

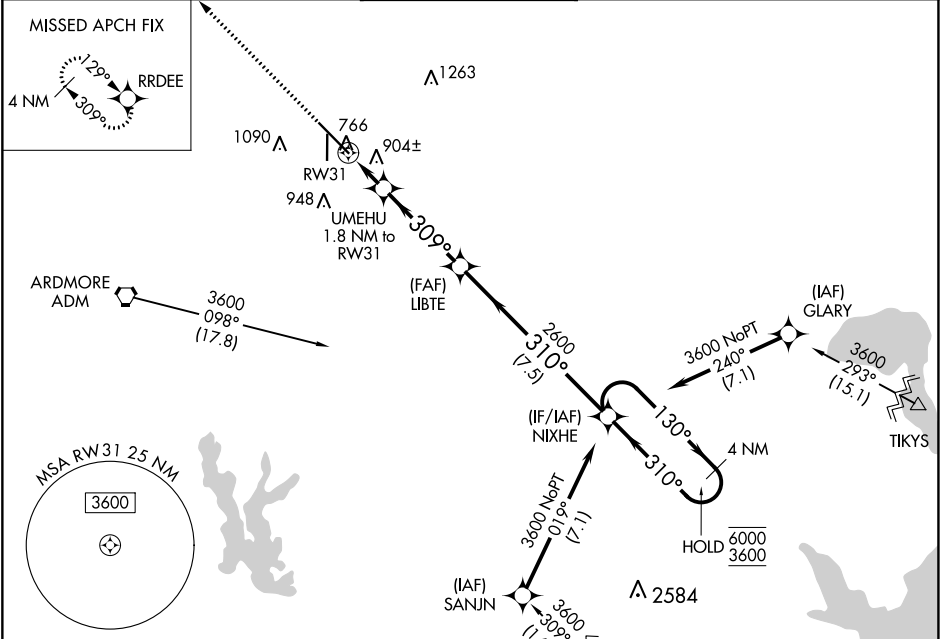
WAAS CH 69625 W31A	APP CRS 309°	Rwy Idg 9002 TDZE 733 Apt Elev 777
--	------------------------	---

RNAV (GPS) RWY 31

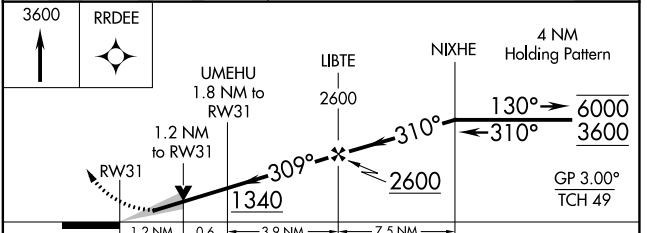
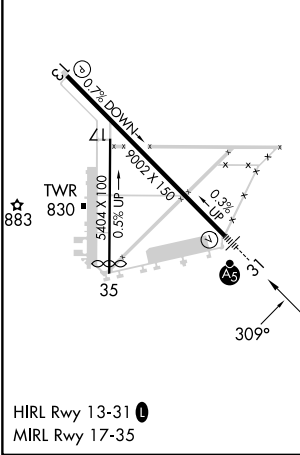
ARDMORE MUNI (ADM)

RNP APCH - GPS.		MALS R	MISSED APPROACH: Climb to 3600 direct RRDEE and hold.	
<p>⚠ For uncompensated Baro-VNAV systems, LNAV/VNAV NA below -16°C or above 54°C. Inop table does not apply to LPV all Cats. For inop ALS, increase LNAV/VNAV all Cats and LNAV Cats C and D visibility to 1½ SM.</p>				

ATIS 125.6	FORT WORTH CENTER 124.75 323.0	ARDMORE TOWER ★ 118.5 (CTAF) 0 257.7	GND CON 121.8	UNICOM 122.95
----------------------	--	--	-------------------------	-------------------------



ELEV 777	D	TDZE 733
----------	----------	----------



CATEGORY	A	B	C	D
LPV DA		933-½	200 (200-½)	
LNAV/VNAV DA		1200-1	467 (500-1)	
LNAV MDA	1160-½	427 (400-½)	1160-¾	427 (400-¾)
CIRCLING	1300-1 523 (600-1)	1440-1 663 (700-1)	1500-2 723 (800-2)	1700-3 923 (1000-3)

SC-1, 11 JUL 2024 to 08 AUG 2024

SC-1, 11 JUL 2024 to 08 AUG 2024