

LOC I-LJU 108.5	APP CRS 245°	Rwy Idg 11800
		TDZE 624
		Apr Elev 633

ILS or LOC RWY 25

OSCODA/WURTSMITH (OSC)

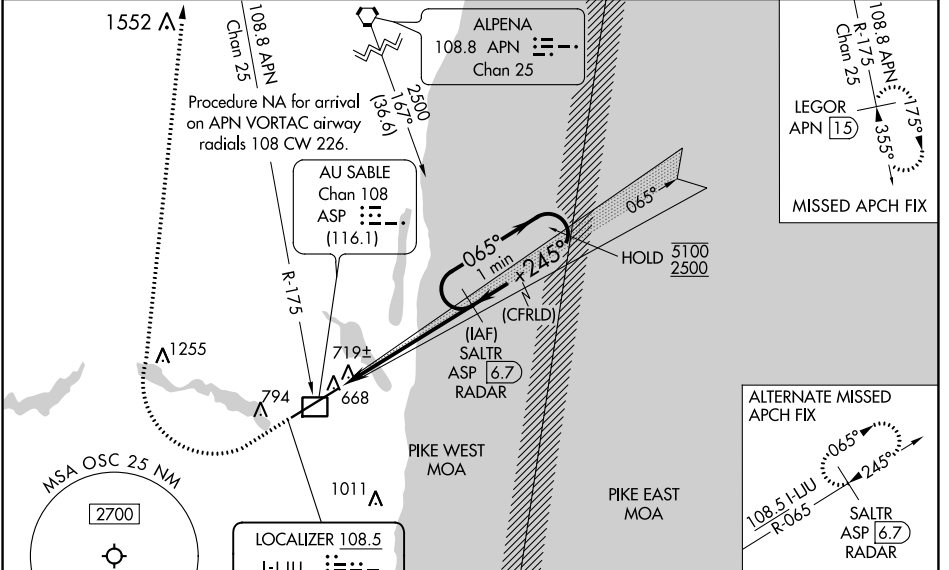
DME required.

NA Circling NA southeast of Rwy 7-25. For inop ALS, increase S-LOC Cats C and D visibility to 1 SM. DME from ASP DME. Simultaneous reception of I-LJU and ASP DME required.

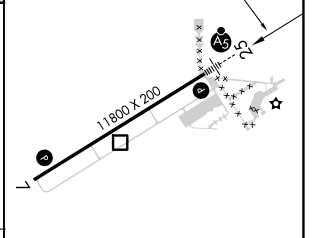
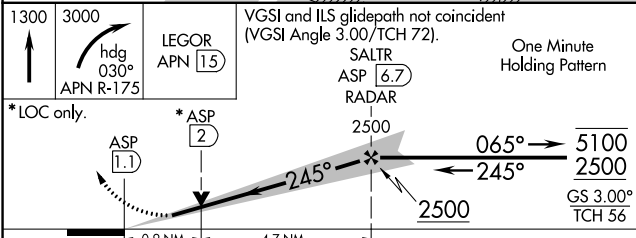
MALSR

MISSED APPROACH: Climb to 1300 then climbing right turn to 3000 on heading 030° and an APN VORTAC R-175 to LEGOR/APN 15 DME and hold.

AWOS-3 118.7	MINNEAPOLIS CENTER 125.475 269.45	UNICOM 123.0 (CTAF)
------------------------	---	-------------------------------



ELEV 633	TDZE 624
----------	----------



CATEGORY	A	B	C	D
S-ILS 25	824-1/2 200 (200-1/2)			
S-LOC 25	980-1/2 356 (400-1/2)		980-5/8 356 (400-5/8)	
C CIRCLING	1140-1 507 (600-1)		1160-1 1/2 667 (700-2)	

REIL Rwy 7 Δ

HIRL Rwy 7-25 Δ

EC-1, 11 JUL 2024 to 08 AUG 2024

EC-1, 11 JUL 2024 to 08 AUG 2024