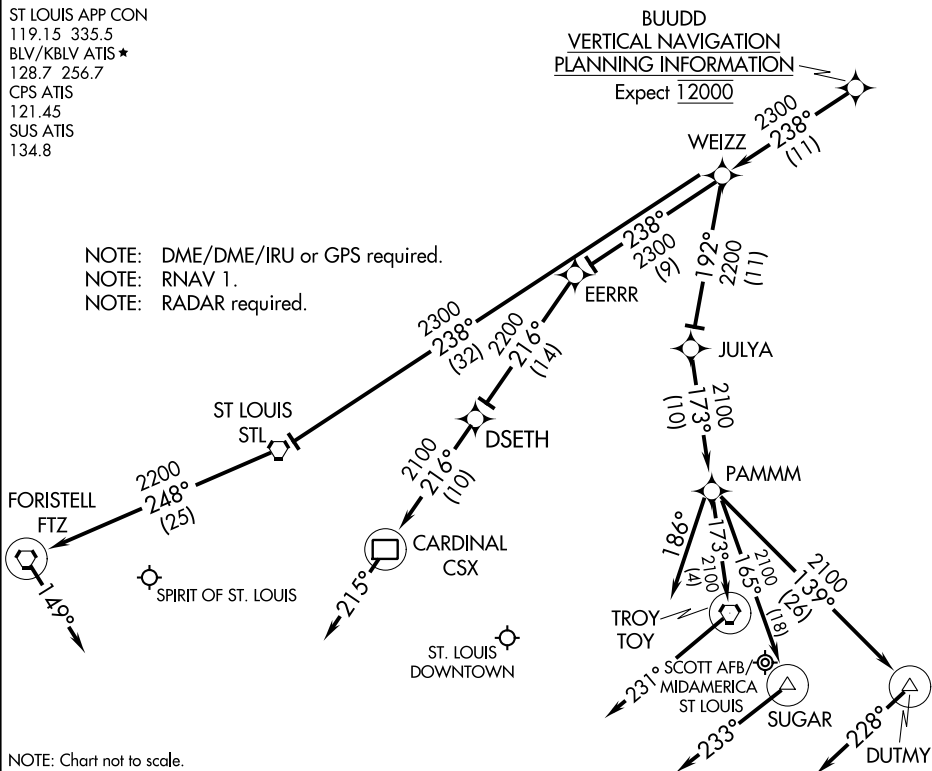


ST LOUIS APP CON
119.15 335.5
BLV/KBLV ATIS ★
128.7 256.7
CPS ATIS
121.45
SUS ATIS
134.8

BUUDD
VERTICAL NAVIGATION
PLANNING INFORMATION

Expect 12000

- NOTE: DME/DME/IRU or GPS required.
- NOTE: RNAV 1.
- NOTE: RADAR required.



NOTE: Chart not to scale.

ARRIVAL ROUTE DESCRIPTION

SPIRIT OF ST. LOUIS:

LANDING RUNWAYS 8L/R: From BUUDD on track 238° to WEIZZ, then on track 238° to STL VORTAC, then on track 248° to FTZ VORTAC. Expect RADAR vectors prior to FTZ VORTAC, if no heading received, track 149°.

LANDING RUNWAYS 26L/R: From BUUDD on track 238° to WEIZZ, then on track 238° to EERRR, then on track 216° to DSETH, then on track 216° to CSX DME. Expect RADAR vectors prior to CSX DME, if no heading received, track 215°.

ST. LOUIS DOWNTOWN:

LANDING RUNWAY 12R: From BUUDD on track 238° to WEIZZ, then on track 192° to JULYA, then on track 173° to PAMMM. Expect RADAR vectors prior to PAMMM, if no heading received, track 186°.

LANDING RUNWAYS 30L/R: From BUUDD on track 238° to WEIZZ, then on track 192° to JULYA, then on track 173° to PAMMM, then on track 165° to SUGAR. Expect RADAR vectors prior to SUGAR, if no heading received, track 233°.

SCOTT AFB/MIDAMERICA ST LOUIS:

LANDING RUNWAYS 14L/R: From BUUDD on track 238° to WEIZZ, then on track 192° to JULYA, then on track 173° to PAMMM, then on track 173° to TOY VORTAC. Expect RADAR vectors prior to TOY VORTAC, if no heading received, track 231°.

LANDING RUNWAYS 32L/R: From BUUDD on track 238° to WEIZZ, then on track 192° to JULYA, then on track 173° to PAMMM, then on track 139° to DUTMY. Expect RADAR vectors prior to DUTMY, if no heading received, track 228°.