

GATEWAY ONE DEPARTURE  
(GATWY1.TWILA) 08NOV18

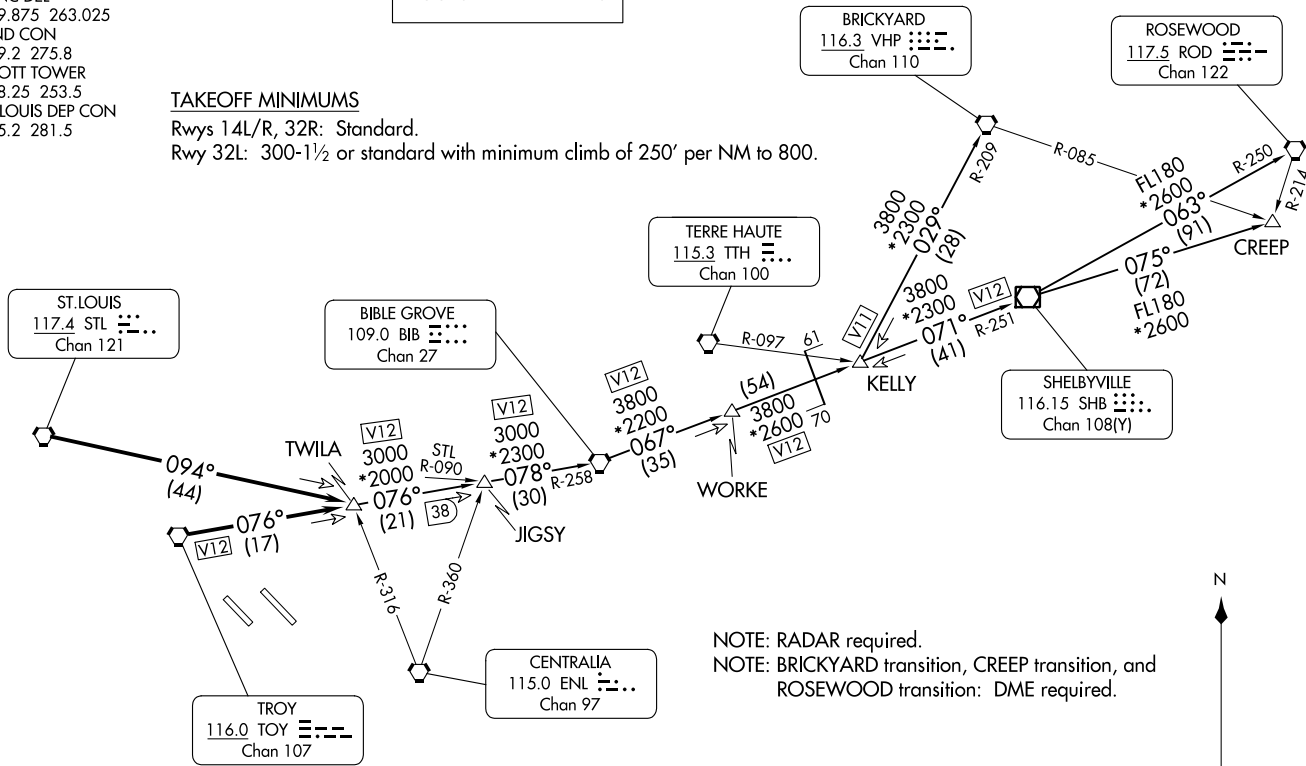
SCOTT AFB/MIDAMERICA ST LOUIS (B.L.V)  
BELEVILLE, ILLINOIS

ATIS ★  
128.7 256.7  
CLNC DEL  
119.875 263.025  
GND CON  
119.2 275.8  
SCOTT TOWER  
128.25 253.5  
ST LOUIS DEP CON  
125.2 281.5

**TOP ALTITUDE:  
ASSIGNED BY ATC**

TAKEOFF MINIMUMS

Rwys 14L/R, 32R: Standard.  
Rwy 32L: 300-1½ or standard with minimum climb of 250' per NM to 800.



NOTE: RADAR required.  
NOTE: BRICKYARD transition, CREEP transition, and ROSEWOOD transition: DME required.



NOTE: Chart not to scale.

(CONTINUED ON FOLLOWING PAGE)

(GATWY1.TWILA) 23334  
GATEWAY ONE DEPARTURE

AL-46 (FAA)

SCOTT AFB/MIDAMERICA ST LOUIS (B.L.V)  
BELEVILLE, ILLINOIS



DEPARTURE ROUTE DESCRIPTION

Climb on assigned heading for vector to appropriate route, maintain 3000 or assigned altitude, thence. . . .

. . . .from over TOY VORTAC on TOY R-076 or over STL VORTAC on STL R-094 to TWILA INT. Then on (transition), expect clearance to filed altitude 10 minutes after departure.

BIBLE GROVE TRANSITION (GATWY1.BIB): From over TWILA on TOY R-076 to JIGSY, then on BIB R-258 to BIB VORTAC.

BRICKYARD TRANSITION (GATWY1.VHP): From over TWILA on TOY R-076 to JIGSY, then on BIB R-258 to BIB VORTAC, then on BIB R-067 to WORKE, then on BIB R-067 and SHB R-251 to KELLY, then on VHP R-209 to VHP VORTAC.

CREEP TRANSITION (GATWY1.CREEP): From over TWILA on TOY R-076 to JIGSY, then on BIB R-258 to BIB VORTAC, then on BIB R-067 to WORKE, then on BIB R-067 and SHB R-251 to KELLY, then on SHB R-251 to SHB VOR/DME, then on SHB R-075 to CREEP.

JIGSY TRANSITION (GATWY1.JIGSY): From over TWILA on TOY R-076 to JIGSY.

ROSEWOOD TRANSITION (GATWY1.ROD): From over TWILA on TOY R-076 to JIGSY, then on BIB R-258 to BIB VORTAC, then on BIB R-067 to WORKE, then on BIB R-067 and SHB R-251 to KELLY, then on SHB R-251 to SHB VOR/DME, then on SHB R-063 and ROD R-250 to ROD VORTAC.

EC-3, 11 JUL 2024 to 08 AUG 2024

EC-3, 11 JUL 2024 to 08 AUG 2024