

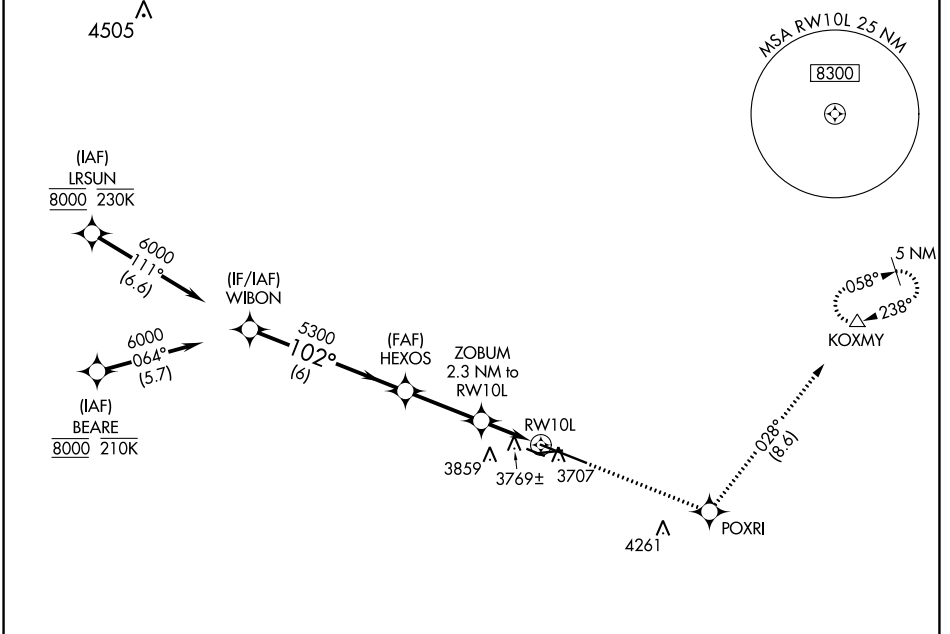
WAAS CH <b>50122</b> W10A	APP CRS <b>102°</b>	Rwy Idg <b>10518</b> TDZE <b>3585</b> Apt Elev <b>3662</b>
---------------------------------	------------------------	--

# RNAV (GPS) RWY 10L

BILLINGS LOGAN INTL (BIL)

RNP APCH - GPS	MALSRL	MISSED APPROACH: Climb to 6000 direct POXR1 and on track 028° to KOXMY and hold.
<p>For uncompensated Baro-VNAV systems, LNAV/VNAV NA below -24°C or above 50°C. #RVR 1800 authorized with use of FD or AP or HUD to DA.</p>		

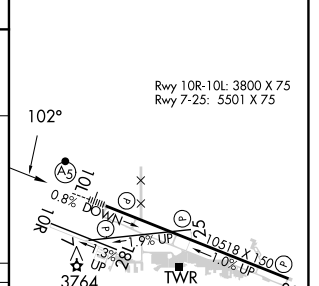
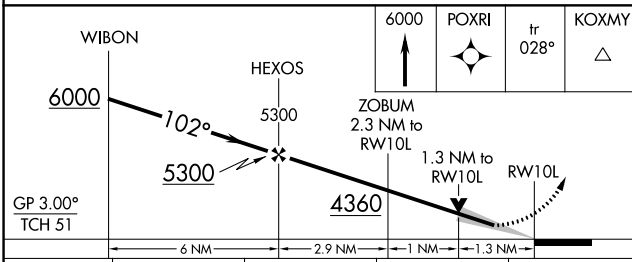
ATIS <b>126.3</b>	BILLINGS APP CON <b>120.5 284.6</b>	BILLINGS TOWER <b>127.2 257.8</b>	GND CON <b>121.9</b>	CLNC DEL <b>121.9</b>
----------------------	--	--------------------------------------	-------------------------	--------------------------



NW-1, 11 JUL 2024 to 08 AUG 2024

NW-1, 11 JUL 2024 to 08 AUG 2024

ELEV 3662	<b>D</b> TDZE 3585
-----------	--------------------



CATEGORY	A	B	C	D
LPV DA#	3785/24		200 (200-½)	
LNAV/VNAV DA	4041/45		456 (400-¾)	
LNAV MDA	4020/24 435 (400-½)		4020/40 435 (400-¾)	
<b>C</b> CIRCLING	4160-1 498 (500-1)		4180-1½ 518 (600-1½) 4580-3 918 (1000-3)	

REIL Rwy 25 and 28R  
HIRL Rwy 10L-28R  
MIRL Rwy 7-25 and 10R-28L