

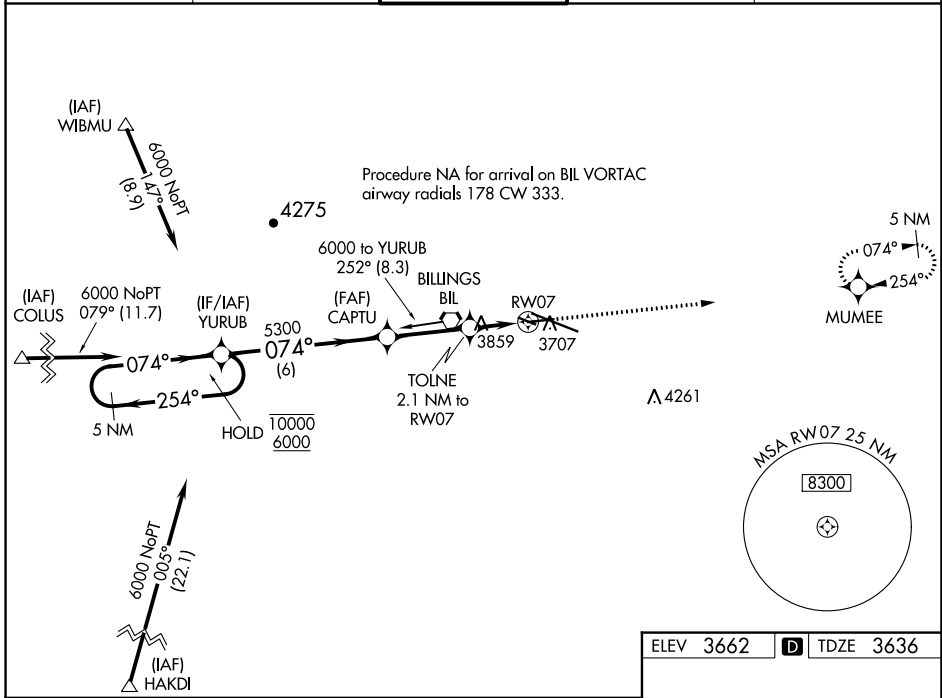
WAAS CH <b>87127</b> <b>W07A</b>	APP CRS <b>074°</b>	Rwy Idg TDZE Apt Elev	<b>5501</b> <b>3636</b> <b>3662</b>
--	------------------------	-----------------------------	---

# RNAV (GPS) RWY 7

BILLINGS LOGAN INTL (BIL)

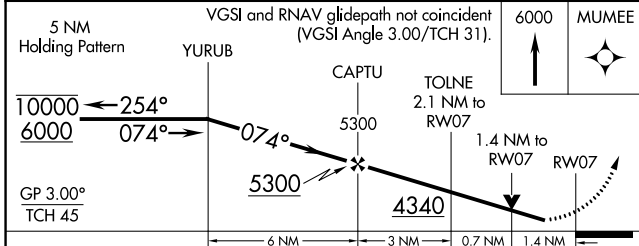
RNP APCH - GPS		<p><b>▼</b> Rwy 7 helicopter visibility reduction below 3/4 SM NA.  <b>▲</b> For uncompensated Baro-VNAV systems, LNAV/VNAV NA below -25°C or above 53°C.</p>		<p>MISSED APPROACH: Climb to 6000 direct MUMEE and hold.</p>	
----------------	--	---	--	--	--

ATIS <b>126.3</b>	BILLINGS APP CON <b>120.5 284.6</b>	<b>BILLINGS TOWER</b> <b>127.2 257.8</b>	GND CON <b>121.9</b>	CINC DEL <b>121.9</b>
----------------------	--	---	-------------------------	--------------------------

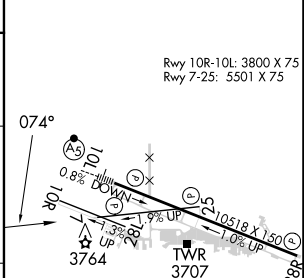


NW-1, 11 JUL 2024 to 08 AUG 2024

NW-1, 11 JUL 2024 to 08 AUG 2024



ELEV 3662	<b>D</b> TDZE 3636
-----------	--------------------



CATEGORY	A	B	C	D
LPV DA	3886-3/4		250 (300-3/4)	
LNAV/VNAV DA	3950-7/8		314 (300-7/8)	
LNAV MDA	4120-1	484 (500-1)	4120-1 3/8	484 (500-1 3/8)
<b>C</b> CIRCLING	4160-1	498 (500-1)	4180-1 1/2 518 (600-1 1/2)	4580-3 918 (1000-3)

