

APP CRS	Rwy Idg	10518
282°	TDZE	3517
	Apt Elev	3662

RNAV (RNP) Z RWY 28R

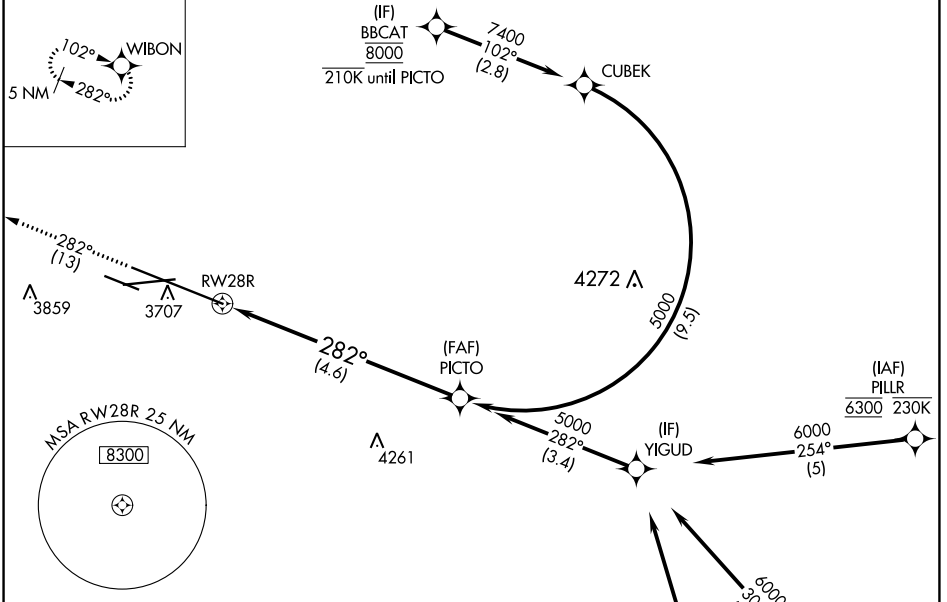
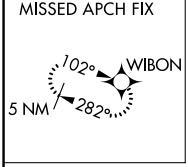
BILLINGS LOGAN INTL (BIL)

RNP AR APCH-GPS

▼ For uncompensated Baro-VNAV systems, procedure NA below -24°C or above 50°C.

MISSED APPROACH: Climb to 5900 on track 282° to WIBON and hold.

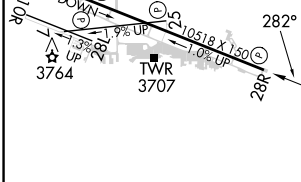
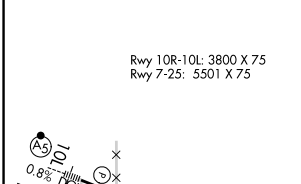
ATIS 126.3	BILLINGS APP CON 120.5 284.6	BILLINGS TOWER 127.2 257.8	GND CON 121.9	CLNC DEL 121.9
----------------------	----------------------------------------	--------------------------------------	-------------------------	--------------------------



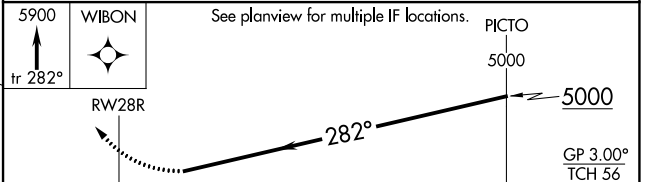
NW-1, 11 JUL 2024 to 08 AUG 2024

NW-1, 11 JUL 2024 to 08 AUG 2024

ELEV 3662 **D** TDZE 3517



REIL Rwy 25 and 28R	HIRL Rwy 10L-28R	MIRL Rwy 7-25 and 10R-28L
---------------------	------------------	---------------------------



CATEGORY	A	B	C	D
RNP 0.30 DA	3903-1¼		386 (300-1¼)	

AUTHORIZATION REQUIRED