

WAAS CH 56222 RW28A	APP CRS 282°	Rwy Idg 10518 TDZE 3517 Apt Elev 3662
----------------------------------	------------------------	--

RNAV (GPS) Y RWY 28R

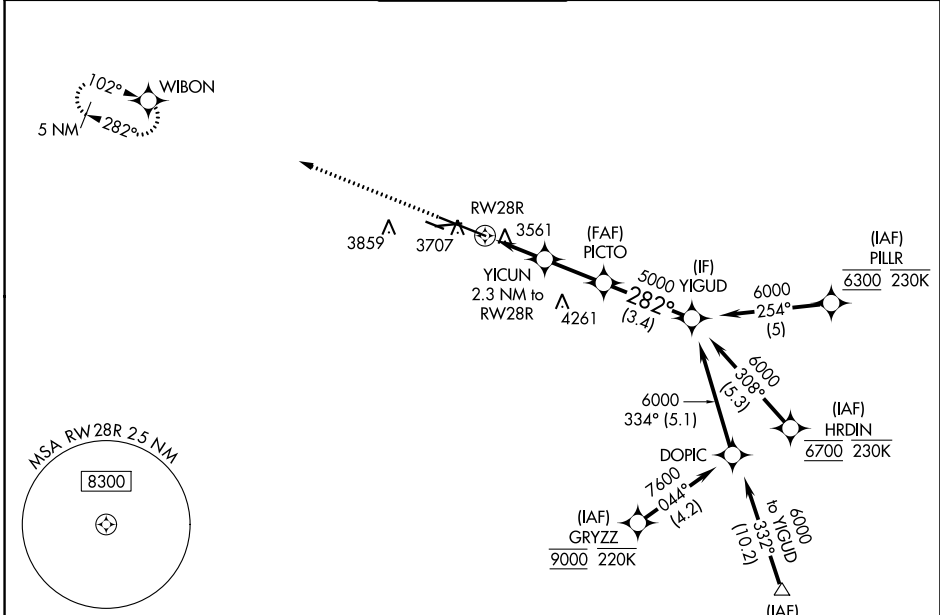
BILLINGS LOGAN INTL (BIL)

RNP APCH - GPS.

⚠ For uncompensated Baro-VNAV systems, LNAV/VNAV NA below -24°C or above 50°C.

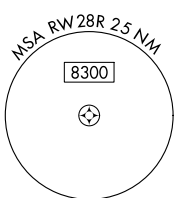
MISSED APPROACH: Climb to 5900 direct WIBON and hold.

ATIS 126.3	BILLINGS APP CON 120.5 284.6	BILLINGS TOWER 127.2 257.8	GND CON 121.9	CLNC DEL 121.9
----------------------	--	--------------------------------------	-------------------------	--------------------------

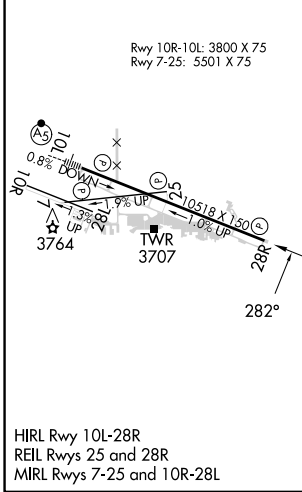


NW-1, 11 JUL 2024 to 08 AUG 2024

NW-1, 11 JUL 2024 to 08 AUG 2024



ELEV 3662	D	TDZE 3517
-----------	----------	-----------



<p>⚠ 5155</p> <p>5900 WIBON</p> <p>YICUN 2.3 NM to RWY 28R</p> <p>PICTO 5000</p> <p>YIGUD 6000</p> <p>RWY 28R 3764</p> <p>0.9 NM to RWY 28R</p> <p>4260</p> <p>5000</p> <p>6000</p> <p>GP 3.00° TCH 56</p>				
CATEGORY	A	B	C	D
LPV DA		3767- ³ / ₄	250 (200- ³ / ₄)	
LNAV/VNAV DA		3786- ⁷ / ₈	269 (200- ⁷ / ₈)	
LNAV MDA		3820-1	303 (200-1)	
C CIRCLING	4160-1	498 (500-1)	4180-1 ¹ / ₂ 518 (600-1 ¹ / ₂)	4580-3 918 (1000-3)