

BILOXI, MISSISSIPPI

# RNAV (GPS) RWY 4

APCH CRS	Rwy ldg	6030
037°	TDZE	23
	Arprt Elev	33

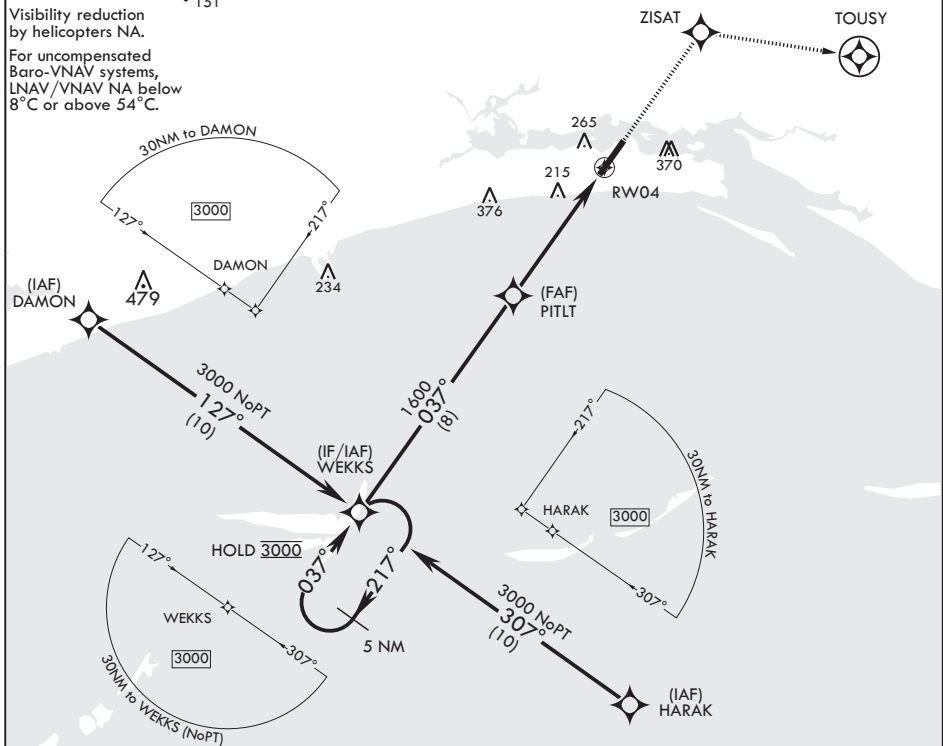
AL-49 (USAF)

KEESLER AFB (KBIX)

RNP APCH MISSED APPROACH: Climb to 2100 direct ZISAT and track 101° to TOUSY. Expect ATC instructions.

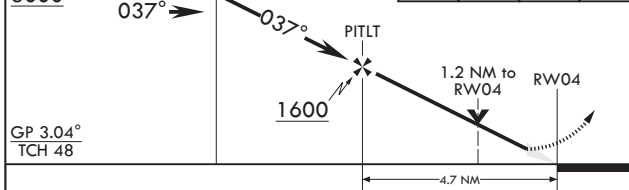
ATIS <b>281.55</b>	GULFPORT APP CON/DEP CON <b>124.6 354.1 130° - 309°</b> <b>127.5 254.25 310° - 129°</b>	TOWER* <b>120.75 269.075</b>	GND CON <b>121.8 275.8</b>	CLNC DEL <b>121.8 275.8</b>
-----------------------	---	---------------------------------	-------------------------------	--------------------------------

\* 151  
 Visibility reduction by helicopters NA.  
 For uncompensated Baro-VNAV systems, LNAV/VNAV NA below 8°C or above 54°C.

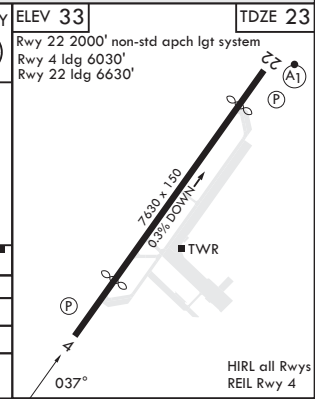


EMERG SAFE ALT 100 NM 3100

5 NM Holding Pattern	2100	ZISAT	TOUSY	ELEV 33	TDZE 23
3000 ← 217°	↑	✧	tr 101°	Rwy 22 2000' non-std apch lgt system	
→ 037°				Rwy 4 ldg 6030'	
				Rwy 22 ldg 6630'	



CATEGORY	A		B		C		D	
LNAV/VNAV DA	391/55		368		(400-1)			
LNAV MDA	460/55	437 (500-1)	460-1¼	437 (500-1¼)				
CR CIRCLING	580-1 547 (600-1)	660-1 627 (700-1)	680-1¼ 647 (700-1¼)	680-2 647 (700-2)				



BILOXI, MISSISSIPPI  
Amdt 2 07SEP23

30°25'N - 88°55'W

KEESLER AFB (KBIX)

# RNAV (GPS) RWY 4

SC-4, 11 JUL 2024 to 08 AUG 2024

SC-4, 11 JUL 2024 to 08 AUG 2024