

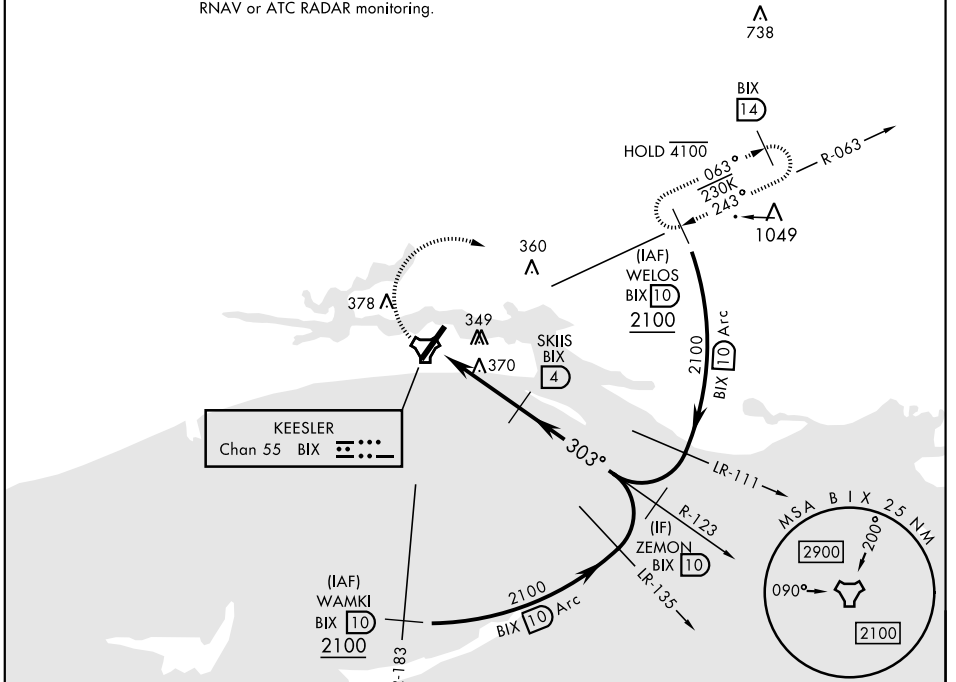
# TACAN-A

TACAN BIX Chan <b>55</b>	APCH CRS <b>303°</b>	Rwy ldg THRE Arprt Elev <b>N/A</b> <b>N/A</b> <b>33</b>	AL-49 [USAF]	KEESLER AFB (KBIX)
-----------------------------	-------------------------	--	--------------	--------------------

† MISSED APPROACH: Climb tracking 303° to BIX TACAN then right turn to intercept BIX R-063 climbing to 2100 to 10 DME (WELOS) and hold.

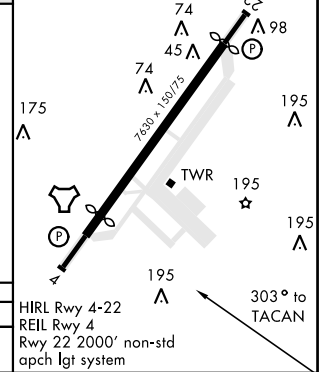
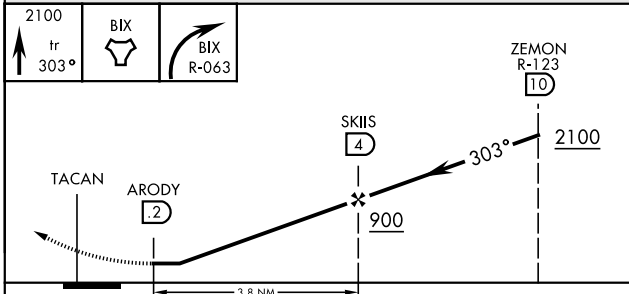
ATIS <b>281.55</b>	GULFPORT APP CON <b>124.6 354.1</b> (130°- 309°) <b>127.5 254.25</b> (310°- 129°)	KEESLER TOWER ★ <b>120.75 269.075</b>	GND CON <b>121.8 275.8</b>	CLNC DEL <b>121.8 275.8</b>
-----------------------	---	--	-------------------------------	--------------------------------

† Missed approach requires use of RNAV or ATC RADAR monitoring.



EMERG SAFE ALT 100 NM 3100

ELEV 33  
Rwy 4 ldg 6030'  
Rwy 22 ldg 6630'



CATEGORY	A	B	C	D
☐ CIRCLING	620-1 587 (600-1)	660-1 627 (700-1)	680-1 3/4 647 (700-1 3/4)	680-2 647 (700-2)

HIRL Rwy 4-22  
REIL Rwy 4  
Rwy 22 2000' non-std  
apch lgt system

# TACAN-A

SC-4, 11 JUL 2024 to 08 AUG 2024

SC-4, 11 JUL 2024 to 08 AUG 2024