

BILOXI, MISSISSIPPI

TACAN-B

VORTAC GPT 109.0 Chan 27	APCH CRS 266°	Rwy ldg TDZE Arpt Elev N/A N/A 33
--	-------------------------	---

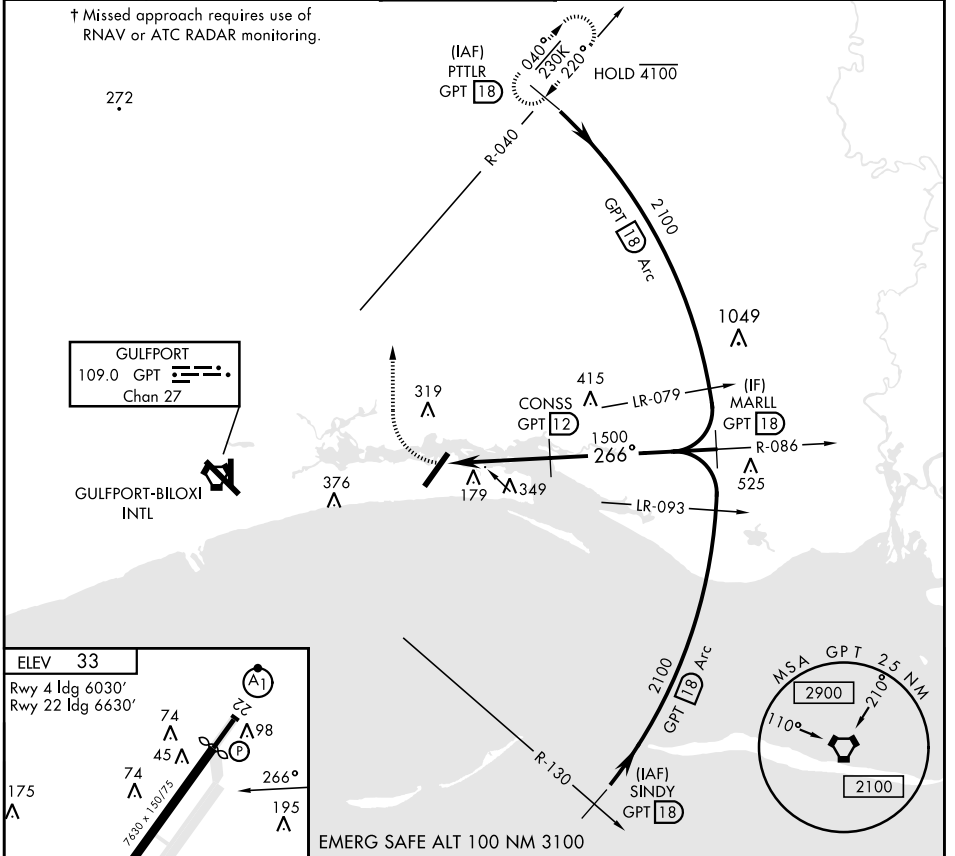
AL-49 [USAF]

KEESLER AFB (KBIX)

† MISSED APPROACH: Climbing right turn to 2300 intcp GPT VORTAC R-040 to PTTLR (R-040/18 DME) and hold.

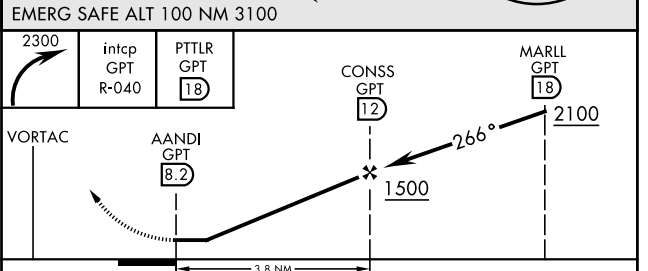
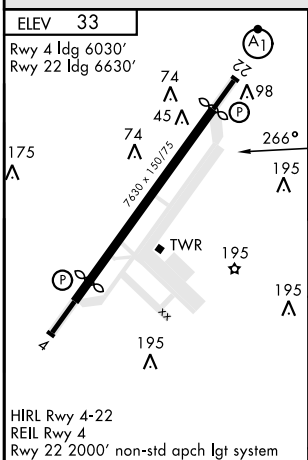
ATIS 281.55	GULFPORT APP CON 124.6 354.1 (130°-309°) 127.5 254.25 (310°-129°)	TOWER ★ 120.75 269.075	GND CON 121.8 275.8	CLNC DEL 121.8 275.8
-----------------------	---	----------------------------------	-------------------------------	--------------------------------

† Missed approach requires use of RNAV or ATC RADAR monitoring.



GULFPORT
109.0 GPT
Chan 27

GULFPORT-BILOXI INTL



FAF to MAP 3.8 NM					CATEGORY			
Knots	60	90	120	150	A	B	C	D
Min:Sec	3:48	2:32	1:54	1:31	620-1 587 (600-1)	660-1 627 (700-1)	680-1¾ 647 (700-1¾)	680-2 647 (700-2)

BILOXI, MISSISSIPPI

30° 25' N-88° 55' W

KEESLER AFB (KBIX)

Amdt 3 03NOV22

TACAN-B

SC-4, 11 JUL 2024 to 08 AUG 2024

SC-4, 11 JUL 2024 to 08 AUG 2024