

HI-ILS Z or LOC Z RWY 10R

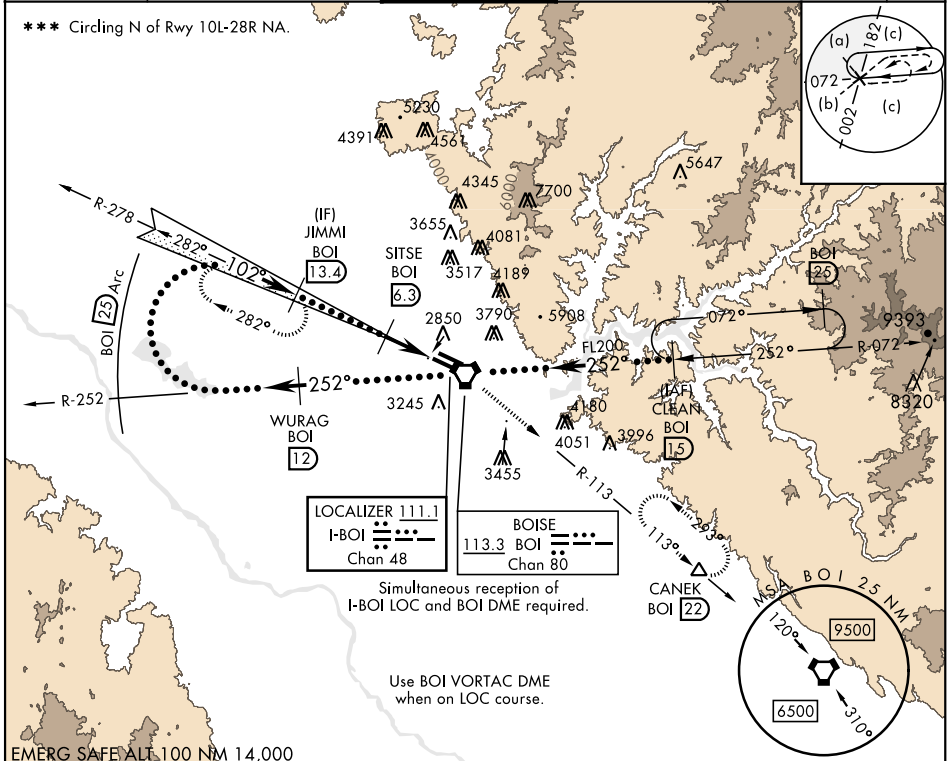
LOC I-BOI 111.1	APCH CRS 102°	Rwy Idg TDZE Arpt Elev 9763 2836 2872	AL-57 [USAF]	BOISE AIR TERMINAL (GOWEN FLD)	(KBOI)
---------------------------	-------------------------	---	--------------	--------------------------------	--------

DME required. **ALSF-2**

*** When ALS inop, increase RVR to 40 and vis to 3/4 mile.
 ** When ALS inop, increase RVR to 55 and vis to 1 mile.

MISSED APPROACH: Climb to 7300 on BOI VORTAC R-113 to CANEK/BOI 22 DME and hold.

ATIS 123.9 290.4	BIG SKY APP CON 119.6 269.4	BOISE TOWER 118.1 257.8	GND CON 121.7 348.6	CLNC DEL 125.9 323.2	ASOS
----------------------------	---------------------------------------	-----------------------------------	-------------------------------	--------------------------------	------



EMERG SAFE ALL 100 NM 14,000

7300	BOI R-113	CANEK	VGSI and ILS glidepath not coincident (VGSI Angle 3.00/TCH 64).			ELEV 2872	TDZE 2836																
Right at 12,000 remain within 25 NM of BOI VORTAC	WURAG BOI 12	VORTAC	CLEAN BOI 15																				
GS 3.00° TCH 54	JIMMI BOI 13.4	FL200	SITSE BOI 6.3	BOI 3.4	AVVVU BOI 2.7	<table border="1"> <tr> <td>CATEGORY</td> <td>C</td> <td>D</td> <td>E</td> </tr> <tr> <td>S-ILS 10R **</td> <td>3036/18</td> <td>200</td> <td>(200-1/2)</td> </tr> <tr> <td>S-LOC 10R **</td> <td>3200/35</td> <td>364</td> <td>(400-3/8)</td> </tr> <tr> <td>***</td> <td>3640-2 1/4 768 (800-2 1/4)</td> <td>3820-3 948 (1000-3)</td> <td>3880-3 1008 (1100-3)</td> </tr> </table>		CATEGORY	C	D	E	S-ILS 10R **	3036/18	200	(200-1/2)	S-LOC 10R **	3200/35	364	(400-3/8)	***	3640-2 1/4 768 (800-2 1/4)	3820-3 948 (1000-3)	3880-3 1008 (1100-3)
CATEGORY	C	D	E																				
S-ILS 10R **	3036/18	200	(200-1/2)																				
S-LOC 10R **	3200/35	364	(400-3/8)																				
***	3640-2 1/4 768 (800-2 1/4)	3820-3 948 (1000-3)	3880-3 1008 (1100-3)																				
C CIRCLING	640-2 1/4 768 (800-2 1/4)	3820-3 948 (1000-3)	3880-3 1008 (1100-3)	TDZL/CL Rwy 10R-28L HIRL Rwys 10L-28R, 10R-28L REIL Rwy 10L																			

BOISE, IDAHO 43°34'N-116°13'W BOISE AIR TERMINAL (GOWEN FLD) (KBOI)

HI-ILS Z or LOC Z RWY 10R

NW-1, 11 JUL 2024 to 08 AUG 2024

NW-1, 11 JUL 2024 to 08 AUG 2024