

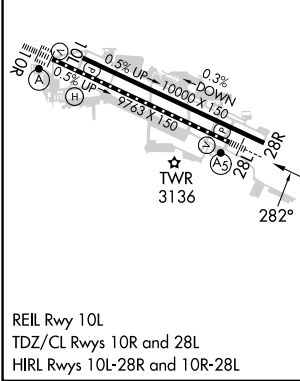
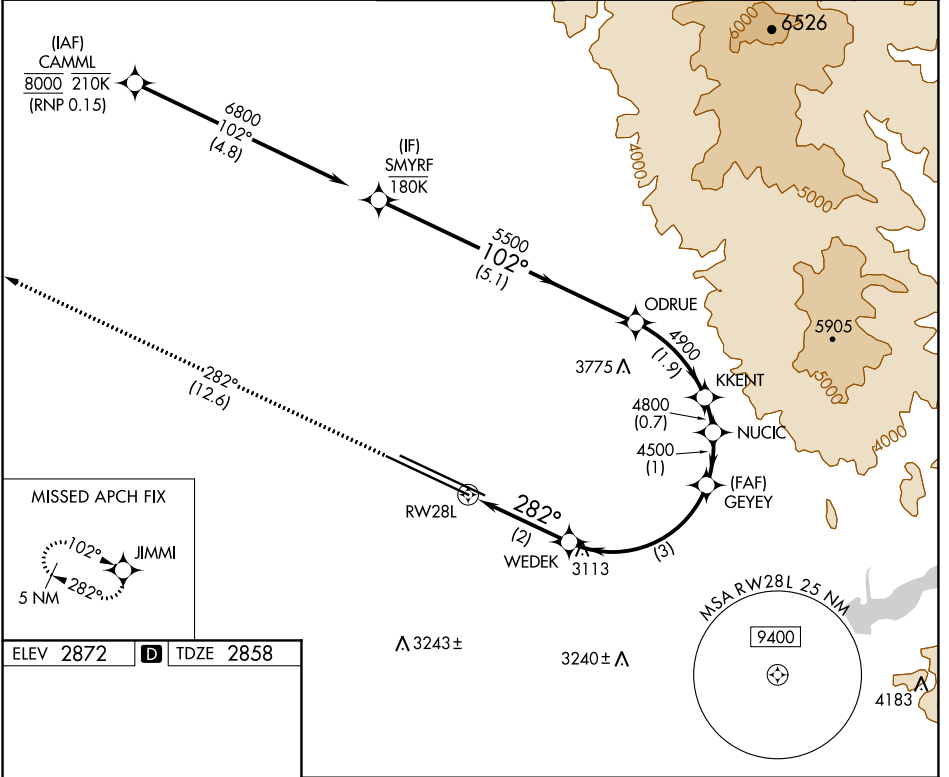
APP CRS	Rwy Idg	<b>9763</b>
<b>282°</b>	TDZE	<b>2858</b>
	Apt Elev	<b>2872</b>

# RNAV (RNP) X RWY 28L

BOISE AIR TRML/GOWEN FLD (BOI)

RNP AR APCH - GPS.	MALSR	MISSED APPROACH: Climb to 6000 on track 282° to JIMMI and hold, continue climb-in-hold to 6000.
For uncompensated Baro-VNAV systems, procedure NA below -14°C or above 54°C.		

D-ATIS <b>123.9 290.4</b>	BIG SKY APP CON <b>119.6 269.4</b>	<b>BOISE TOWER</b> <b>118.1 257.8</b>	GND CON <b>121.7 348.6</b>	CLNC DEL <b>125.9 323.2</b>
------------------------------	---------------------------------------	------------------------------------------	-------------------------------	--------------------------------



6000	JIMMI	VGSI and RNAV glidepath not coincident (VGSI Angle 3.00/TCH 50).				SMYRF	
tr 282°		WEDEK	GEYEE	NUCIC	ODRUE	6800	
		3545	4500	4800	4900	5500	
		2 NM	3 NM	1 NM	0.7 NM	1.9 NM	5.1 NM
RWY28L						GP 3.00° TCH 50	

CATEGORY	A	B	C	D
RNP 0.15 DA	3229/35 371 (400- <sup>2</sup> / <sub>3</sub> )			
<b>AUTHORIZATION REQUIRED</b>				

NW-1, 11 JUL 2024 to 08 AUG 2024

NW-1, 11 JUL 2024 to 08 AUG 2024