

APP CRS	Rwy Idg	10000
282°	TDZE	2871
	Apt Elev	2871

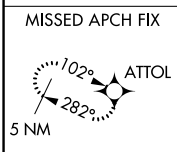
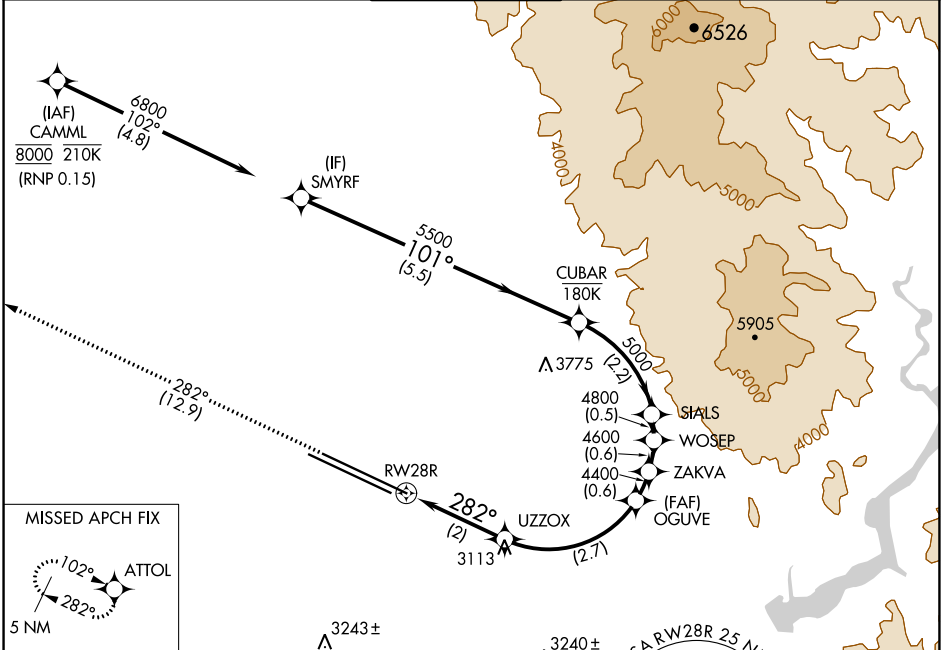
RNAV (RNP) X RWY 28R

BOISE AIR TRML/GOWEN FLD (BOI)

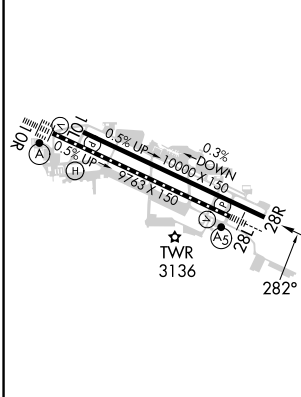
NA For uncompensated Baro-VNAV systems, procedure NA below -1.4°C (7°F) or above 52°C (126°F). RF required. GPS required.

MISSED APPROACH: Climb to 6000 on track 282° to ATTOL and hold.

D-ATIS	BIG SKY APP CON	BOISE TOWER	GND CON	CLNC DEL
123.9 290.4	119.6 269.4	118.1 257.8	121.7 348.6	125.9 323.2



ELEV	2871	D	TDZE	2871
------	-------------	----------	------	-------------



6000	ATTOL	VGSI and RNAV glidepath not coincident (VGSI Angle 3.00/TCH 70).	3560	3669	SMYRF	6800
tr 282°	OGUVE	ZAKVA	WOSEP	SIALS	CUBAR	
	3548	4400	4600	4800	5000	5500
	RW28R	3548	4400	4600	4800	5000
			4400			
						GP 3.00°
						TCH 55
CATEGORY	A	B	C	D		
RNP 0.15 DA	3288-1 ³ / ₈		417 (500-1 ³ / ₈)			

REIL Rwy 10L
 TDZ/CL Rwy 10R and 28L
 HIRL Rwy 10L-28R and 10R-28L

AUTHORIZATION REQUIRED

NW-1, 11 JUL 2024 to 08 AUG 2024

NW-1, 11 JUL 2024 to 08 AUG 2024