

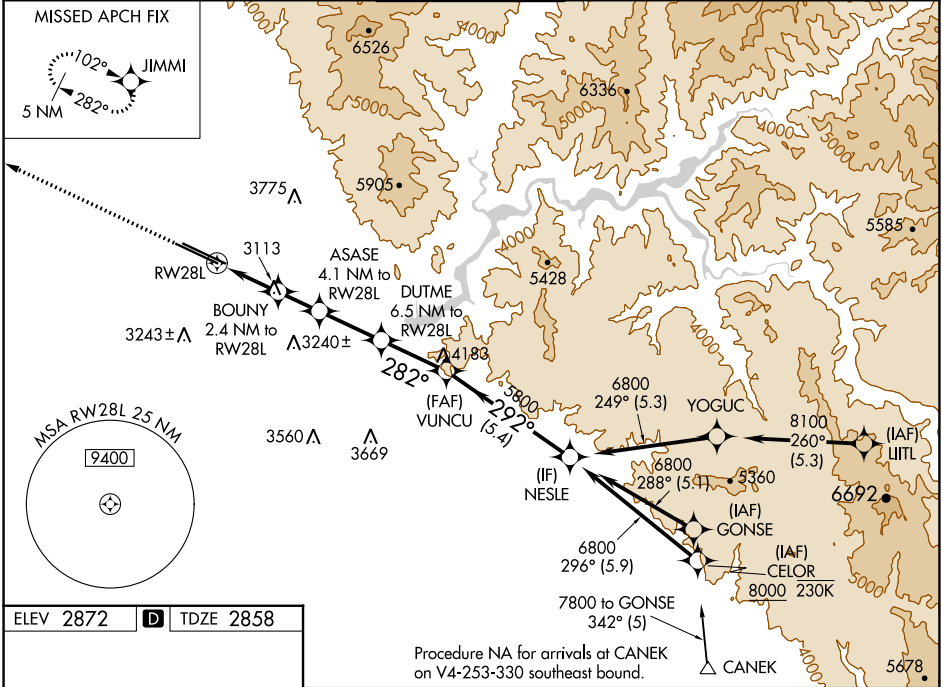
WAAS CH 7702 W28A	APP CRS 282°	Rwy Idg TDZE Apt Elev	9763 2858 2872
---------------------------------------	------------------------	-----------------------------	---

RNAV (GPS) Y RWY 28L

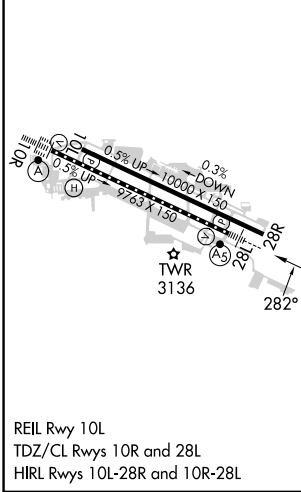
BOISE AIR TRML/GOWEN FLD (BOI)

RNP APCH - GPS.	MALSR 	MISSED APPROACH: Climb to 6000 direct JIMMI and hold, continue climb-in-hold to 6000.
Circling NA north of Rwy 10L-28R. For uncompensated Baro-VNAV systems, LNAV/VNAV NA below -1.4°C or above 54°C. For inop ALS, increase LPV all Cats visibility to RVR 4500, and LNAV/VNAV all Cats visibility to RVR 6000.		

D-ATIS 123.9 290.4	BIG SKY APP CON 119.6 269.4	BOISE TOWER 118.1 257.8	GND CON 121.7 348.6	CLNC DEL 125.9 323.2
------------------------------	---------------------------------------	--	-------------------------------	--------------------------------



ELEV 2872	D	TDZE 2858
-----------	----------	-----------



6000	JIMMI	VGSi and RNAV glidepath not coincident (VGSi Angle 3.00/TCH 50).			
		ASASE	DUTME	VUNCU	NESLE
		BOUNY	5800	5800	6800
		1.4 NM to RWY 28L	2.4 NM to RWY 28L	6.5 NM to RWY 28L	GP 3.00° TCH 50
		3680	4200	4980	
		1.4 NM	1 NM	1.6 NM	2.5 NM
		1 NM	1.6 NM	2.5 NM	2.6 NM
		1.6 NM	2.5 NM	2.6 NM	5.4 NM
CATEGORY	A	B	C	D	
LPV DA		3160/24	302 (300-½)		
LNAV/VNAV DA		3267/40	409 (400-¾)		
LNAV MDA	3380/24	522 (600-½)	3380/55	522 (600-1)	
C CIRCLING	3440-1	568 (600-1)	3640-2¼ 768 (800-2¼)	3820-3 948 (1000-3)	

NW-1, 11 JUL 2024 to 08 AUG 2024

NW-1, 11 JUL 2024 to 08 AUG 2024