

REVS SIX DEPARTURE (RNAV)  
(REVSS6, REVSS) 30NOV23

GENERAL EDWARD LAWRENCE LOGAN INTL (BOS)  
BOSTON, MASSACHUSETTS

BOSTON DEP CON  
133.0  
D-ATIS 135.0  
CLNC DEL  
121.65 257.8  
CPDLC  
GND CON  
121.75 121.9  
BOSTON TOWER  
128.8 257.8 (WEST)  
132.225 257.8 (EAST)

TAKEOFF MINIMUMS

Rwy 4L, 14, 15L, 32, 33R: NA - ATC.  
Rwy 4R, 9, 15R, 22R, 33L: Standard with minimum climb of 500'/NM to 520.  
Rwy 22L: 300-1 with minimum climb of 500'/NM to 520, or standard with minimum climb of 500'/NM to 520 if tower reports no tall vessels in the departure area.  
Rwy 27: Standard with minimum climb of 500' per NM to 1300.

RNAV 1 - DME/DME/IRU or GPS.

RADAR required for non-GPS equipped aircraft.

TOP ALTITUDE:  
5000

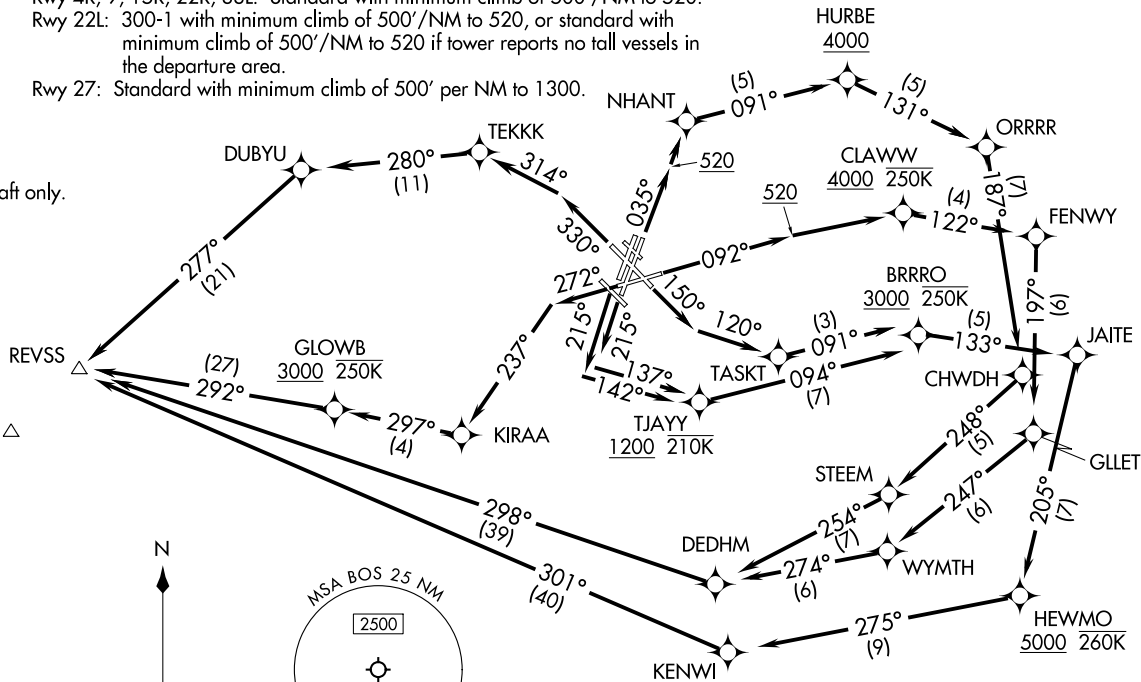
NOTE: Jet aircraft only.

CHESTER CTR

SPENO

BARNES BAF

NELIE



(NARRATIVE ON FOLLOWING PAGE)

(REVSS6, REVSS) 23334  
REVS SIX DEPARTURE (RNAV)

GENERAL EDWARD LAWRENCE LOGAN INTL (BOS)  
AL-58 (FAA)  
BOSTON, MASSACHUSETTS



DEPARTURE ROUTE DESCRIPTION

TAKEOFF RUNWAY 4R: Climb on heading 035° to 520, then direct NHANT, then on track 091° to cross HURBE at or above 4000, thence....

TAKEOFF RUNWAY 9: Climb on heading 092° to 520, then direct CLAWW at or above 4000 and at or below 250K, thence....

TAKEOFF RUNWAY 15R: Climb on heading 150° to intercept course 120° to TASKT, do not exceed 210K until 520' MSL, thence....

TAKEOFF RUNWAY 22L: Climb on heading 215° to intercept course 137° to cross TJAYY at or above 1200 and at or below 210K, thence....

TAKEOFF RUNWAY 22R: Climb on heading 215° to intercept course 142° to cross TJAYY at or above 1200 and at or below 210K, thence....

TAKEOFF RUNWAY 27: Climb on heading 272° to intercept course 237° to KIRAA, thence....

TAKEOFF RUNWAY 33L: Climb on heading 330° to intercept course 314° to TEKKK, thence....

...on depicted route to REVSS. Maintain 5000. Expect filed altitude 10 minutes after departure.

NE-1, 11 JUL 2024 to 08 AUG 2024

NE-1, 11 JUL 2024 to 08 AUG 2024