

JANNY FIVE ARRIVAL (RNAV)

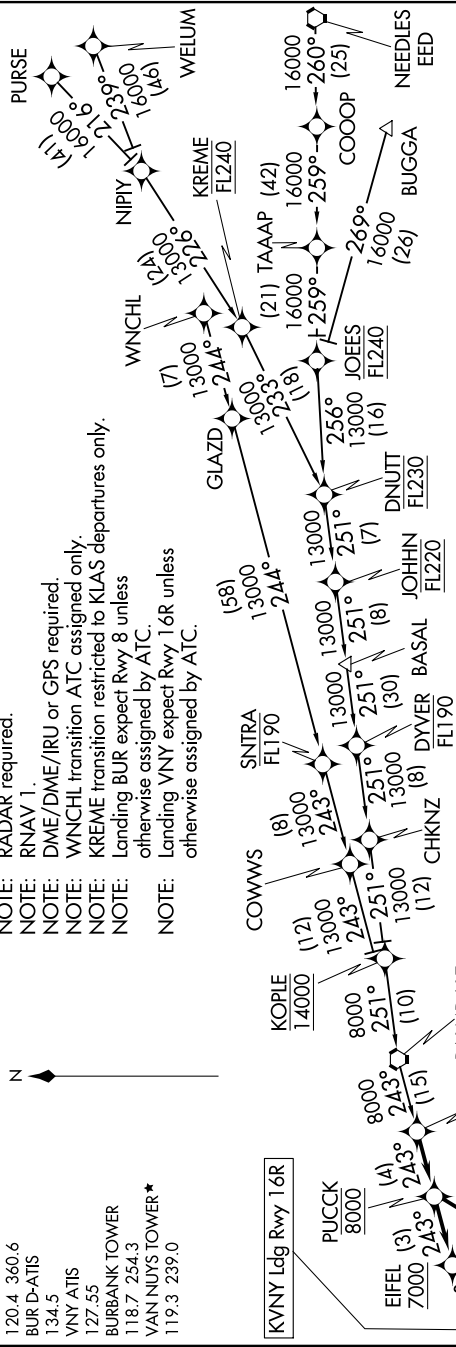
AL-67 (FAA)

BURBANK, CALIFORNIA

SW-3, 11 JUL 2024 to 08 AUG 2024

- SOCAL APP CON
120.4 360.6
- BUR D-ATIS
134.5
- VNY ATIS
127.55
- BURBANK TOWER
118.7 254.3
- VAN NUYS TOWER*
119.3 239.0

- NOTE: RADAR required.
- NOTE: RNAV 1.
- NOTE: DME/DME/IRU or GPS required.
- NOTE: WNCNL transition ATC assigned only.
- NOTE: KREME transition restricted to KLAS departures only.
- NOTE: Landing BUR expect Rwy 8 unless otherwise assigned by ATC.
- NOTE: Landing VNY expect Rwy 16R unless otherwise assigned by ATC.



ARRIVAL ROUTE DESCRIPTION

- BUGGA TRANSITION (BUGGA.JANNY5)
- NEEDLES TRANSITION (EED.JANNY5)
- KREME TRANSITION (KREME.JANNY5)
- PURSE TRANSITION (PURSE.JANNY5)
- WELUM TRANSITION (WELUM.JANNY5)
- WNCNL TRANSITION (WNCNL.JANNY5)

LANDING KBUR RWY 8: From JANNY on track 243° to cross PUCCK at 8000, then on track 201° to cross ELMRR at or above 7000, then on track 201° to cross WABBT at 6000, then on track 201°. Expect RNAV (RNP) Y RWY 8 or RADAR vectors to final approach course.

LANDING KVNY: From JANNY on track 243° to cross PUCCK at 8000, then on track 243° to cross EIFEL at or above 7000, then on track 189° to cross UMBER at or above 6000. Expect ILS Y RWY 16R or ILS Z RWY 16R.

NOTE: Chart not to scale.

JANNY FIVE ARRIVAL (RNAV)

BURBANK, CALIFORNIA

SW-3, 11 JUL 2024 to 08 AUG 2024