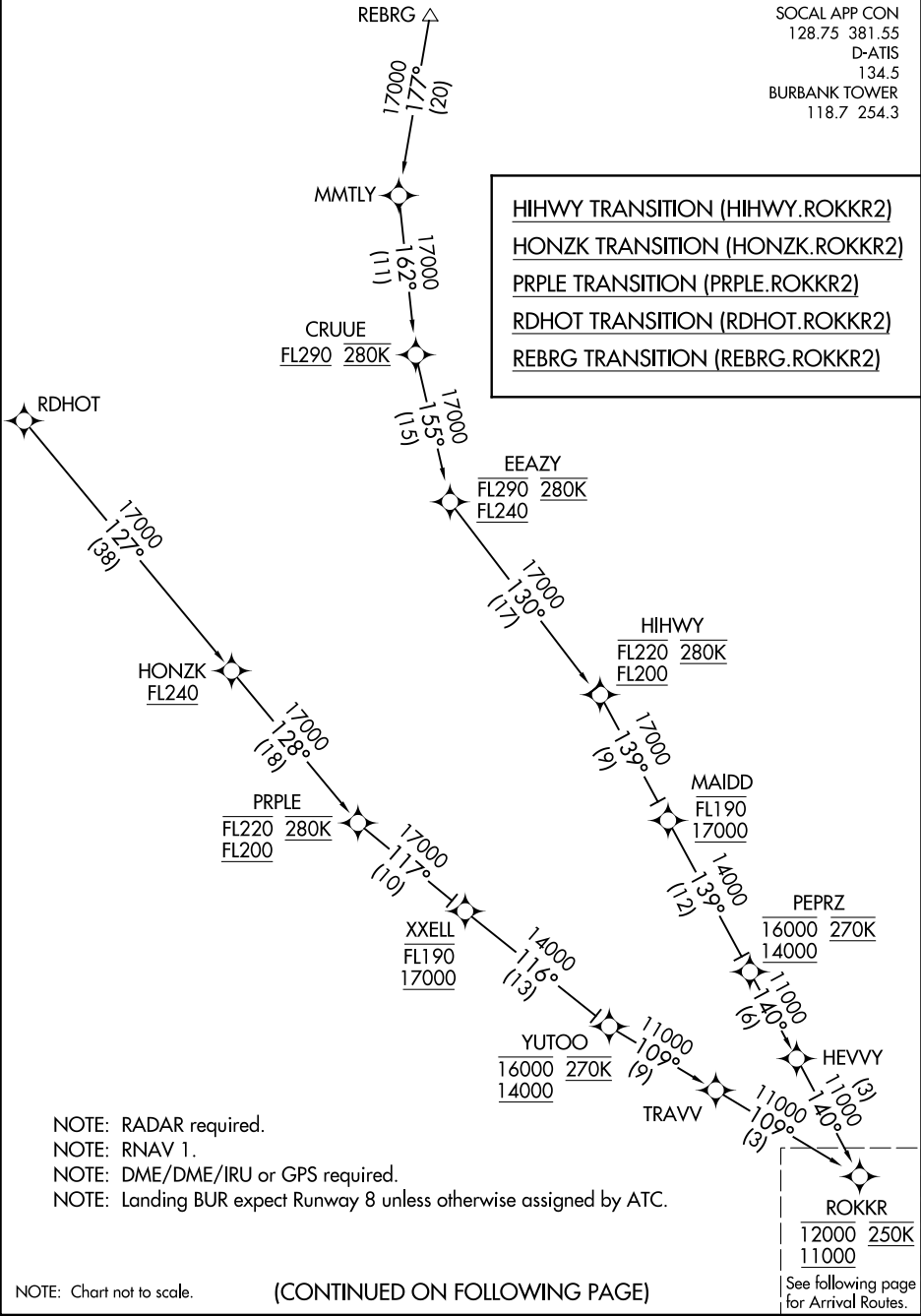


SOCAL APP CON  
128.75 381.55  
D-ATIS  
134.5  
BURBANK TOWER  
118.7 254.3

- HIHWY TRANSITION (HIHWY.ROKKR2)
- HONZK TRANSITION (HONZK.ROKKR2)
- PRPLE TRANSITION (PRPLE.ROKKR2)
- RDHOT TRANSITION (RDHOT.ROKKR2)
- REBRG TRANSITION (REBRG.ROKKR2)



NOTE: RADAR required.  
 NOTE: RNAV 1.  
 NOTE: DME/DME/IRU or GPS required.  
 NOTE: Landing BUR expect Runway 8 unless otherwise assigned by ATC.

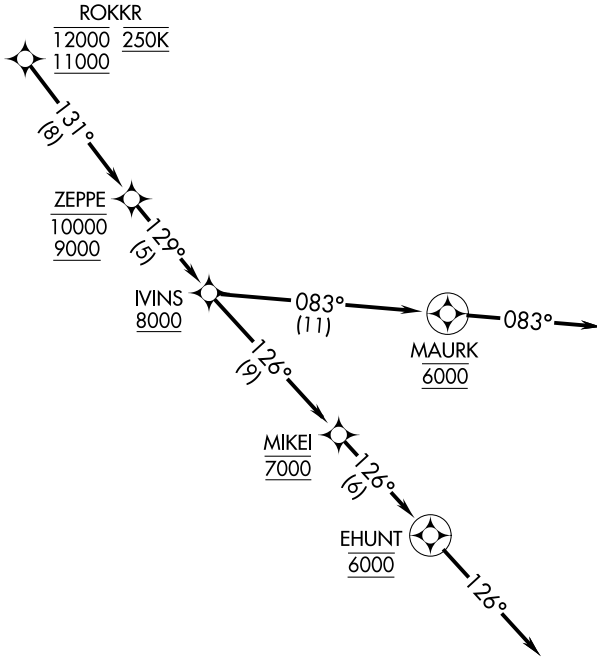
NOTE: Chart not to scale. (CONTINUED ON FOLLOWING PAGE)

See following page for Arrival Routes.

SW-3, 11 JUL 2024 to 08 AUG 2024

SW-3, 11 JUL 2024 to 08 AUG 2024

SOCAL APP CON  
128.75 381.55  
D-ATIS  
134.5  
BURBANK TOWER  
118.7 254.3



- NOTE: RADAR required.
- NOTE: RNAV 1.
- NOTE: DME/DME/IRU or GPS required.
- NOTE: Landing BUR expect Runway 8 unless otherwise assigned by ATC.

NOTE: Chart not to scale.

ARRIVAL ROUTE DESCRIPTION

From ROKKR on track 131° to cross ZEPPE between 9000 and 10000, then on track 129° to cross IVINS at or above 8000.

KBUR RUNWAY 8: From IVINS on track 126° to cross MIKEI at 7000. Expect ILS or LOC RWY 8 approach.

KBUR RUNWAY 15: From IVINS on track 083° to cross MAURK at 6000, then on track 083°. Expect RADAR vectors to final approach course.

KBUR RUNWAY 33: From IVINS on track 126° to cross MIKEI at 7000, then on track 126° to cross EHUNT at 6000, then on track 126°. Expect RADAR vectors to final approach course.

SW-3, 11 JUL 2024 to 08 AUG 2024

SW-3, 11 JUL 2024 to 08 AUG 2024