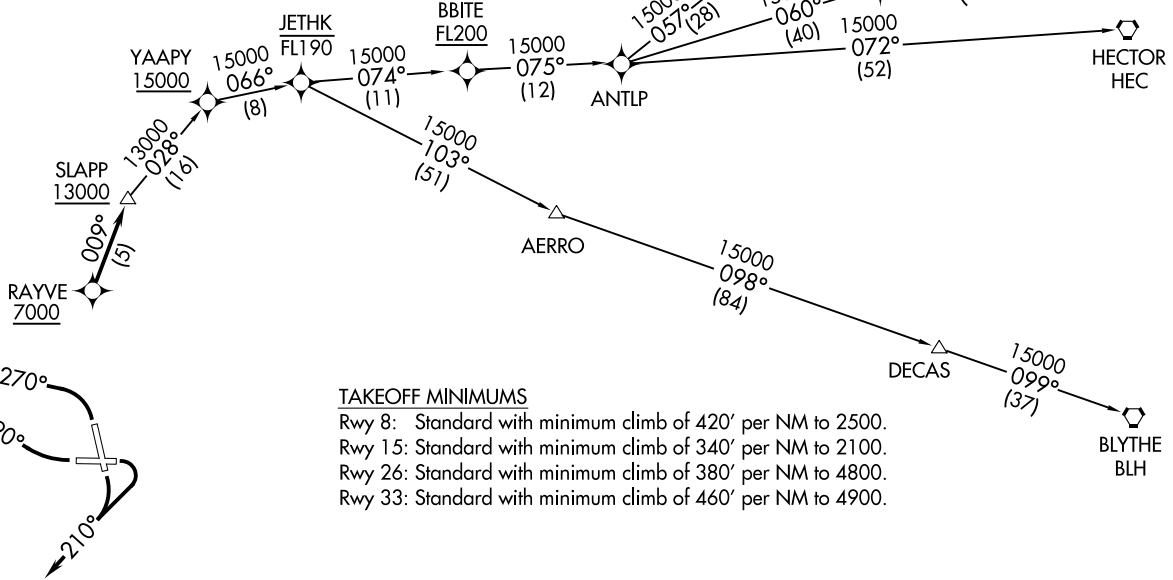


**TOP ALTITUDE:
FL230**

CLNC DEL
118.0 348.6
CPDLC
SOCAL DEP CON
124.6 298.85

- NOTE: DME/DME/IRU or GPS required.
- NOTE: RNAV 1.
- NOTE: RADAR required.
- NOTE: Turbojet only.
- NOTE: MISEN transition restricted to aircraft landing LAS terminal area.
- NOTE: HAILO transition ATC assigned only.



(NARRATIVE ON FOLLOWING PAGE)

NOTE: Chart not to scale.

SLAPP TWO DEPARTURE (RNAV)
(SLAPP2.SLAPP) 10SEP20

BURBANK, CALIFORNIA
BOB HOPE (BUTR)

(SLAPP2.SLAPP) 20254
SLAPP TWO DEPARTURE (RNAV)

AL-67 (FAA)

BOB HOPE (BUTR)
BURBANK, CALIFORNIA



DEPARTURE ROUTE DESCRIPTION

TAKEOFF RUNWAY 8: Climbing right turn to heading 210°, expect vectors to RAYVE, then on track 009° to cross SLAPP at or above 13000, thence. . . .

TAKEOFF RUNWAY 15: Climbing right turn to heading 210°, or as assigned by ATC, expect vectors to RAYVE, then on track 009° to cross SLAPP at or above 13000, thence. . . .

TAKEOFF RUNWAY 26: Climbing right turn to heading 290°, expect vectors to RAYVE, then on track 009° to cross SLAPP at or above 13000, thence. . . .

TAKEOFF RUNWAY 33: Climbing left turn to heading 270°, expect vectors to RAYVE, then on track 009° to cross SLAPP at or above 13000, thence. . . .

. . . .on (transition) maintain FL230. Expect filed altitude 10 minutes after departure.

BLYTHE TRANSITION (SLAPP2.BLH)

HAILO TRANSITION (SLAPP2.HAILO)

HECTOR TRANSITION (SLAPP2.HEC)

LAS VEGAS TRANSITION (SLAPP2.LAS)

MISEN TRANSITION (SLAPP2.MISEN)

SW-3, 11 JUL 2024 to 08 AUG 2024

SW-3, 11 JUL 2024 to 08 AUG 2024