

VAN NUYS THREE DEPARTURE  
(VNY3.VNY) 26MAY16

VAN NUYS THREE DEPARTURE  
(VNY3.VNY) 23334

AL-67 (FAAN)

BOB HOPE (BTR)  
BURBANK, CALIFORNIA

**TOP ALTITUDE:  
ASSIGNED BY ATC**

SOCAL DEP CON  
124.6 298.85  
CLNC DEL  
118.0 348.6  
CPDLC

EDWARDS  
116.4 EDW  
Chan 111

COREZ  
4000  
266°  
(25)

AVENAL  
117.1 AVE  
Chan 118

GORMAN  
116.1 GMN  
Chan 108

LAKE HUGHES  
114.35 LHS  
Chan 90(Y)

PALMDALE  
115.55 PMD  
Chan 102(Y)

DAGGETT  
113.2 DAG  
Chan 79

FILLMORE  
112.5 FIM  
Chan 72

CASTA  
8300

VICTORVILLE  
109.05 VCV  
Chan 27(Y)

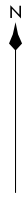
SUANA  
3700

LANGE

VAN NUYS  
113.1 VNY  
Chan 78

VENTURA  
116.55 VTU  
Chan 112(Y)

LOS ANGELES  
113.6 LAX  
Chan 83



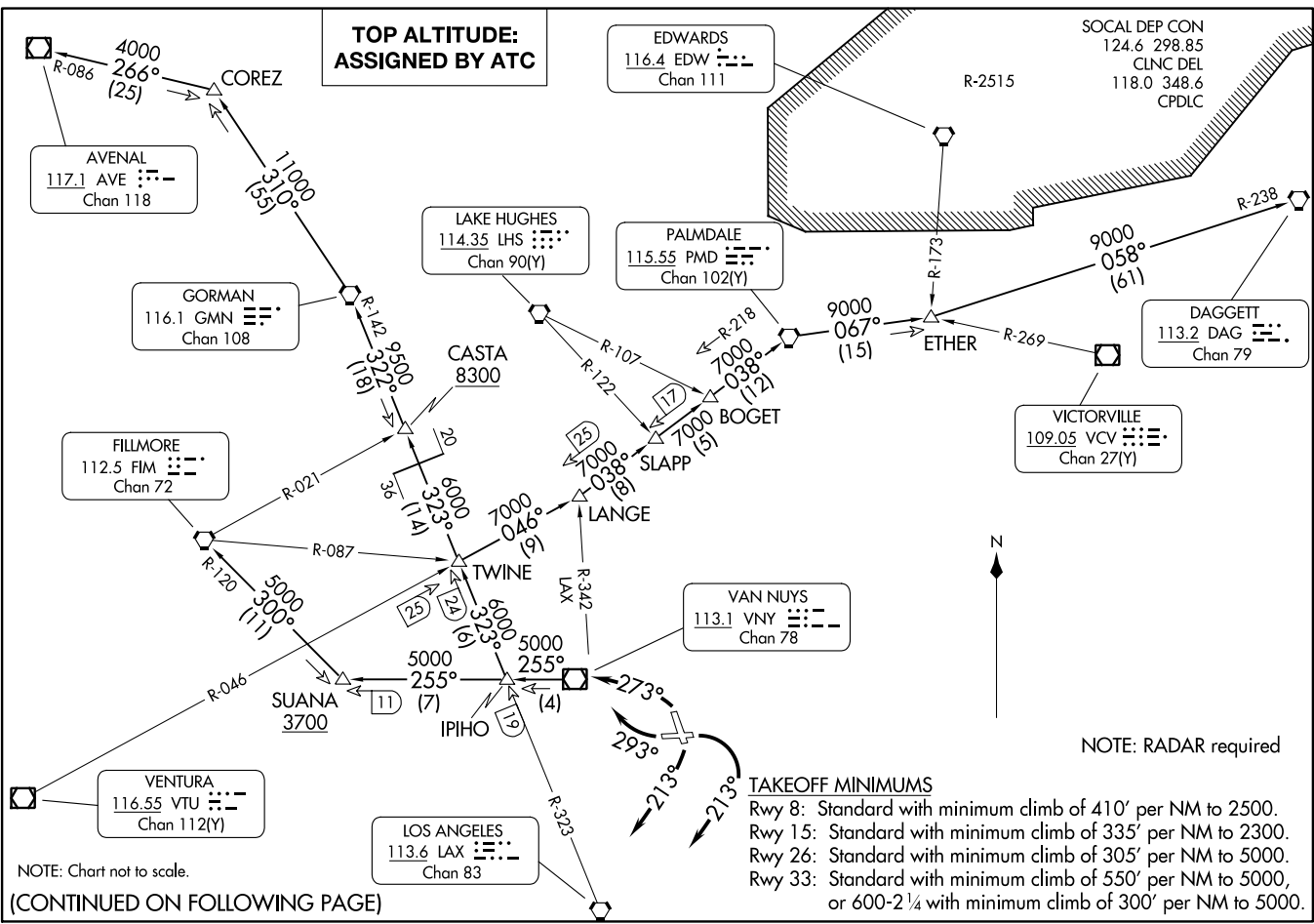
NOTE: RADAR required

**TAKEOFF MINIMUMS**

- Rwy 8: Standard with minimum climb of 410' per NM to 2500.
- Rwy 15: Standard with minimum climb of 335' per NM to 2300.
- Rwy 26: Standard with minimum climb of 305' per NM to 5000.
- Rwy 33: Standard with minimum climb of 550' per NM to 5000, or 600-2¼ with minimum climb of 300' per NM to 5000.

NOTE: Chart not to scale.

(CONTINUED ON FOLLOWING PAGE)





DEPARTURE ROUTE DESCRIPTION

TAKEOFF RUNWAY 8: Climbing right turn heading 213° . . . .

TAKEOFF RUNWAY 15: Climbing right turn heading 213° . . . .

TAKEOFF RUNWAY 26: Climbing right turn heading 293° . . . .

TAKEOFF RUNWAY 33: Climbing left turn heading 273° . . . .

. . . .expect RADAR vector to VNY VOR/DME. Thence via (transition) or (assigned route).

AVENAL TRANSITION (VNY3.AVE): From over VNY VOR/DME on VNY R-255 and LAX R-323 to TWINE, then on LAX R-323 and GMN R-142 to GMN VORTAC, then on GMN R-310 and AVE R-086 to AVE VOR/DME.

DAGGETT TRANSITION (VNY3.DAG): From over VNY VOR/DME on VNY R-255 and LAX R-323 to TWINE, then on VTU R-046 and PMD R-218 to PMD VORTAC, then on PMD R-067 and DAG R-238 to DAG VORTAC.

FILLMORE TRANSITION (VNY3.FIM): From over VNY VOR/DME on VNY R-255 and FIM R-120 to FIM VORTAC.

GORMAN TRANSITION (VNY3.GMN): From over VNY VOR/DME on VNY R-255 and LAX R-323 to TWINE, then on LAX R-323 and GMN R-142 to GMN VORTAC.

PALMDALE TRANSITION (VNY3.PMD): From over VNY VOR/DME on VNY R-255 and LAX R-323 to TWINE, then on VTU R-046 and PMD R-218 to PMD VORTAC.

TWINE TRANSITION (VNY3.TWINE): From over VNY VOR/DME on VNY R-255 and LAX R-323 to TWINE.

SW-3, 11 JUL 2024 to 08 AUG 2024

SW-3, 11 JUL 2024 to 08 AUG 2024