

APP CRS	Rwy Idg	3985
002°	TDZE	1001
	Apt Elev	1003

RNAV (GPS) RWY 36

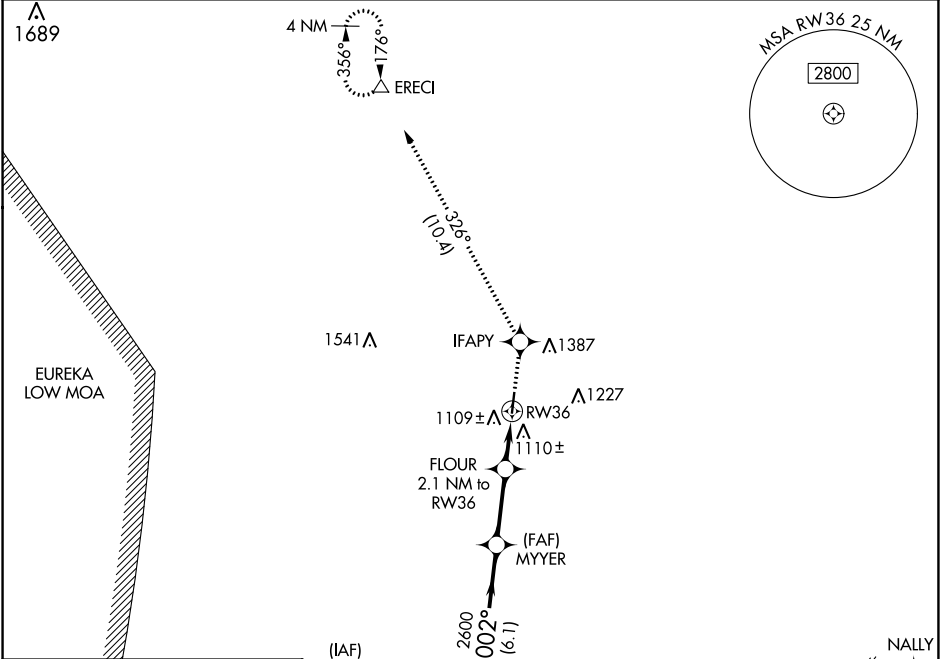
CHANUTE MARTIN JOHNSON (CNU)

RNP APCH - GPS.

Procedure NA at night. Rwy 36 helicopter visibility reduction below 1 SM NA.

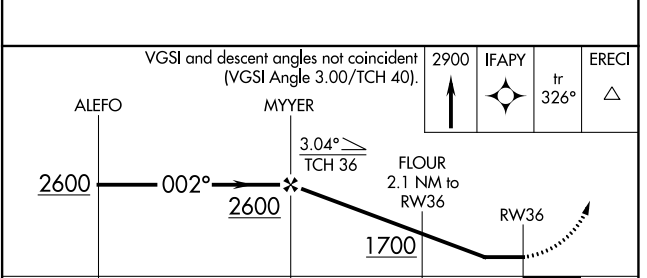
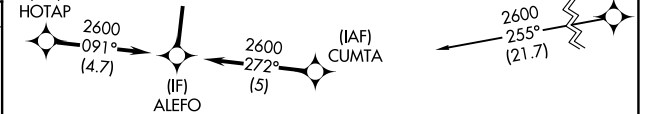
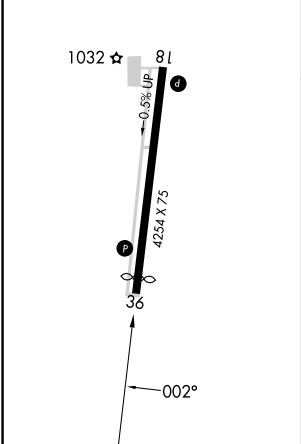
MISSED APPROACH: Climb to 2900 direct IFAPY and on track 326° to ERECI and hold.

ASOS 127.075	KANSAS CITY CENTER 132.9 279.5	UNICOM 122.9 (CTAF)
------------------------	--	-------------------------------



ELEV 1003	TDZE 1001
-----------	-----------

MIRL Rwy 18-36
REIL Rws 18 and 36



CATEGORY	A	B	C	D
LNAV MDA	1400-1	399 (400-1)	NA	
CIRCLING	1480-1 477 (500-1)	1620-1 617 (700-1)	NA	

NC-2, 11 JUL 2024 to 08 AUG 2024

NC-2, 11 JUL 2024 to 08 AUG 2024