

LOC I-CCI <b>108.9</b>	APP CRS <b>334°</b>	Rwy Idg TDZE Apt Elev	<b>9001</b> <b>45</b> <b>46</b>
---------------------------	------------------------	-----------------------------	---------------------------------------

# ILS or LOC RWY 33

CHARLESTON AFB/INTL (CHS)

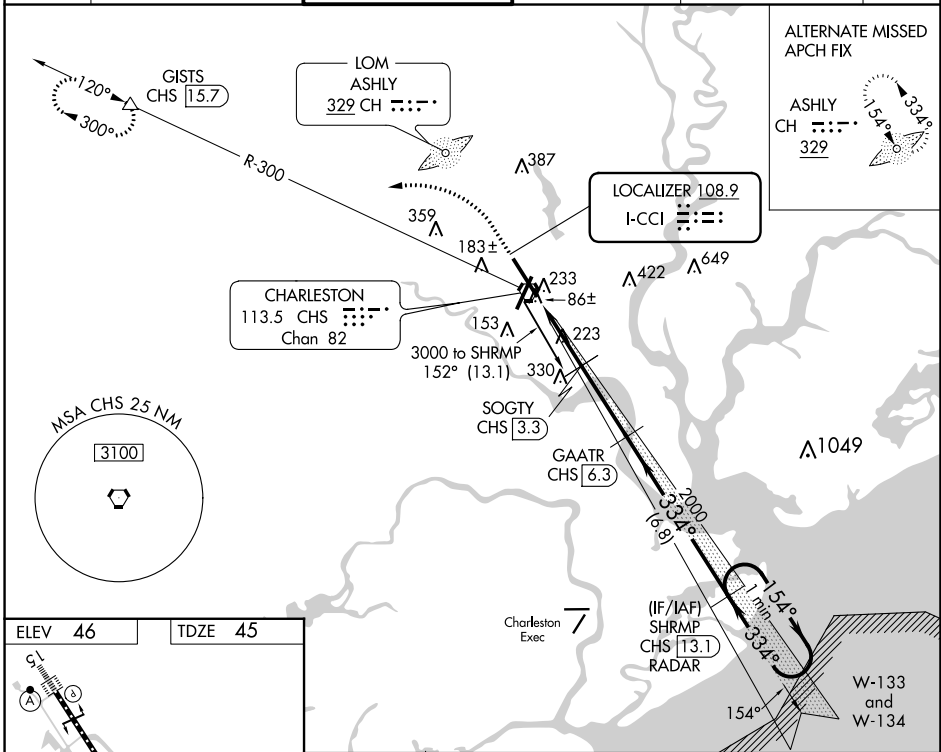
**⚠** DME from CHS VORTAC. Simultaneous reception of I-CCI and CHS DME required. DME required. For inop MALSRS, increase S-ILS 33 Cat E visibility to RVR 4000 and S-LOC 33 Cat E visibility to 1½%.  
**\*\* RVR 1800 authorized with use of FD or AP or HUD to DA.**

MALSRS



**MISSED APPROACH:** Climb to 500 then climbing left turn to 2100 on heading 280° and on CHS VORTAC R-300 to GISTS/15.7 DME and hold.

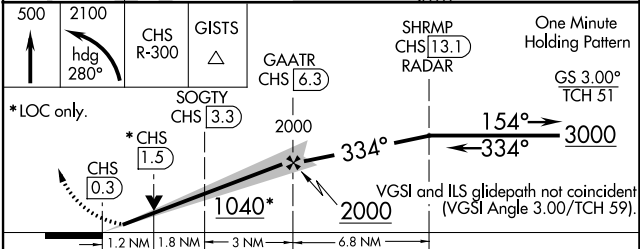
D-ATIS <b>124.75</b>	CHARLESTON APP CON <b>120.7 306.925</b>	CHARLESTON TOWER <b>126.0 239.0</b>	GND CON <b>121.9 348.6</b>	CLNC DEL <b>127.325 291.65</b>	CPDLC
-------------------------	--	--	-------------------------------	-----------------------------------	-------



ALTERNATE MISSED APCH FIX

ASHLY CH 329

ELEV 46	TDZE 45
---------	---------



CATEGORY	A	B	C	D	E
S-ILS 33 **	245/24		200 (200-½)		
S-LOC 33	480/24	435 (500-½)	480/45	435 (500-¾)	
CIRCLING	540-1	494 (500-1)	540-1½ 494 (500-1½)	740-2¼ 694 (700-2¼)	740-2½ 694 (700-2½)

SE-2, 11 JUL 2024 to 08 AUG 2024

SE-2, 11 JUL 2024 to 08 AUG 2024