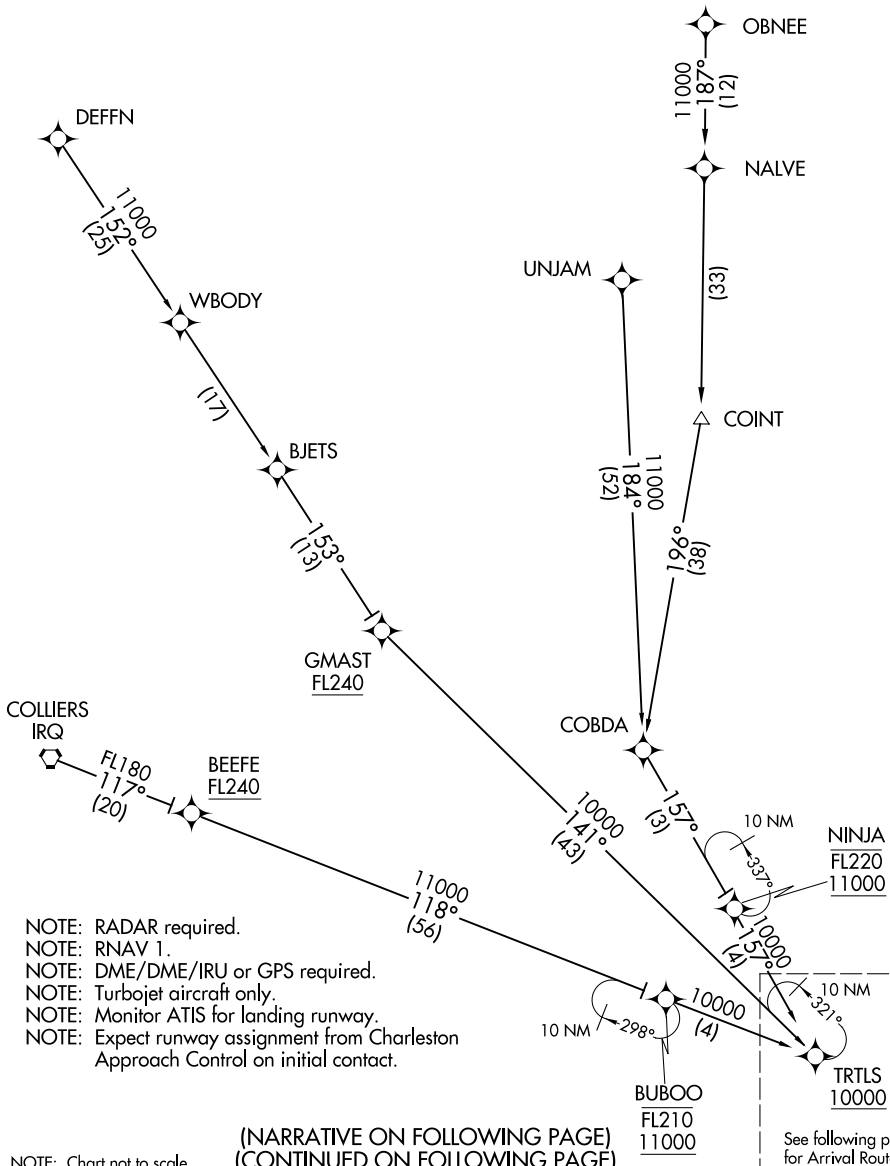


OSPRI SEVEN ARRIVAL (RNAV) Transition Routes CHARLESTON, SOUTH CAROLINA

CHARLESTON APP CON
 120.7 306.925
 CHS D-ATIS
 124.75
 JZI AWOS-3
 123.775

COLLIERS TRANSITION (IRQ.OSPRI7)
DEFFN TRANSITION (DEFFN.OSPRI7)
OBNEE TRANSITION (OBNEE.OSPRI7)
UNJAM TRANSITION (UNJAM.OSPRI7)



SE-2, 11 JUL 2024 to 08 AUG 2024

SE-2, 11 JUL 2024 to 08 AUG 2024

- NOTE: RADAR required.
- NOTE: RNAV 1.
- NOTE: DME/DME/IRU or GPS required.
- NOTE: Turbojet aircraft only.
- NOTE: Monitor ATIS for landing runway.
- NOTE: Expect runway assignment from Charleston Approach Control on initial contact.

(NARRATIVE ON FOLLOWING PAGE)
 (CONTINUED ON FOLLOWING PAGE)

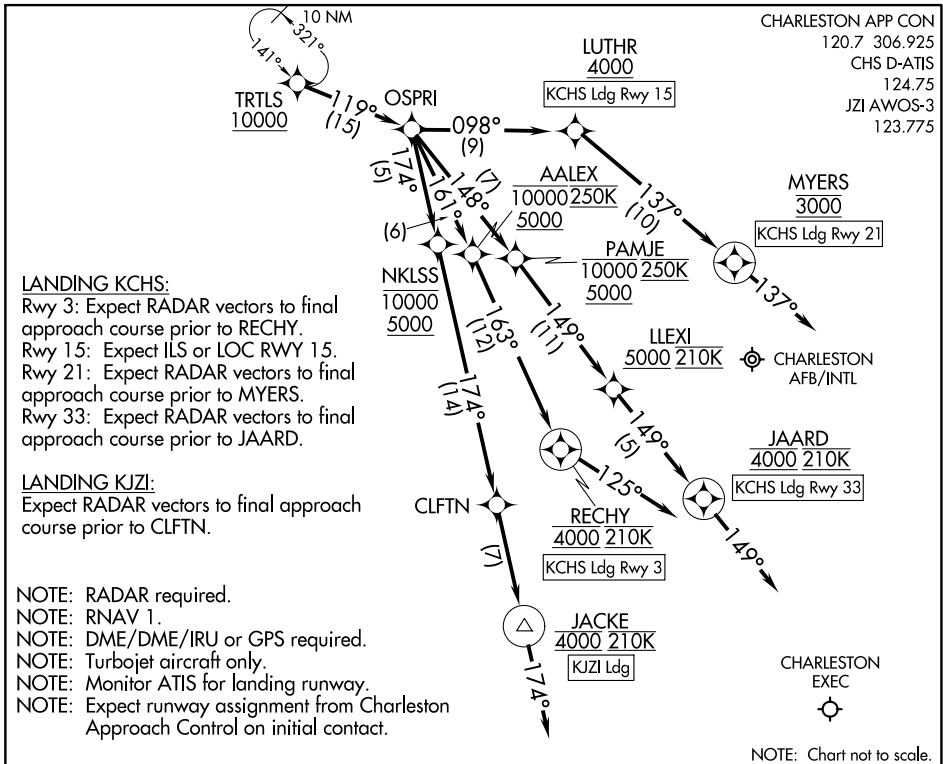
NOTE: Chart not to scale.

See following page for Arrival Routes.

OSPRI SEVEN ARRIVAL (RNAV) Transition Routes CHARLESTON, SOUTH CAROLINA

OSPRI SEVEN ARRIVAL (RNAV) Arrival Routes

CHARLESTON, SOUTH CAROLINA



LANDING KCHS:

Rwy 3: Expect RADAR vectors to final approach course prior to RECHY.
 Rwy 15: Expect ILS or LOC RWY 15.
 Rwy 21: Expect RADAR vectors to final approach course prior to MYERS.
 Rwy 33: Expect RADAR vectors to final approach course prior to JAARD.

LANDING KJZI:

Expect RADAR vectors to final approach course prior to CLFTN.

NOTE: RADAR required.

NOTE: RNAV 1.

NOTE: DME/DME/IRU or GPS required.

NOTE: Turbojet aircraft only.

NOTE: Monitor ATIS for landing runway.

NOTE: Expect runway assignment from Charleston Approach Control on initial contact.

ARRIVAL ROUTE DESCRIPTION

KCHS: From TRTLS on track 119° to OSPRI.

LANDING KCHS RUNWAY 3: From OSPRI on track 161° to cross AALEX between 5000 and 10000 and at 250K, then on track 163° to cross RECHY at 4000 and at 210K, then on heading 125° or as assigned by ATC. Expect RNP RWY 3 approach.

Non-RNP aircraft: Expect RADAR vectors to final approach course.

LANDING KCHS RUNWAY 15: From OSPRI on track 098° to cross LUTHR at or above 4000. Expect ILS or LOC RWY 15 approach.

LANDING KCHS RUNWAY 21: From OSPRI on track 098° to cross LUTHR at or above 4000, then on track 137° to cross MYERS at 3000, then on heading 137° or as assigned by ATC. Expect RNP RWY 21 approach. Non-RNP aircraft: Expect RADAR vectors to final approach course.

LANDING KCHS RUNWAY 33: From OSPRI on track 148° to cross PAMJE between 5000 and 10000 and at 250K, then on track 149° to cross LLEXI at or above 5000 and at 210K, then on track 149° to cross JAARD at 4000 and at 210K, then on heading 149° or as assigned by ATC. Expect RNP RWY 33 approach. Non-RNP aircraft: Expect RADAR vectors to final approach course.

LANDING KJZI: From TRTLS on track 119° to OSPRI, then on track 174° to cross NKLSS between 5000 and 10000, then on track 174° to CLFTN, then on track 174° to cross JACKE at 4000 and at 210K, then on heading 174° or as assigned by ATC. Expect RADAR vectors to final approach course.