

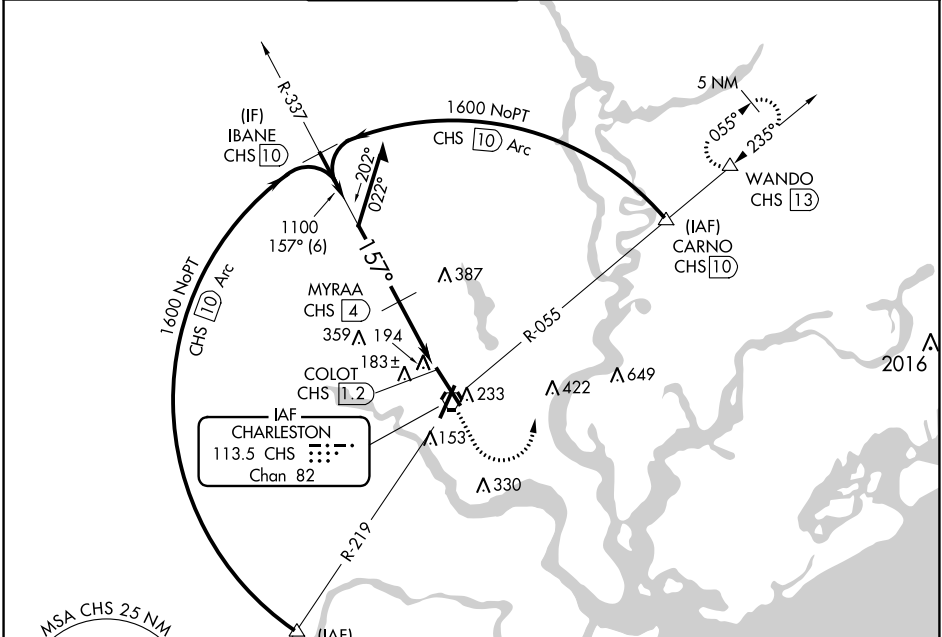
VORTAC CHS <b>113.5</b> Chan <b>82</b>	APP CRS <b>157°</b>	Rwy Idg TDZE <b>43</b> Apt Elev <b>46</b>	<b>9001</b>
--	------------------------	---	-------------

# VOR or TACAN RWY 15

CHARLESTON AFB/INTL (CHS)

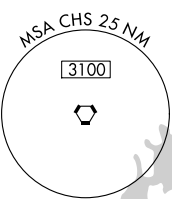
DME required.	ALSF-2	MISSED APPROACH: Climb to 500 then climbing left turn to 3500 on CHS VORTAC R-055 to WANDO/CHS 13 DME and hold, continue climb-in-hold to 3500.
For inop ALS, increase S-15 Cat A/B visibility to RVR 5500 and Cat C/D visibility to RVR 6000.		

D-ATIS <b>124.75</b>	CHARLESTON APP CON <b>120.7 306.925</b>	CHARLESTON TOWER <b>126.0 239.0</b>	GND CON <b>121.9 348.6</b>	CLNC DEL <b>127.325 291.65</b>	CPDLC
-------------------------	--	--	-------------------------------	-----------------------------------	-------

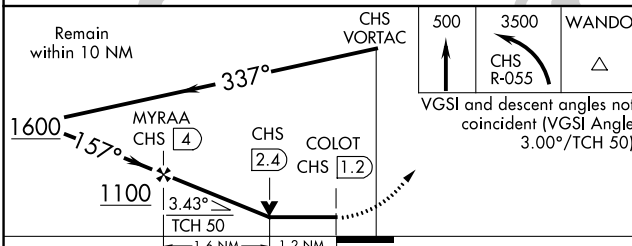
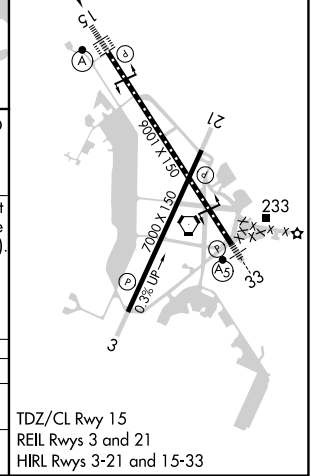


SE-2, 11 JUL 2024 to 08 AUG 2024

SE-2, 11 JUL 2024 to 08 AUG 2024



ELEV <b>46</b>	TDZE <b>43</b>
----------------	----------------



CATEGORY	A	B	C	D
S-15	460/24	417 (500-½)	460/40	417 (500-¾)
CIRCLING	540-1	494 (500-1)	540-1½ 494 (500-1½)	740-2¼ 694 (700-2¼)

TDZ/CL Rwy 15  
REIL Rws 3 and 21  
HIRL Rws 3-21 and 15-33