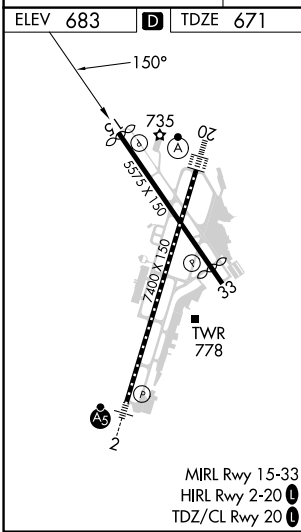
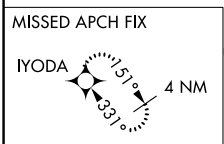
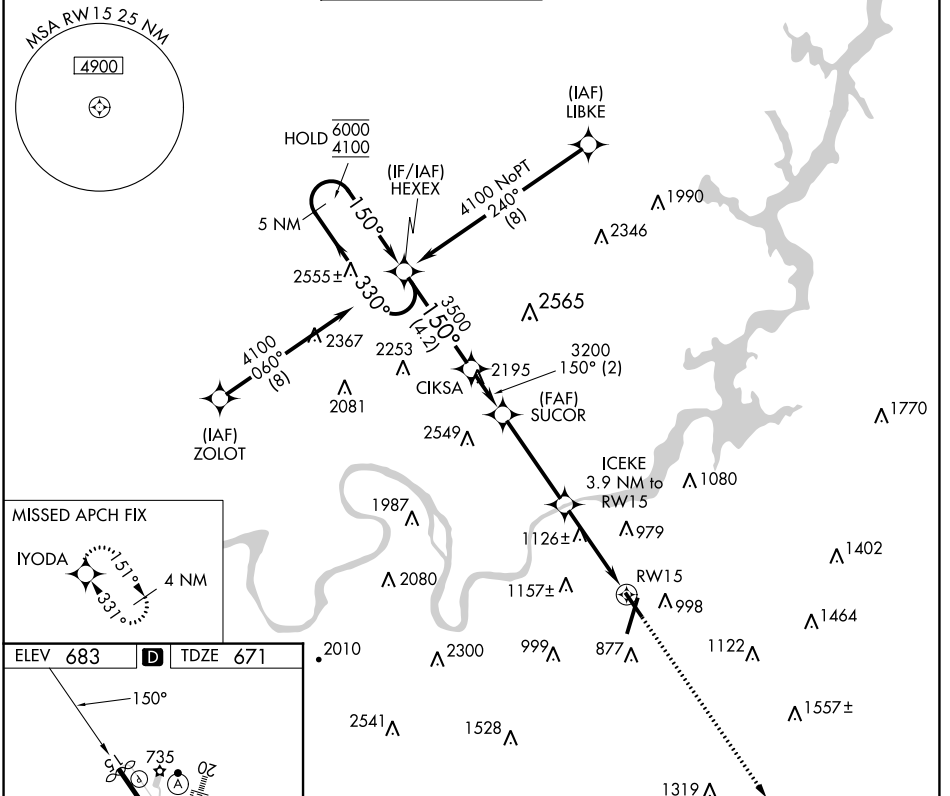


APP CRS	Rwy Idg	5469
150°	TDZE	671
	Apt Elev	683

RNAV (GPS) RWY 15

LOVELL FLD (CHA)

RNP APCH - GPS.			MISSED APPROACH: Climb to 3300 direct IYODA and hold.		
Straight-In Rwy 15 NA at night, Circling Rwy 15, 33 NA at night. Rwy 15 helicopter visibility reduction below 1 SM NA.					
ATIS	CHATTANOOGA APP CON *	CHATTANOOGA TOWER *	GND CON	CLNC DEL	UNICOM
119.85	125.1 379.1	118.3 (CTAF) 257.8	121.7 348.6	120.95 348.6	122.95



5 NM Holding Pattern	HEXEX	CIKSA	SUCOR	ICEKE 3.9 NM to RWY15	3300	IYODA
6000 ← 330°	4100 → 150°	150°	3500	3200	↑	✧
				3.00° TCH 45	1960	
						RWY15
CATEGORY	A	B	C	D		
LNAV MDA	1380-1	709 (700-1)	1380-2	709 (700-2)		
CIRCLING	1380-1	697 (700-1)	1480-2¼ 797 (800-2¼)	1580-3 897 (900-3)		

SE-1, 11 JUL 2024 to 08 AUG 2024

SE-1, 11 JUL 2024 to 08 AUG 2024