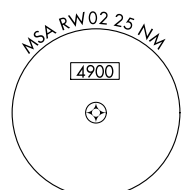
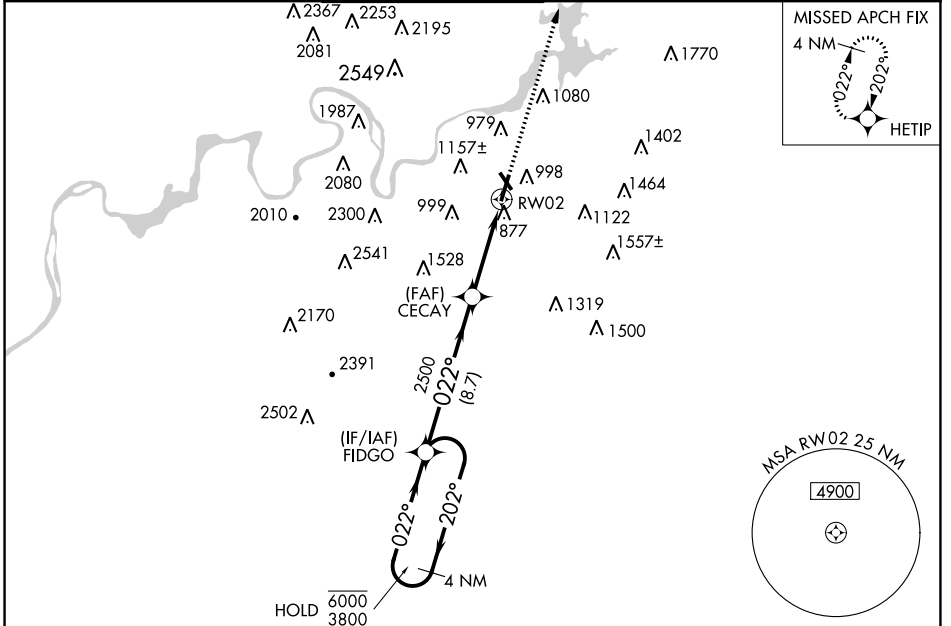


WAAS CH 65605 W02A	APP CRS 022°	Rwy Idg TDZE Apt Elev	7100 683 683
--	------------------------	-----------------------------	---

RNAV (GPS) RWY 2

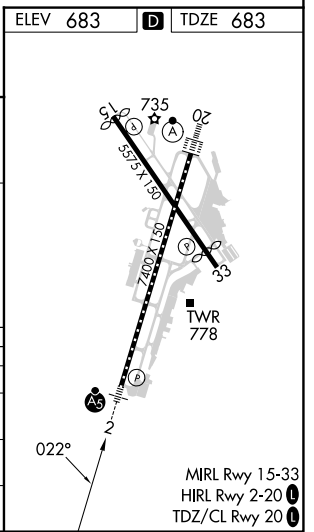
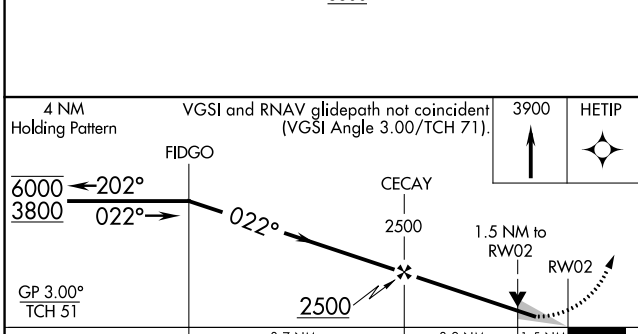
LOVELL FLD (CHA)

RNP APCH - GPS.		MALSRL	MISSED APPROACH: Climb to 3900 direct HETIP and hold, continue climb-in-hold to 3900.		
<p>▼ Circling Rwy 15, 33 NA at night. For uncompensated Baro-VNAV systems, LNAV/VNAV NA below -16°C or above 54°C. For inop ALS, increase LNAV/VNAV all Cats visibility to 1½ SM. **RVR 1800 authorized with use of FD or AP or HUD to DA.</p>					
ATIS 119.85	CHATTANOOGA APP CON * 125.1 379.1	CHATTANOOGA TOWER * 118.3 (CTAF) 0 257.8	GND CON 121.7 348.6	CLNC DEL 120.95 348.6	UNICOM 122.95



SE-1, 11 JUL 2024 to 08 AUG 2024

SE-1, 11 JUL 2024 to 08 AUG 2024



CATEGORY	A	B	C	D
LPV DA**		883/24	200 (200-½)	
LNAV/VNAV DA		1197/55	514 (600-1)	
LNAV MDA	1240/24	557 (600-½)	1240/60	557 (600-1¼)
C CIRCLING	1300-1 617 (700-1)	1340-1 657 (700-1)	1500-2½ 817 (900-2½)	1580-3 897 (900-3)

MIRL Rwy 15-33
HIRL Rwy 2-20
TDZ/CL Rwy 20