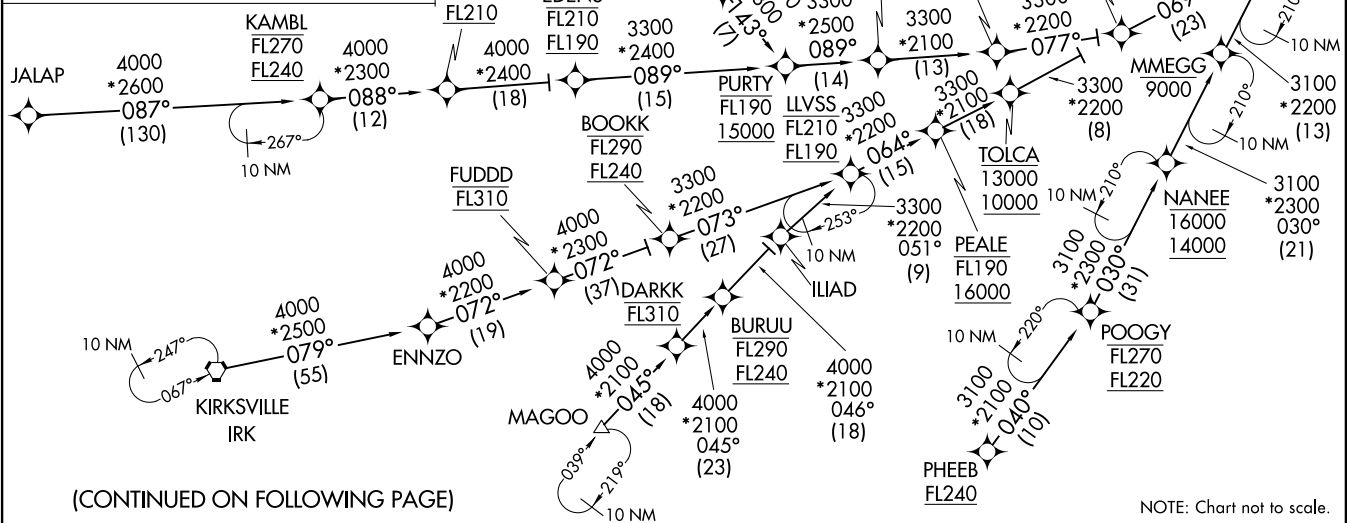


ENDEE SIX ARRIVAL (RNAV) Transition Routes  
(ENDEE. ENDEE6) 31DEC20

- CHUMP TRANSITION (CHUMP.ENDEE6)
- DARKK TRANSITION (DARKK.ENDEE6)
- EDENS TRANSITION (EDENS.ENDEE6)
- FUDD TRANSITION (FUDD.ENDEE6)
- JALAP TRANSITION (JALAP.ENDEE6)
- KAMBL TRANSITION (KAMBL.ENDEE6)
- KIRKSVILLE TRANSITION (IRK.ENDEE6)
- LLVSS TRANSITION (LLVSS.ENDEE6)
- MAGOO TRANSITION (MAGOO.ENDEE6)
- NANEE TRANSITION (NANEE.ENDEE6)
- OHHMY TRANSITION (OHHMY.ENDEE6)
- PHEEB TRANSITION (PHEEB.ENDEE6)
- POOGY TRANSITION (POOGY.ENDEE6)
- UGGLY TRANSITION (UGGLY.ENDEE6)



NOTE: RADAR required.  
 NOTE: RNAV 1.  
 NOTE: DME/DME/IRU or GPS required.  
 NOTE: DARKK, FUDD, NANEE, LLVSS, CHUMP, EDENS, and POOGY transitions: ATC assigned only.

D-ATIS  
 132.75  
 CHICAGO APP CON  
 128.2 353.875

See following page for Arrival Routes.  
**ENDEE**  
 7000 250K  
 6000

(ENDEE. ENDEE6) 20366  
 AL-81 (FAA)  
 CHICAGO MIDWAY INTL (MDW)  
 CHICAGO, ILLINOIS

(CONTINUED ON FOLLOWING PAGE)

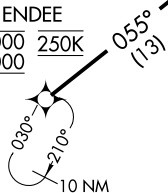
NOTE: Chart not to scale.

CHICAGO, ILLINOIS  
 CHICAGO MIDWAY INTL (MDW)

ENDEE SIX ARRIVAL (RNAV) Arrival Routes  
 (ENDEE, ENDEE6) 31 DEC 20  
 CHICAGO, ILLINOIS  
 CHICAGO MIDWAY INTL (MDW)

D-ATIS  
 132.75  
 CHICAGO APP CON  
 128.2 353.875

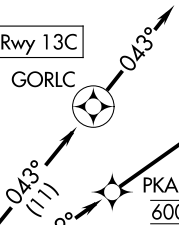
ENDEE  
 7000 250K  
 6000



STKNY  
 6000

KMDW ldg Rwy 13C

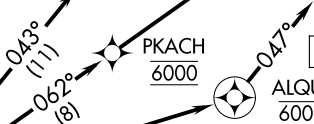
GORLC



PKACH  
 6000

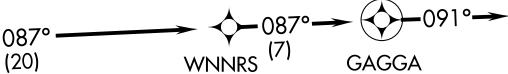
ALQUE  
 6000

KMDW ldg Rwy 4R



WNNRS  
 (7)

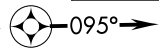
KMDW ldg Rwy 31C



TUURN

090°  
 (6)

WADLL KMDW ldg Rwy 22L



NOTE: RADAR required.  
 NOTE: RNAV 1.  
 NOTE: DME/DME/IRU or GPS required.



**ARRIVAL ROUTE DESCRIPTION**

From ENDEE on track 055° to cross STKNY at 6000.

**LANDING RWY 4R:** From STKNY on track 077° to cross ALQUE at 6000, then on track 047°.  
 Expect ILS or LOC RWY 4R approach or RADAR vectors to final approach course.

**LANDING RWY 13C:** From STKNY on track 043° to GORLC, then on track 043°.  
 Expect RADAR vectors to final approach course.

**LANDING RWY 22L:** From STKNY on track 062° to cross PKACH at 6000, then on track 062° to TUURN, then on track 090° to WADLL, then on track 095°. Expect RADAR vectors to final approach course.

**LANDING RWY 31C:** From STKNY on track 087° to WNNRS, then on track 087° to GAGGA, then on track 091°. Expect RADAR vectors to final approach course.

NOTE: Chart not to scale.

(ENDEE, ENDEE6) 20366  
 ENDEE SIX ARRIVAL (RNAV) Arrival Routes  
 AL-81 (FAA)  
 CHICAGO MIDWAY INTL (MDW)  
 CHICAGO, ILLINOIS