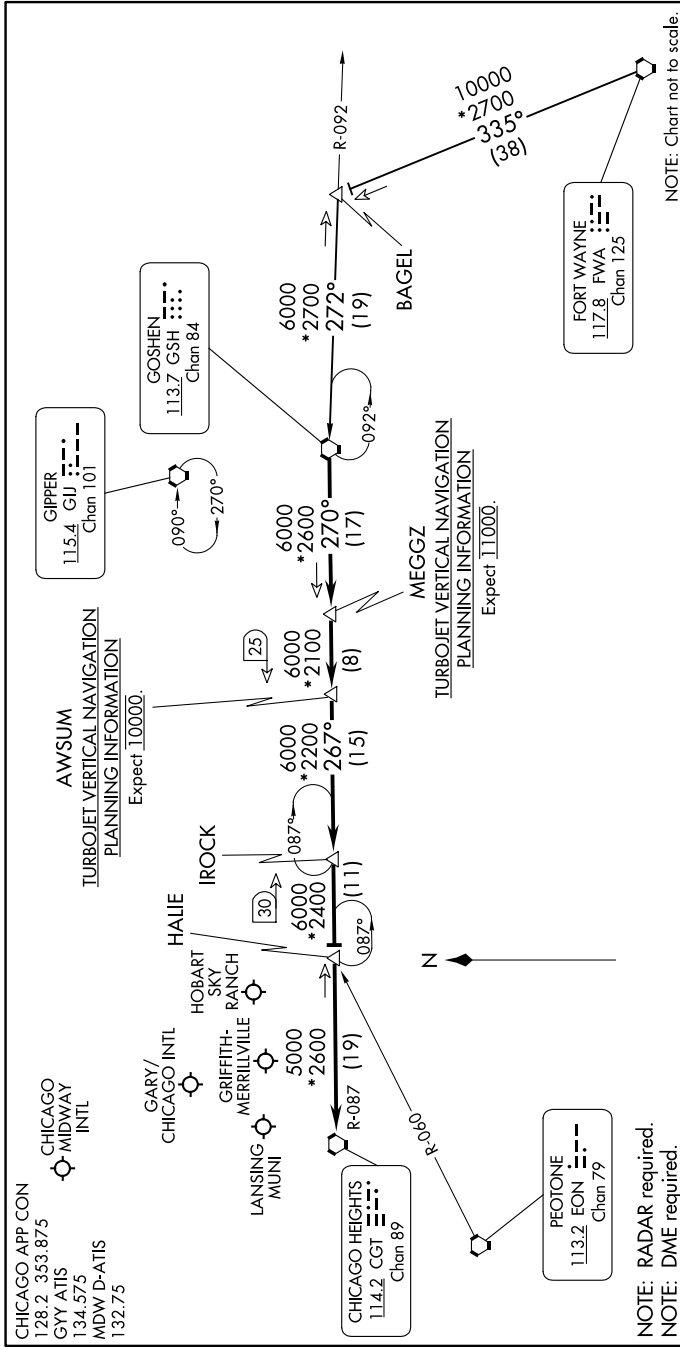


# GOSHEN NINE ARRIVAL

EC-3, 11 JUL 2024 to 08 AUG 2024



NOTE: Chart not to scale.

## ARRIVAL ROUTE DESCRIPTION

FORT WAYNE TRANSITION (FWA.GSH9): From over FWA VORTAC on FWA R-335 to BAGEL then on GSH R-092 to GSH VORTAC. Thence....

BAGEL TRANSITION (BAGEL.GSH9): From over BAGEL on GSH R-092 to GSH VORTAC. Thence....

....from over GSH VORTAC on GSH R-270 to MEGGZ, then on GSH R-270 to AWSUM, then on GSH R-270 and CGT R-087 to IROCK, then on CGT R-087 to HALIE, then on CGT R-087 to CGT VORTAC. Expect RADAR vectors to final approach course.

# GOSHEN NINE ARRIVAL

EC-3, 11 JUL 2024 to 08 AUG 2024