

| | | |
|---|------------------------|---|
| LOC/DME I-HKH 111.5 Chan 52 | APP CRS 047° | Rwy Idg TDZE 619 Apt Elev 620 |
|---|------------------------|---|

ILS or LOC RWY 4R

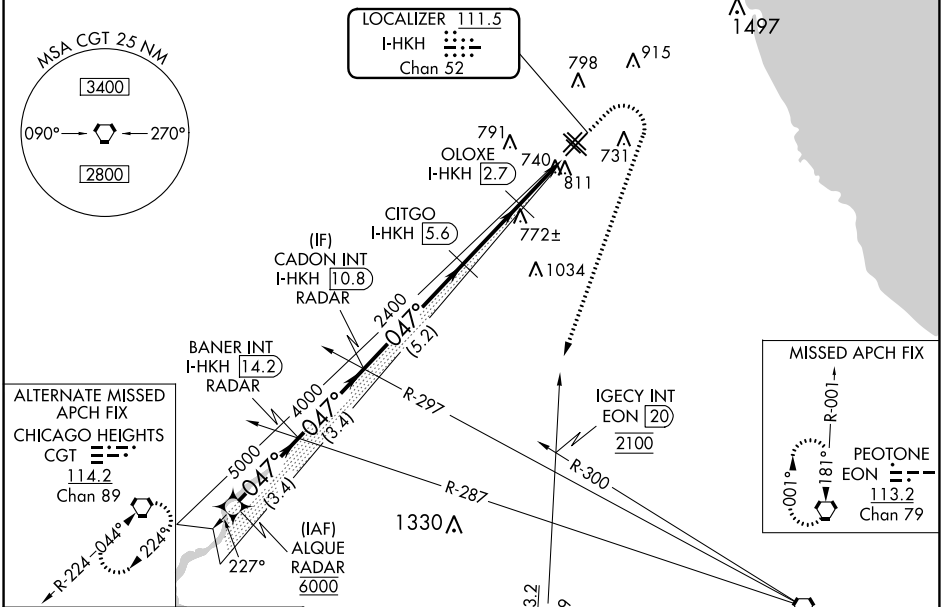
CHICAGO MIDWAY INTL (MDW)

RNAV 1-GPS or RADAR required for procedure entry.
DME required for LOC only.

- ▼ Circling Rwy 31R NA at night.
- ▲ Rwy 4R helicopter visibility reduction below RVR 4000 NA.

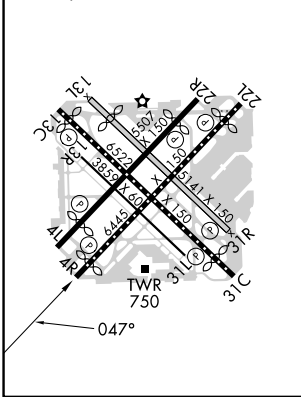
MISSED APPROACH: Climb to 1100 then climbing right turn to 2100 on heading 230° and on EON VORTAC R-001 until crossing IGECY INT/EON 20 DME, then climb to 2600 to EON VORTAC and hold.

| | | | | | |
|-------------------------|---|--------------------------------------|---------------------------|----------------------------|-------|
| D-ATIS 132.75 | CHICAGO APP CON 128.2 353.875 | MIDWAY TOWER 135.2 269.125 | GND CON 118.075 | CLNC DEL 124.625 | CPDLC |
|-------------------------|---|--------------------------------------|---------------------------|----------------------------|-------|



ELEV 620 TDZE 619

HIRL Rws 4R-22L and 13C-31C
MIRL Rws 4L-22R, 13L-31R, and 13R-31L
REIL Rws 4R, 22L, and 31C
RLS Rws 13C and 31C



VGSI and ILS glidepath not coincident (VGSI Angle 3.00/TCH 66).

| | | | | | | |
|-------------|----------------------------|----------------------------|-----------------------|-------------------------|------------|-----------|
| ALQUE RADAR | BANER INT I-HKH 14.2 RADAR | CADON INT I-HKH 10.8 RADAR | CITGO I-HKH 5.6 | OLOXE I-HKH 2.7 | *I-HKH 1.2 | I-HKH 0.2 |
| 6000 | 5000 | 4000 | 2400 | *1460 | | |
| GS 3.00° | | | | | | |
| TCH 50 | | | | | | |
| | 3.4 NM | 3.4 NM | 5.2 NM | 2.9 NM | 1.5 NM | 1 NM |
| CATEGORY | A | B | C | D | | |
| S-ILS 4R | 869/40 | 250 (300-¾) | 869/50 | 250 (300-1) | | |
| S-LOC 4R | 1000/55 | 381 (400-1) | 1000/60 | 381 (400-1¼) | | |
| CIRCLING | 1120-1 | 500 (500-1) | 1340-2 720 (800-2) | 1340-2¼ 720 (800-2¼) | | |

*LOC only

EC-3, 11 JUL 2024 to 08 AUG 2024

EC-3, 11 JUL 2024 to 08 AUG 2024