

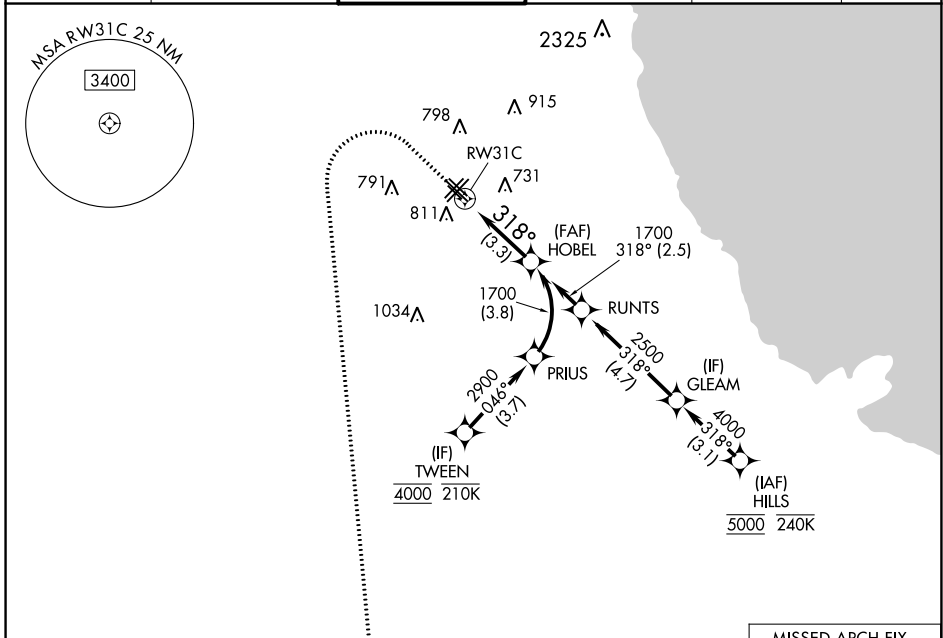
APP CRS <b>318°</b>	Rwy Idg <b>5826</b>
	TDZE <b>613</b>
	Apt Elev <b>620</b>

# RNAV (RNP) Y RWY 31C

CHICAGO MIDWAY INTL (MDW)

RNP AR APCH - GPS.	MISSED APPROACH: Climb to 1100 then climbing left turn to 2600 direct EON VORTAC and hold.
▼ For uncompensated Baro-VNAV systems, procedure NA below -20°C or above 54°C.	

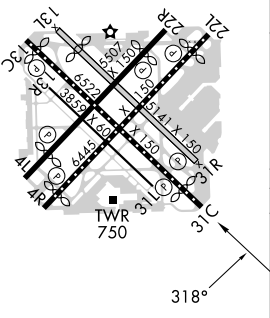
D-ATIS <b>132.75</b>	CHICAGO APP CON <b>128.2 353.875</b>	MIDWAY TOWER <b>135.2 269.125</b>	GND CON <b>118.075</b>	CLNC DEL <b>124.625</b>	CPDLC
-------------------------	-----------------------------------------	--------------------------------------	---------------------------	----------------------------	-------



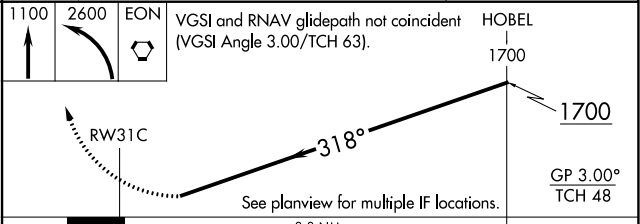
EC-3, 11 JUL 2024 to 08 AUG 2024

EC-3, 11 JUL 2024 to 08 AUG 2024

ELEV 620	<b>D</b>	TDZE 613
HIRL Rwy 4R-22L and 13C-31C		
MIRL Rwy 4L-22R, 13L-31R, and 13R-31L		
REIL Rwy 4R, 22L, and 31C		
RLLS Rwy 13C and 31C		



1100	2600	EON	VGSJ and RNAV glidepath not coincident (VGSJ Angle 3.00/TCH 63).	HOBEL 1700



CATEGORY	A	B	C	D
RNP 0.10 DA		905/45	292 (300-¾)	
RNP 0.20 DA		965/55	352 (400-1)	
RNP 0.30 DA		1029/60	416 (500-1¼)	

**AUTHORIZATION REQUIRED**