

WAAS CH <b>50512</b> <b>W31A</b>	APP CRS <b>318°</b>	Rwy Idg TDZE <b>613</b> Apt Elev <b>620</b>
--	------------------------	---

# RNAV (GPS) Z RWY 31C

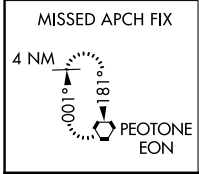
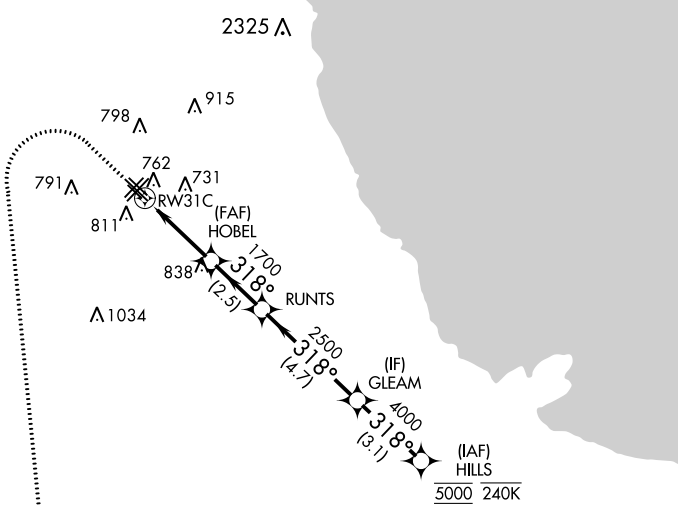
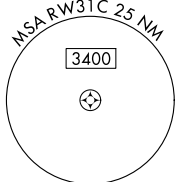
CHICAGO MIDWAY INTL (MDW)

RNP APCH - GPS.  
RADAR required.

MISSED APPROACH: Climb to 1100 then climbing left turn to 2600 direct EON VORTAC and hold.

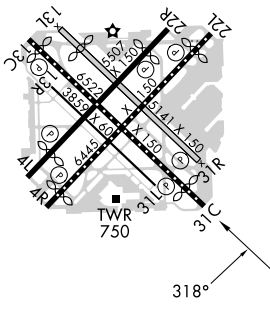
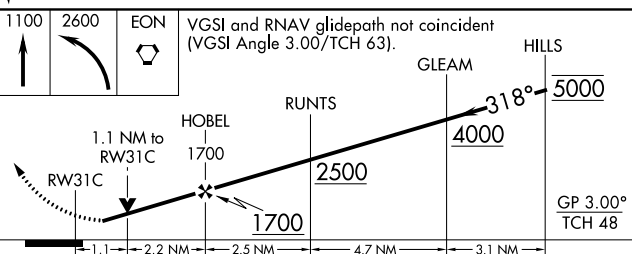
**▼** Circling Rwy 31R NA at night. Rwy 31C helicopter visibility reduction below RVR 4000 NA.  
**▲** For uncompensated Baro-VNAV systems, LNAV/VNAV NA below -19°C or above 54°C.

D-ATIS <b>132.75</b>	CHICAGO APP CON <b>128.2 353.875</b>	MIDWAY TOWER <b>135.2 269.125</b>	GND CON <b>118.075</b>	CLNC DEL <b>124.625</b>	CPDLC
-------------------------	---	--------------------------------------	---------------------------	----------------------------	-------



ELEV <b>620</b>	<b>D</b>	TDZE <b>613</b>
-----------------	----------	-----------------

HIRL Rws 4R-22L and 13C-31C  
MIRL Rws 4L-22R, 13L-31R, and 13R-31L  
REIL Rws 4R, 22L, and 31C  
RLS Rws 13C and 31C



CATEGORY	A	B	C	D
LPV DA	863/40	250 (300-¾)		
LNAV/VNAV DA	953/50	340 (400-1)		
LNAV MDA	1020/55	407 (400-1)	1020/60	407 (400-1¼)
<b>C</b> CIRCLING	1120-1	500 (500-1)	1340-2 720 (800-2)	1340-2¼ 720 (800-2¼)

EC-3, 11 JUL 2024 to 08 AUG 2024

EC-3, 11 JUL 2024 to 08 AUG 2024