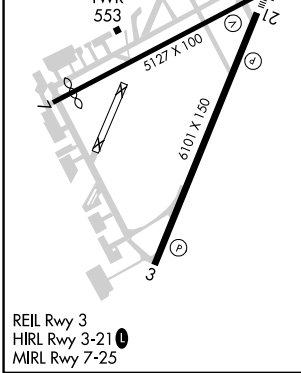
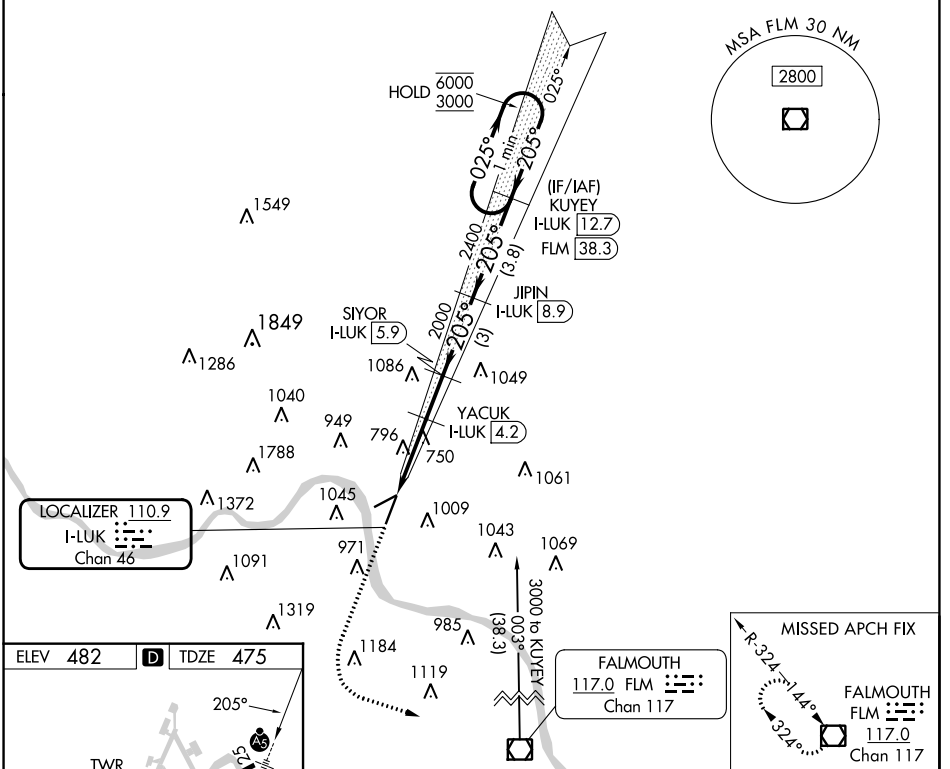


LOC/DME I-LUK	APP CRS	Rwy Idg	<b>6101</b>
<b>110.9</b>	<b>205°</b>	TDZE	<b>475</b>
Chan <b>46</b>		Apt Elev	<b>482</b>

# ILS or LOC RWY 21

CINCINNATI MUNI/LUNKEN FLD (LUK)

DME required.		MALSR		MISSED APPROACH: Climb to 2000 then climbing left turn to 3000 direct FLM VOR/DME and hold.		
Rwy 21 helicopter visibility reduction below RVR 4000 NA. Circling Rwy 7 NA at night. Circling NA for Cat D north of Rwy 7-25. Inop table does not apply to S-ILS 21 all Cats and S-LOC 21 Cats A and B.						
ATIS	CINCINNATI APP CON	LUNKEN TOWER ★	GND CON	CLNC DEL	CLNC DEL	UNICOM
<b>123.6</b>	<b>121.0 254.25</b>	<b>118.7 (CTAF) 0 257.8</b>	<b>121.9</b>	<b>121.9</b>	<b>124.9</b> (When twr closed)	<b>122.95</b>



ELEV 482	<b>D</b>	TDZE 475				
			SIYOR I-LUK [5.9]	JIPIN I-LUK [8.9]	KUYEY I-LUK [12.7]	One Minute Holding Pattern
			YACUK I-LUK [4.2]			
CATEGORY	A	B	C	D		
S-ILS 21L	797/50		322 (400-1)			
S-LOC 21L	1060/50	585 (600-1)	1060-1¼	585 (600-1¼)		
CIRCLING	1260-1	1360-1¼	1360-2½	1400-3		
	778 (800-1)	878 (900-1¼)	878 (900-2½)	918 (1000-3)		

EC-2, 11 JUL 2024 to 08 AUG 2024

EC-2, 11 JUL 2024 to 08 AUG 2024