

BRWNZ FOUR ARRIVAL (RNAV) Transition Routes
 (BRWNZ.BRWNZ4) 22APR21

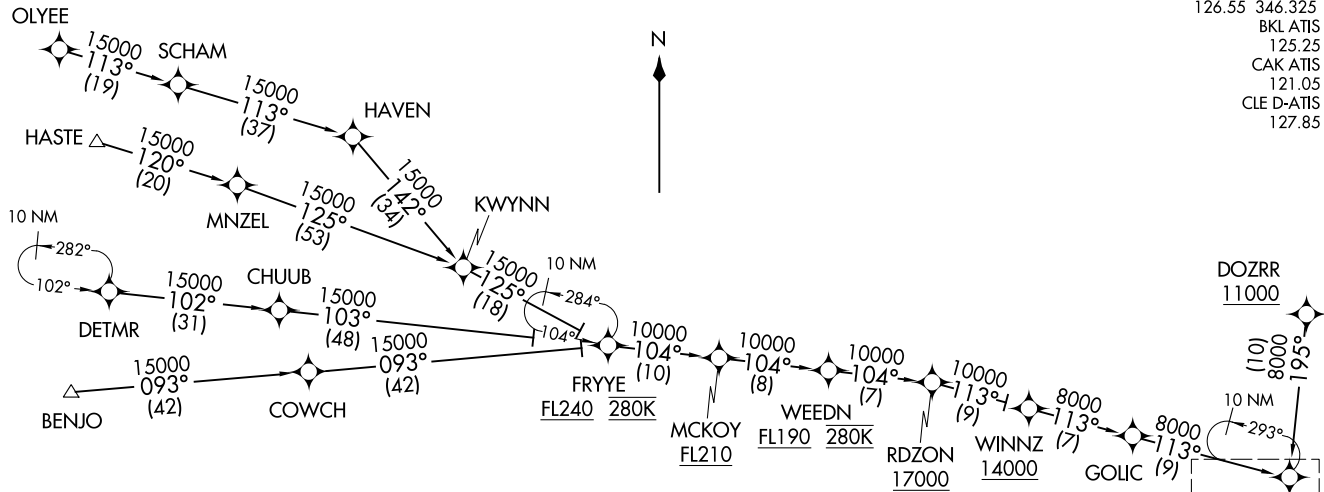
CLEVELAND, OHIO

CLEVELAND APP CON
 126.55 346.325
 BKL ATIS
 125.25
 CAK ATIS
 121.05
 CLE D-ATIS
 127.85

BRWNZ FOUR ARRIVAL (RNAV) Transition Routes
 (BRWNZ.BRWNZ4) 22139

AL-84 (FAA)

CLEVELAND, OHIO



BRWNZ
 14000 280K
 11000

See following page for arrival routes

- NOTE: RADAR required.
- NOTE: RNAV 1.
- NOTE: DME/DME/IRU or GPS required.
- NOTE: Jet aircraft expect "descend via" clearance from Cleveland Center.
- NOTE: KCLE LANDING SOUTH: Use Rwy 24R Transition, expect runway assignment from CLEVELAND APP CON no later than 10 NM from BRWNZ.
- NOTE: KCLE LANDING NORTH: Use Rwy 6L Transition, expect runway assignment from CLEVELAND APP CON no later than 10 NM from BRWNZ.
- NOTE: OLYEE TRANSITION: Do not file - to be assigned by ATC.
- NOTE: DOZRR TRANSITION: Except for flights originating in Canada, do not file - to be assigned by ATC.
- NOTE: BENJO TRANSITION: For use by turbojet aircraft only.
- NOTE: WINNZ TRANSITION: For Detroit Metropolitan Area departures only.

- BENJO TRANSITION (BENJO.BRWNZ4)
 - DETMR TRANSITION (DETMR.BRWNZ4)
 - DOZRR TRANSITION (DOZRR.BRWNZ4)
 - FRYYE TRANSITION (FRYYE.BRWNZ4)
 - HASTE TRANSITION (HASTE.BRWNZ4)
 - OLYEE TRANSITION (OLYEE.BRWNZ4)
 - WINNZ TRANSITION (WINNZ.BRWNZ4)

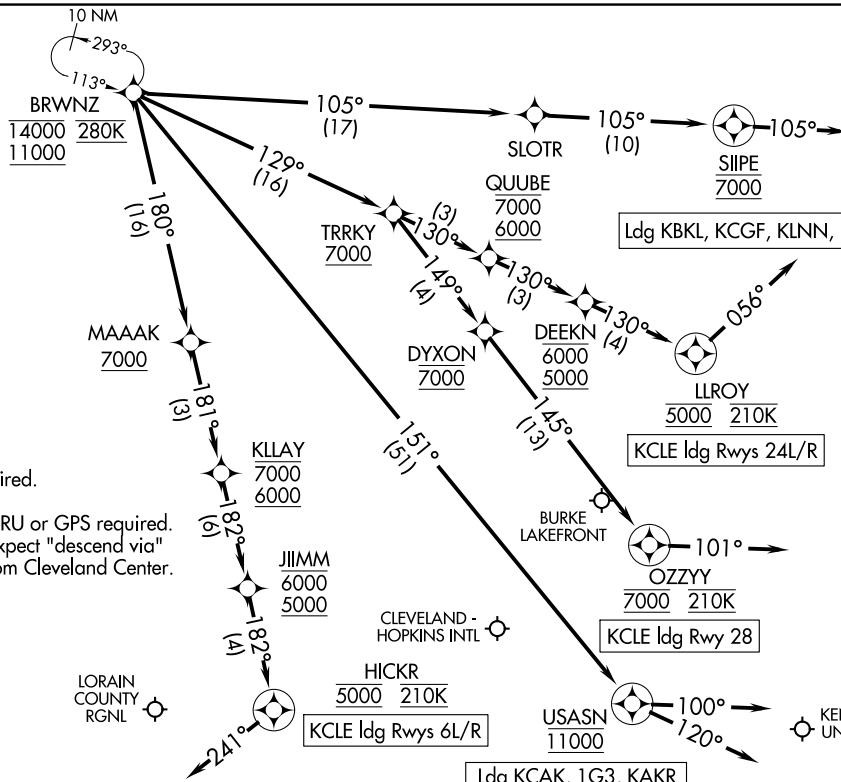
NOTE: Chart not to scale. (CONTINUED ON FOLLOWING PAGE)

BRWNZ FOUR ARRIVAL (RNAV) Arrival Routes
(BRWNZ, BRWNZ4) 22APR21

BRWNZ FOUR ARRIVAL (RNAV) Arrival Routes
(BRWNZ, BRWNZ4) 23110

AL-84 (FAA)

CLEVELAND APP CON
126.55 346.325
BKL ATIS
125.25
CAK ATIS
121.05
CLE D-ATIS
127.85



LAKE COUNTY EXEC
CUYAHOGA COUNTY

LORAIN COUNTY RGNL

KENT STATE UNIVERSITY
AKRON FULTON INTL
AKRON-CANTON RGNL

NOTE: RADAR required.
NOTE: RNAV 1.
NOTE: DME/DME/IRU or GPS required.
NOTE: Jet aircraft expect "descend via" clearance from Cleveland Center.

NOTE: KCLF LANDING SOUTH: Use Rwy 24R Transition, expect runway assignment from CLEVELAND APP CON no later than 10 NM from BRWNZ.
NOTE: KCLF LANDING NORTH: Use Rwy 6L Transition, expect runway assignment from CLEVELAND APP CON no later than 10 NM from BRWNZ.

(NARRATIVE ON FOLLOWING PAGE)

NOTE: Chart not to scale.

CLEVELAND, OHIO

CLEVELAND, OHIO

BRWNZ FOUR ARRIVAL (RNAV)

CLEVELAND, OHIO

ARRIVAL ROUTE DESCRIPTION

LANDING KCLE RUNWAYS 6L/R: From BRWNZ on track 180° to cross MAAAK at or above 7000, then on track 181° to cross KLLAY between 6000 and 7000, then on track 182° to cross JIIMM between 5000 and 6000, then on track 182° to cross HICKR at 5000 and at 210K, then on heading 241° or as assigned by ATC. Expect ILS, RNAV (RNP), or RNAV (GPS) approach from HICKR, or RADAR vectors to final approach course.

LANDING KCLE RUNWAYS 24L/R: From BRWNZ on track 129° to cross TRRKY at or above 7000, then on track 130° to cross QUUBE between 6000 and 7000, then on track 130° to cross DEEKN between 5000 and 6000, then on track 130° to cross LLROY at 5000 and at 210K, then on heading 056° or as assigned by ATC. Expect ILS, RNAV (RNP), or RNAV (GPS) approach from LLROY, or RADAR vectors to final approach course.

LANDING KCLE RUNWAY 28: From BRWNZ on track 129° to cross TRRKY at or above 7000, then on track 149° to cross DYXON at 7000, then on track 145° to cross OZZYY at 7000 and at 210K, then on heading 101° or as assigned by ATC. Expect RADAR vectors to final approach course.

LANDING 1G3/KAKR: From BRWNZ on track 151° to cross USASN at 11000, then on track 100°. Expect RADAR vectors to final approach course.

LANDING KLPR/KLNN/KCGF/KBKL: From BRWNZ on track 105° to SLOTR, then on track 105° to cross SIIPE at 7000, then on track 105°. Expect RADAR vectors to final approach course.

LANDING KCAK: From BRWNZ on track 151° to cross USASN at 11000, then on track 120°. Expect RADAR vectors to final approach course.

EC-2, 11 JUL 2024 to 08 AUG 2024

EC-2, 11 JUL 2024 to 08 AUG 2024