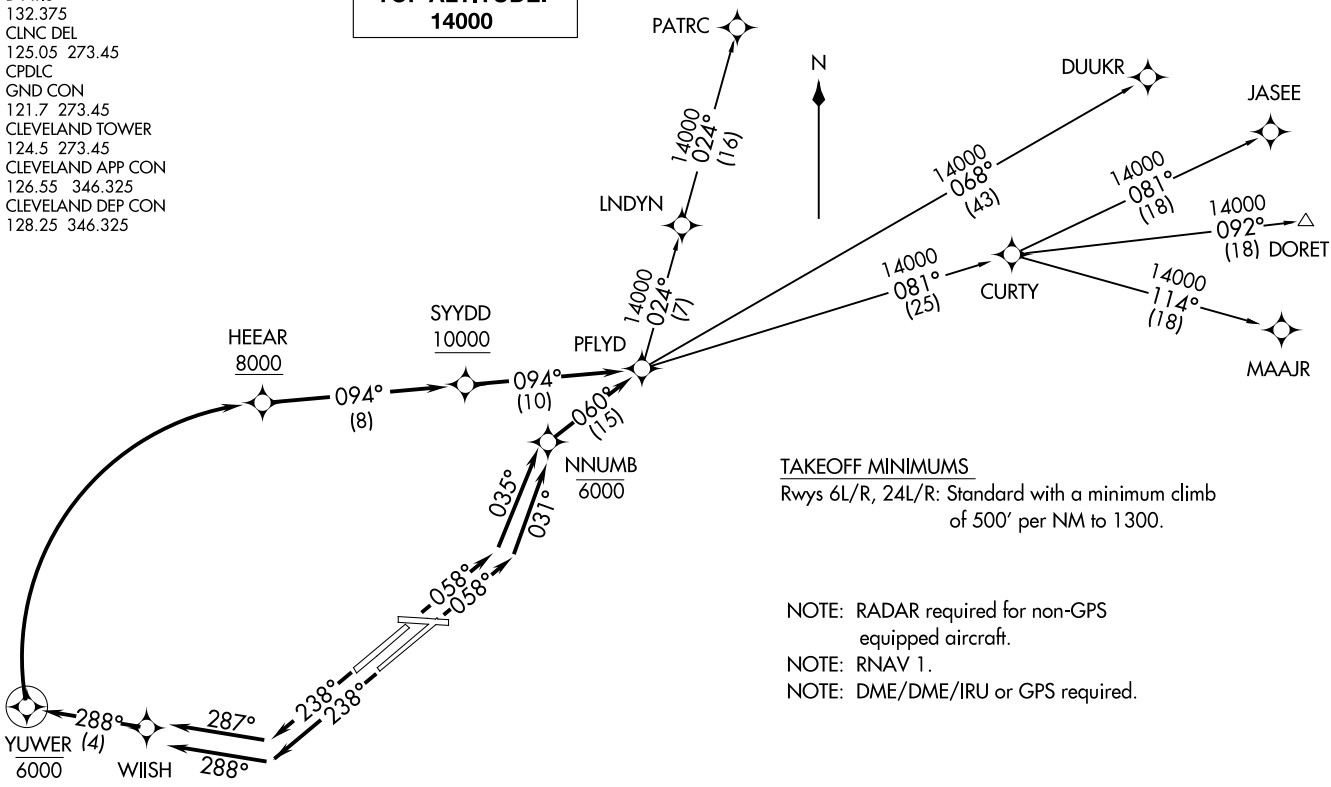


PFLYD ONE DEPARTURE (RNAV)
(PFLYD1.PFLYD) 19JUL18

CLEVELAND-HOPKINS INTL (CLE)
CLEVELAND, OHIO

D-ATIS
132.375
CLNC DEL
125.05 273.45
CPDLC
GND CON
121.7 273.45
CLEVELAND TOWER
124.5 273.45
CLEVELAND APP CON
126.55 346.325
CLEVELAND DEP CON
128.25 346.325

**TOP ALTITUDE:
14000**



TAKEOFF MINIMUMS
Rwys 6L/R, 24L/R: Standard with a minimum climb of 500' per NM to 1300.

- NOTE: RADAR required for non-GPS equipped aircraft.
- NOTE: RNAV 1.
- NOTE: DME/DME/IRU or GPS required.

NOTE: Chart not to scale.

(NARRATIVE ON FOLLOWING PAGE)

(PFLYD1.PFLYD) 22139
PFLYD ONE DEPARTURE (RNAV)

A-84 (FAA)
CLEVELAND-HOPKINS INTL (CLE)
CLEVELAND, OHIO

PFLYD ONE DEPARTURE (RNAV)



DEPARTURE ROUTE DESCRIPTION

TAKEOFF RUNWAY 06L: Climb on heading 058° to intercept course 035° to cross NNUMB at or below 6000, then on track 060° to PFLYD, thence....

TAKEOFF RUNWAY 06R: Climb on heading 058° to intercept course 031° to cross NNUMB at or below 6000, then on track 060° to PFLYD, thence....

TAKEOFF RUNWAY 24L: Climb on heading 238° to intercept course 288° to WIISH, then on track 288° to cross YUWER at or below 6000, then right turn direct to cross HEEAR at or above 8000, then on track 094° to cross SYYDD at or above 10000, then on track 094° to PFLYD, thence....

TAKEOFF RUNWAY 24R: Climb on heading 238° to intercept course 287° to WIISH, then on track 288° to cross YUWER at or below 6000, then right turn direct to cross HEEAR at or above 8000, then on track 094° to cross SYYDD at or above 10000, then on track 094° to PFLYD, thence....

....on (Transition). Maintain 14000, expect filed altitude ten minutes after departure.

DORET TRANSITION (PFLYD1.DORET)

DUUKR TRANSITION (PFLYD1.DUUKR)

JASEE TRANSITION (PFLYD1.JASEE)

MAAJR TRANSITION (PFLYD1.MAAJR)

PATRC TRANSITION (PFLYD1.PATRC)

EC-2, 11 JUL 2024 to 08 AUG 2024

EC-2, 11 JUL 2024 to 08 AUG 2024