

TOP ALTITUDE:
14000

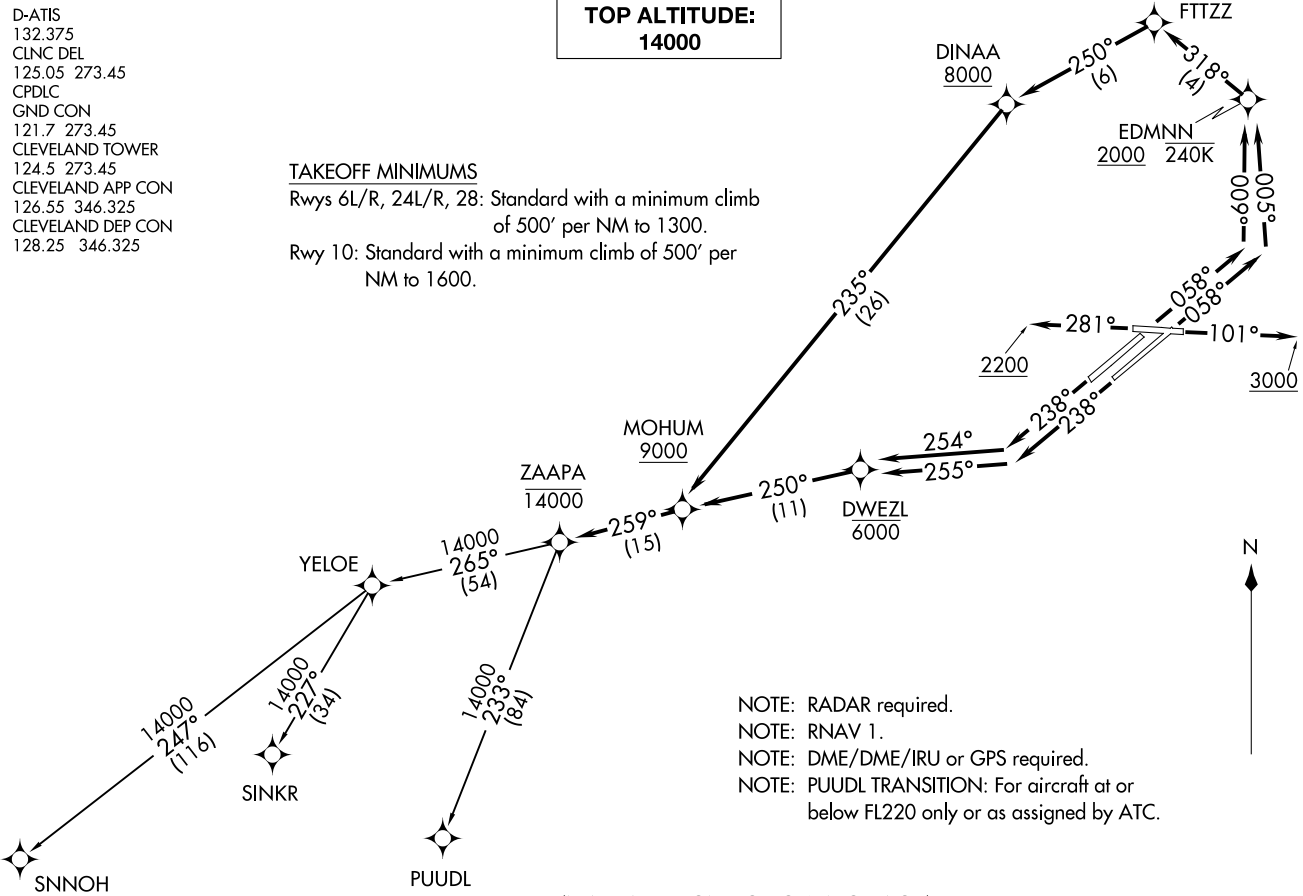
D-ATIS
132.375
CLNC DEL
125.05 273.45
CPDLC
GND CON
121.7 273.45
CLEVELAND TOWER
124.5 273.45
CLEVELAND APP CON
126.55 346.325
CLEVELAND DEP CON
128.25 346.325

TAKEOFF MINIMUMS

Rwys 6L/R, 24L/R, 28: Standard with a minimum climb of 500' per NM to 1300.
Rwy 10: Standard with a minimum climb of 500' per NM to 1600.

ZAAPA FIVE DEPARTURE (RNAV)
(ZAAPAS ZAAPA) 26MAR20

CLEVELAND, OHIO
CLEVELAND-HOPKINS INTL (CLE)



- NOTE: RADAR required.
- NOTE: RNAV 1.
- NOTE: DME/DME/IRU or GPS required.
- NOTE: PUUDL TRANSITION: For aircraft at or below FL220 only or as assigned by ATC.

(NARRATIVE ON FOLLOWING PAGE)

NOTE: Chart not to scale.

ZAAPA FIVE DEPARTURE (RNAV)
(ZAAPAS ZAAPA) 22139

CLEVELAND, OHIO
CLEVELAND-HOPKINS INTL (CLE)
A-84 (FAA)

ZAAPA FIVE DEPARTURE (RNAV)



DEPARTURE ROUTE DESCRIPTION

TAKEOFF RUNWAY 6L: Climb on heading 058° to intercept course 009° to cross EDMNN at or above 2000 and at or below 240K, then on track 318° to FTTZZ, then on track 250° to cross DINAA at or above 8000, then on track 235° to cross MOHUM at or above 9000, thence....

TAKEOFF RUNWAY 6R: Climb on heading 058° to intercept course 005° to cross EDMNN at or above 2000 and at or below 240K, then on track 318° to FTTZZ, then on track 250° to cross DINAA at or above 8000, then on track 235° to cross MOHUM at or above 9000, thence....

TAKEOFF RUNWAY 10: Climb on heading 101° to 3000, then as assigned by ATC for RADAR vectors to cross MOHUM at or above 9000, thence....

TAKEOFF RUNWAY 24L: Climb on heading 238° to intercept course 255° to cross DWEZL at or below 6000, then on track 250° to cross MOHUM at or above 9000, thence....

TAKEOFF RUNWAY 24R: Climb on heading 238° to intercept course 254° to cross DWEZL at or below 6000, then on track 250° to cross MOHUM at or above 9000, thence....

TAKEOFF RUNWAY 28: Climb on heading 281° to 2200, then as assigned by ATC for RADAR vectors to cross MOHUM at or above 9000, thence....

....on track 259° to cross ZAAPA at or below 14000, then on (transition). Maintain 14000 or as assigned by ATC, expect filed altitude ten minutes after departure.

PUUDL TRANSITION (ZAAPA5.PUUDL)

SINKR TRANSITION (ZAAPA5.SINKR)

SNNOH TRANSITION (ZAAPA5.SNNOH)

EC-2, 11 JUL 2024 to 08 AUG 2024

EC-2, 11 JUL 2024 to 08 AUG 2024