

COLUMBUS, MISSISSIPPI

# HI-ILS or LOC Z RWY 31C

LOC I-TBB <b>108.7</b>	APCH CRS <b>315°</b>	Rwy Ldg TDZE Arprt Elev	31C <b>12,004</b> <b>213</b> <b>218</b>	31R <b>8001</b> <b>218</b> <b>218</b>
---------------------------	-------------------------	-------------------------------	--	--

AL-91 [USAF]

COLUMBUS AFB (KCBM)

▼ \* When ALS inop, increase RVR to 40, vis to 3/4 mile.  
 \*\* When ALS inop, increase vis to 1 1/4 mile.  
 † When ALS inop, increase vis to 1 3/8 mile.



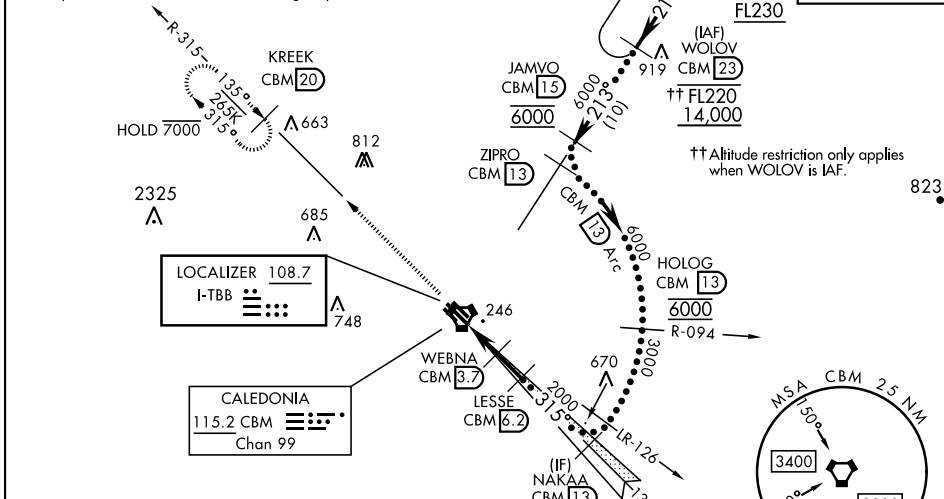
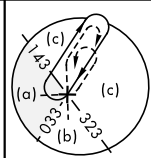
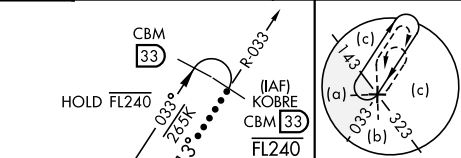
MISSED APPROACH: Climb heading 315° to intercept the VOR/TAC CBM R-315 outbound to KREEK (CBM R-315/20) and hold. Maintain 4000.

ATIS★ <b>115.2 273.5</b>	APP CON★ <b>126.075 239.25</b> (N) <b>134.55 350.3</b> (SE) <b>135.6 323.275</b> (SW)	TOWER★ <b>126.65 379.925</b>	GND CON★ <b>121.9 275.8</b>	CLNC DEL★ <b>269.55</b>
-----------------------------	--	---------------------------------	--------------------------------	----------------------------

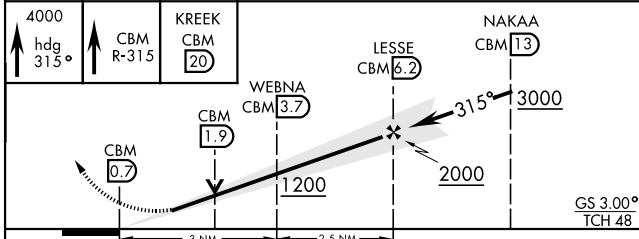
\*\*\* CAUTION:  
Rwy centerlines separated by 1450', sidestep not for civil use.

USAF Only: When VGSI inop, straight in Rwy 31R authorized at night with aircrew command approval. Visibility reduction by helicopters NA.

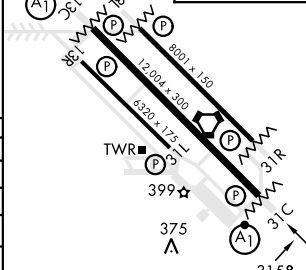
When sidestep/circling to Rwy 31R at night, operational VGSI required, remain on or above VGSI glidepath until threshold.



EMERG SAFE ALT 100 NM 3700



ELEV 218	TDZE 31C 213
	TDZE 31R 218



CATEGORY	C	D	E
S-ILS 31C*	413/24	200	(200-1/2)
S-LOC 31C**	640/40	427	(500-3/4)
SIDESTEP *** RWY 31R	640-1 1/4	422	(500-1/4)
CIRCLING	740-1 1/2 522 (600-1 1/2)	880-2 662 (700-2)	1240-3 1022 (1100-3)
LOCAL ALTIMETER, WITHOUT LAST STEPDOWN FIX			
S-LOC 31C †	720/55	507	(600-1)
SIDESTEP *** RWY 31R	760-1 1/8	542	(600-1/8)
CIRCLING	760-1 1/8 542 (600-1/8)	880-2 662 (700-2)	1240-3 1022 (1100-3)

MIRL Rwy 13R-31L					
MIRL Rwy 13C-31C, 13L-31R					
FAF to MAP 5.5 NM					
Knots	120	140	160	180	200
Min:Sec	2:45	2:21	2:04	1:50	1:39

COLUMBUS, MISSISSIPPI  
Amdt 2 21APR22

33°39'N-88°27'W

COLUMBUS AFB (KCBM)

# HI-ILS or LOC Z RWY 31C

SC-4, 11 JUL 2024 to 08 AUG 2024

SC-4, 11 JUL 2024 to 08 AUG 2024