

COLUMBUS, MISSISSIPPI

ILS or LOC Y RWY 31C

LOC I-TBB 108.7	APCH CRS 315°	Rwy Ldg TDZE Arprt Elev	31C 12,004 213 218	31R 8001 218 218
---------------------------	-------------------------	-------------------------------	--	--

AL-91 [USAF]

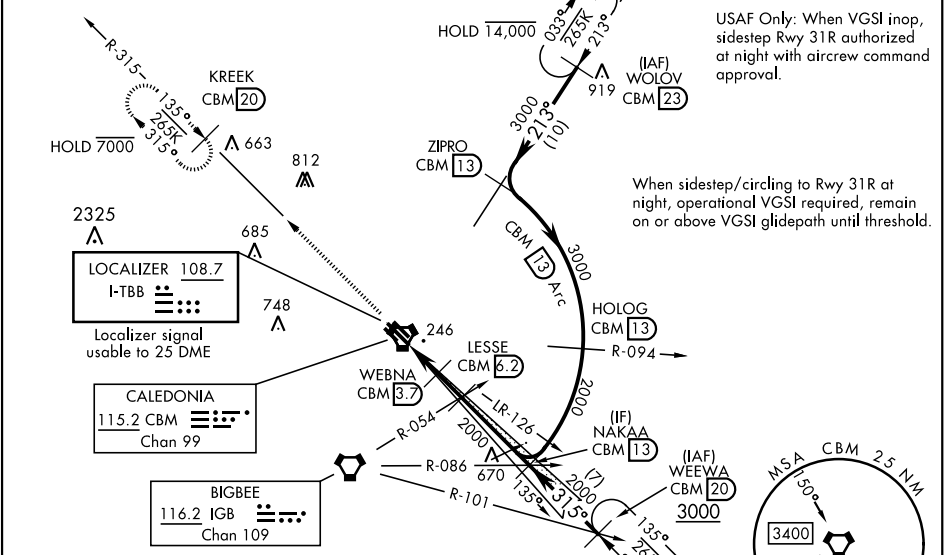
COLUMBUS AFB (KCBM)

▼ * When ALS inop, increase RVR to 40, vis to ¼ mile.
 ** When ALS inop, increase CAT AB RVR to 55, vis to 1 mile:
 CAT CDE vis to 1¼ miles.
 † When ALS inop, increase CAT AB RVR to 55, vis to 1 mile:
 CAT CDE vis to 1¾ miles.

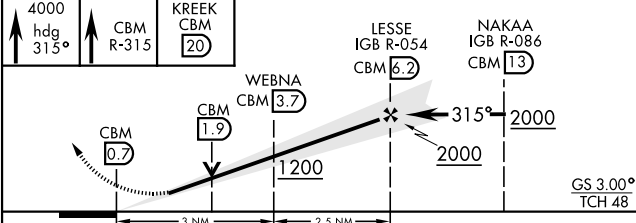
ALS-1
 MISSED APPROACH: Climb heading 315° to intercept the VOR/TAC CBM R-315 outbound to KREEK (CBM R-315/20) and hold. Maintain 4000.

ATIS★ 115.2 273.5	APP CON★ SE 134.55 350.3 SW 135.6 323.275 N 126.075 239.25	TOWER★ 126.65 379.925	GND CON★ 121.9 275.8	CLNC DEL★ 269.55
-----------------------------	--	---------------------------------	--------------------------------	----------------------------

*** CAUTION:
 Rwy centerlines separated by 1450', sidestep not for civil use.

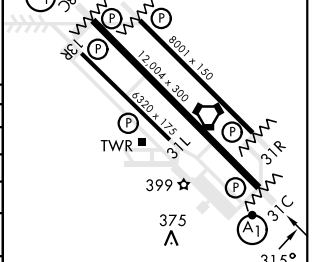


EMERG SAFE ALT 100 NM 3700



ELEV	218	TDZE 31C	213
		TDZE 31R	218

CATEGORY	A	B	C	D	E
S-ILS 31C**		413/24	200	(200-½)	
S-LOC 31C**	640/24	427 (500-½)	640/40	427 (500-¾)	
SIDESTEP RWY 31R***	640/55	422 (500-1)	640-1 ¼	422 (500-1¼)	
CIRCLING	700-1	720-1	740-1 ½	880-2	1240-3
	482 (500-1)	502 (600-1)	522 (600-1½)	662 (700-2)	1022(1100-3)
LOCAL ALTIMETER, WITHOUT LAST STEPDOWN FIX					
S-LOC 31C †	720/24	507 (600-½)	720/55	507 (600-1)	
SIDESTEP*** RWY 31R	760/55	542 (600-1)	760-1 ⅝	542 (600-1⅝)	
CIRCLING	760-1	542 (600-1)	760-1 ⅝	880-2	1240-3
			542 (600-1⅝)	662 (700-2)	1022(1100-3)



MIRL Rwy 13R-31L					
HIRL Rwy 13C-31C, 13L-31R					
FAF to MAP 5.5 NM					
Knots	60	90	120	150	180
Min:Sec	5:30	3:40	2:45	2:12	1:50

COLUMBUS, MISSISSIPPI
Amdt 2 23FEB23

33°39'N-88°27'W

COLUMBUS AFB (KCBM)

ILS or LOC Y RWY 31C

SC-4, 11 JUL 2024 to 08 AUG 2024

SC-4, 11 JUL 2024 to 08 AUG 2024