

COLUMBUS, MISSISSIPPI

TACAN RWY 31R

VORTAC CBM 115.2 Chan 99	APCH CRS 302°	Rwy Idg TDZE 218 Arprt Elev 218	AL-91 [USAF]	COLUMBUS AFB (KCBM)
--	-------------------------	---	--------------	---------------------

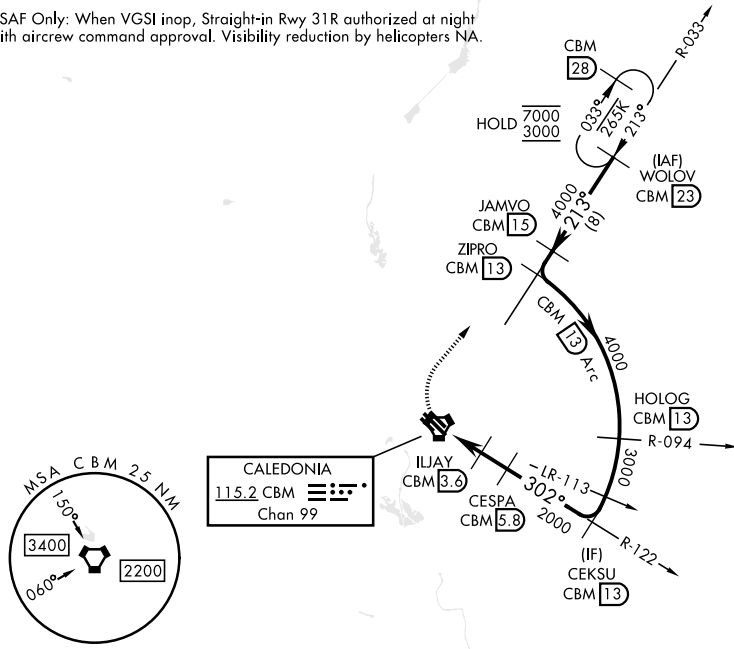
Missed approach requires use of RNAV or ATC RADAR monitoring. MISSED APPROACH: Climbing right turn to WOLOV and hold as published. Maintain 3000.

ATIS ★ 115.2 273.5	APP CON ★ 126.075 239.25 N 134.55 350.3 SE 135.6 323.275 SW	TOWER ★ 126.65 379.925	GND CON ★ 121.9 275.8	CLNC DEL ★ 269.55
------------------------------	---	----------------------------------	---------------------------------	-----------------------------

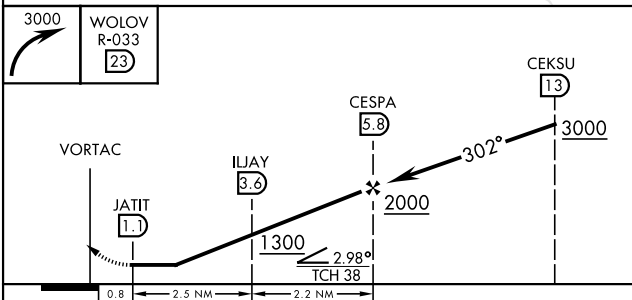
Straight-in Rwy 31R at Night, operational VGSI required, remain on or above VGSI glidepath until threshold.

USAF Only: When VGSI inop, Straight-in Rwy 31R authorized at night with aircrew command approval. Visibility reduction by helicopters NA.

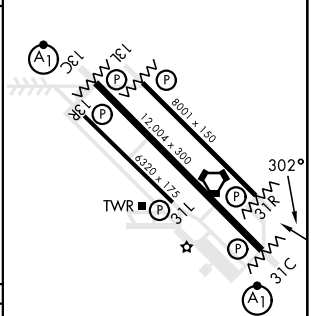
950



EMERG SAFE ALT 100 NM 3700



ELEV	218	TDZE	218
------	-----	------	-----



CATEGORY	A	B	C	D	E
S-31R	680/55	462 (500-1)	680-1 3/8	462 (500-1 3/8)	
CIRCLING	700-1 482 (500-1)	720-1 502 (600-1)	740-1 1/2 522 (600-1 1/2)	880-2 662 (700-2)	1240-3 1022 (1100-3)

MIRL Rwy 13R-31L
HIRL Rwy 13C-31C, 13L-31R

COLUMBUS, MISSISSIPPI 33° 39' N-88° 27' W COLUMBUS AFB (KCBM)

Amdt 1 21 APR 22

TACAN RWY 31R

SC-4, 11 JUL 2024 to 08 AUG 2024

SC-4, 11 JUL 2024 to 08 AUG 2024