

DAYTON, OHIO

ILS or LOC RWY 5L

| | | |
|---------------------------|-------------------------|---|
| LOC I-FAE 109.7 | APCH CRS 053° | Rwy Idg 12,600 TDZE 803 Arprt Elev 823 |
|---------------------------|-------------------------|---|

[USAF]

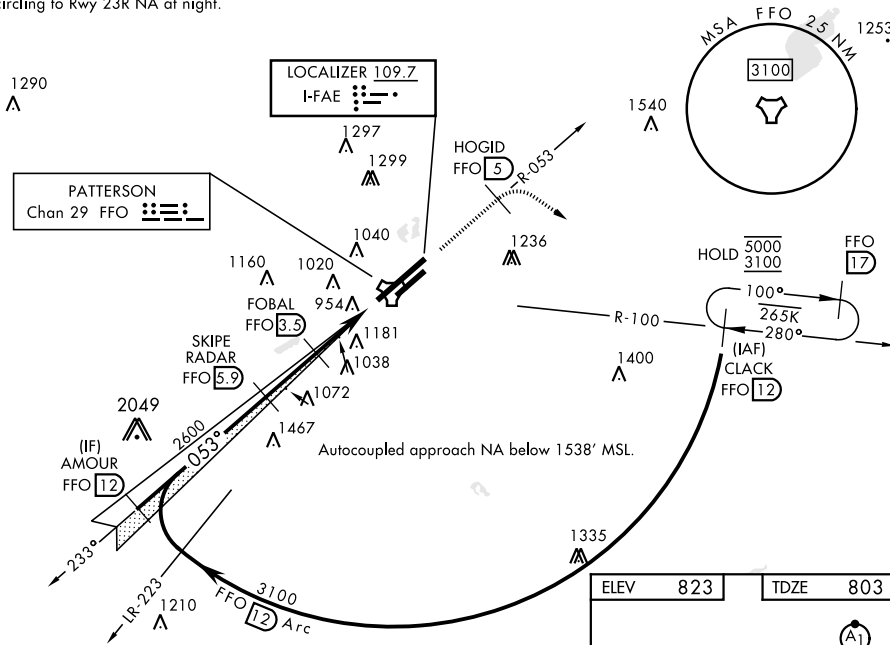
WRIGHT-PATTERSON AFB (KFFO)

DME or RADAR required for Localizer.
 * When ALS inop, increase RVR to 40 and vis to 3/4 mile.

ALS F-1 MISSED APPROACH: Climb to 2000 via FFO R-053 at 5 DME, turn right direct CLACK climbing to 3100 and hold.

| | | | |
|------------------------------|---|--|-------------------------------|
| ATIS 124.475 269.9 | COLUMBUS APP CON 118.85 269.275 | PATTERSON TOWER 126.9 281.45 | GND CON 121.8 335.8 |
|------------------------------|---|--|-------------------------------|

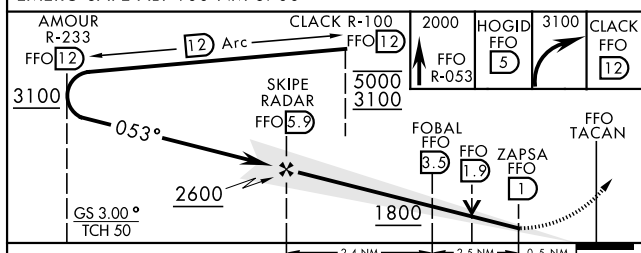
** When ALS inop, increase CAT AB RVR to 55 and vis to 1 mile, CAT CDE vis to 1 1/2 miles.
 *** When Rwy 23R VGSi inop, circling to Rwy 23R NA at night.
 † Missed approach requires use of RNAV or ATC RADAR monitoring.



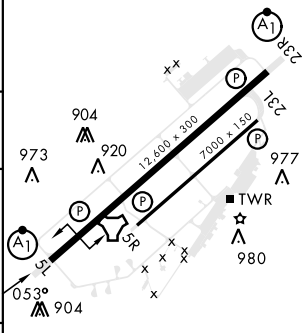
EC-2, 11 JUL 2024 to 08 AUG 2024

EC-2, 11 JUL 2024 to 08 AUG 2024

EMERG SAFE ALT 100 NM 3700



| | |
|----------|----------|
| ELEV 823 | TDZE 803 |
|----------|----------|



| CATEGORY | A | B | C | D | E |
|-------------|-----------------------|-----------------------|-----------------------|-------------------------------|-------------------------------|
| S-ILS 5L* | 1003/24 | | 200 | (200-1/2) | |
| S-LOC 5L** | 1280/24 | 476 (500-1/2) | 1280/50 | 476 (500-1) | |
| CIRCLING*** | 1380-1 557 (600-1) | 1440-1 617 (700-1) | 1560-2 737 (800-2) | 1620-2 1/2 797 (800-2 1/2) | 1620-2 3/4 797 (800-2 3/4) |

| | |
|-------------------|--------------------------|
| HIRL Rwy 5L-23R | 1038 |
| MIRL Rwy 5R-23L | ▲ |
| FAF to MAP 4.9 NM | |
| Knots | 60 90 120 150 180 |
| Min:Sec | 4:54 3:16 2:27 1:58 1:38 |

DAYTON, OHIO
Amdt 4 28DEC23

39° 50'N-84° 03'W

WRIGHT-PATTERSON AFB (KFFO)

ILS or LOC RWY 5L