

DEL RIO, TEXAS

HI-ILS or LOC/DME Z RWY 31C

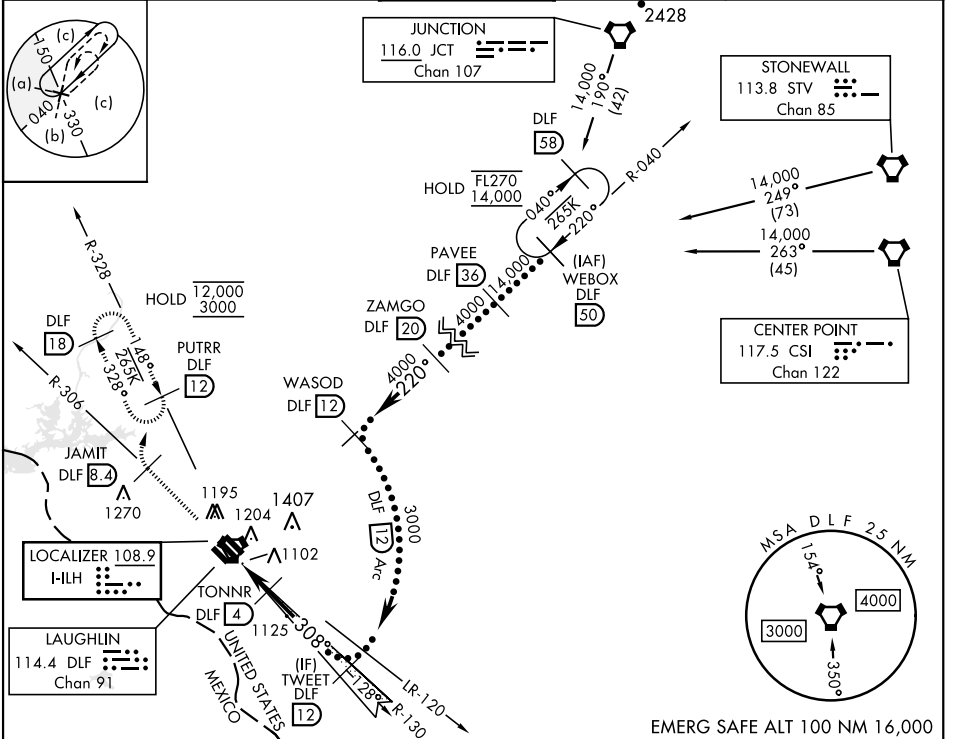
LOC HI-LH 108.9	APCH CRS 308°	Rwy Idg 31C 8852 31L 6282 31R 8316
		TDZE 1079 1080 1078
		Arpt Elev 1082

AL-111 [USAF]

LAUGHLIN AFB (KDLF)

* Circling not authorized in sector SW of Rwy 13R-31L. MISSED APPROACH: Climb to 3000 on DLF VORTAC R-306 to 8.4 DME (JAMIT), then turn right to intercept DLF R-328 to 12 DME (PUTRR) and hold.

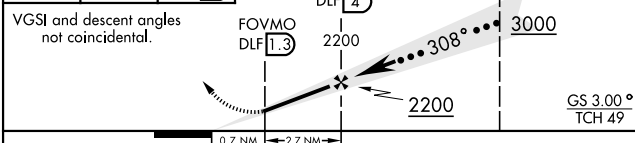
ATIS ★ 114.4 269.9	DEL RIO APP CON 119.6 259.1	TOWER ★ 125.2 307.375	GND CON 275.8	CLNC DEL 120.5 335.8
------------------------------	---------------------------------------	---------------------------------	-------------------------	--------------------------------



SC-3, 11 JUL 2024 to 08 AUG 2024

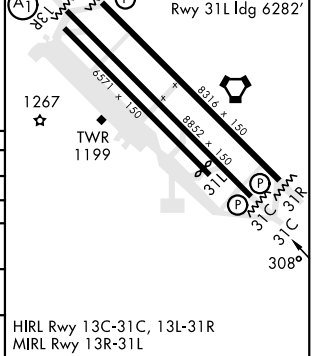
SC-3, 11 JUL 2024 to 08 AUG 2024

3000 DLF R-306	JAMIT DLF 8.4	PUTRR DLF 12	TONNR DLF 4	TWEET DLF 12
----------------	---------------	--------------	-------------	--------------



ELEV 1082	TDZE 31C 1079
	TDZE 31L 1080
	TDZE 31R 1078

Rwy 31L Idg 6282'



CATEGORY	A	B	C	D	E
S-ILS 31C		1279-3/4	200	(200-3/4)	
S-LOC 31C	1360-1	281 (300-1)		1360-7/8	281 (300-7/8)
SIDESTEP 31L	1360-1	280 (300-1)	1360-1 1/2 280 (300-1 1/2)	1360-2	280 (300-2)
SIDESTEP 31R	1380-1	302 (300-1)	1380-1 1/2 302 (300-1 1/2)	1380-2	302 (300-2)
CIRCLING*	1500-1 418 (500-1)	1540-1 458 (500-1)	1700-1 1/4 618(700-1 1/4)	1700-2 618 (700-2)	1740-2 1/4 658(700-2 1/4)

DEL RIO, TEXAS
Amdt 6 05OCT23

29°22'N-100°47'W

LAUGHLIN AFB (KDLF)

HI-ILS or LOC/DME Z RWY 31C