

DEL RIO, TEXAS

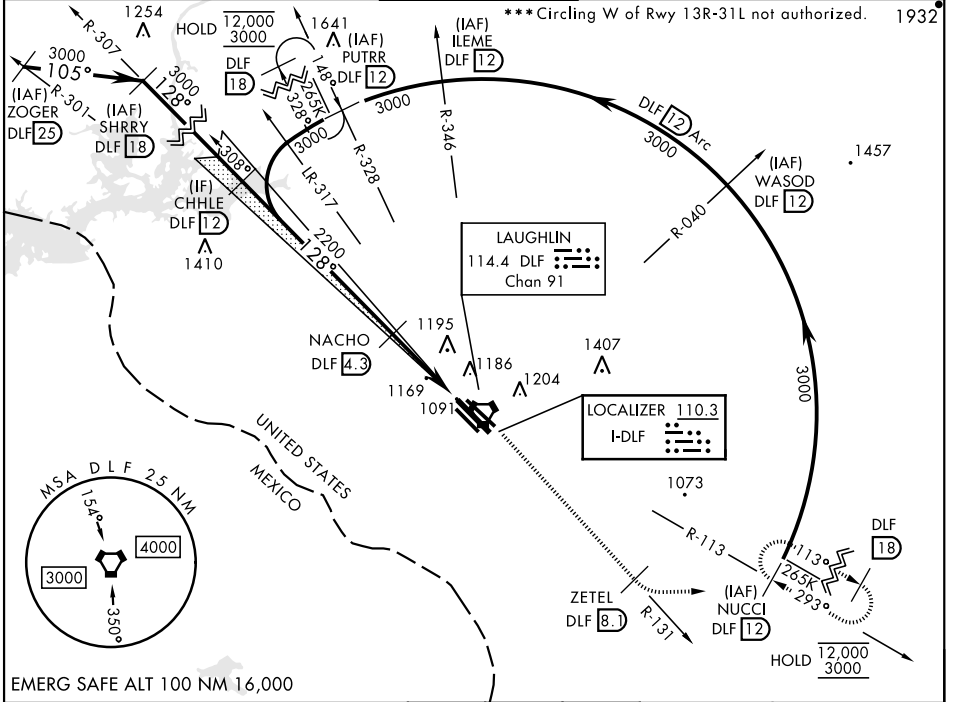
# ILS or LOC/DME Y RWY 13C

LOC I-DLF <b>110.3</b>	APCH CRS <b>128°</b>	Rwy Idg <b>8852 8316 6571</b>	13C <b>1082</b>	13L <b>1078</b>	13R <b>1077</b>
		TDZE <b>1082</b>	Arprt Elev <b>1082</b>		

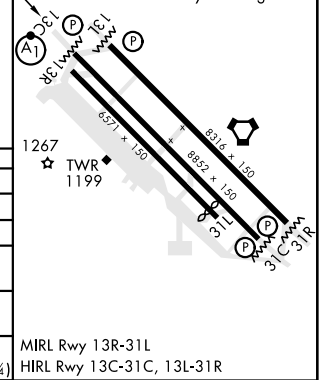
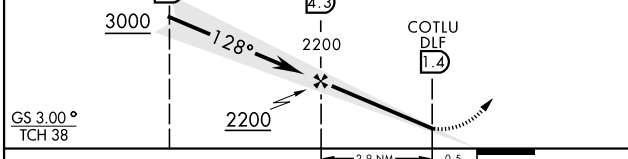
AL-111 (USAF) LAUGHLIN AFB (KDLF)

**ALSF-1** MISSED APPROACH: Climb to 3000 on DLF VORTAC R-131 to 8.1 DME (ZETEL), then turn left to intercept DLF R-113 to 12 DME (NUCCI) and hold.

ATIS ★ <b>114.4 269.9</b>	DEL RIO APP CON <b>119.6 259.1</b>	TOWER ★ <b>125.2 307.375</b>	GND CON <b>275.8</b>	CLNC DEL <b>120.5 335.8</b>
------------------------------	---------------------------------------	---------------------------------	-------------------------	--------------------------------



CHHLE DLF 12	NACHO DLF 4.3	COTLU DLF 1.4	ZETEL DLF 8.1	NUCCI R-113 DLF 12	ELEV 1082	TDZE 13C 1082	TDZE 13L 1078	TDZE 13R 1077
					Rwy 31L Idg 6282'			



CATEGORY	A	B	C	D	E
S-ILS 13C*	1282/24		200	(200-½)	
S-LOC 13C**	1420/24	338 (400-½)	1420/26	338	(400-½)
SIDESTEP 13L	1440-1 362 (400-1)	1440-1½ 362(400-1½)		1440-2 362 (400-2)	
SIDESTEP 13R	1480-1 403 (400-1)	1480-1½ 403(400-1½)		1480-2 403 (400-2)	
CIRCLING ***	1500-1 418 (500-1)	1540-1 458 (500-1)	1700-1¾ 618(700-1¾)	1700-2 618 (700-2)	1740-2¼ 658 (700-2¼)

DEL RIO, TEXAS 29°22'N-100°47'W LAUGHLIN AFB (KDLF)

Amtd 6 05OCT23

# ILS or LOC/DME Y RWY 13C

SC-3, 11 JUL 2024 to 08 AUG 2024

SC-3, 11 JUL 2024 to 08 AUG 2024