

# RNAV (GPS) RWY 13C

APCH CRS <b>128°</b>	Rwy Idg	<b>8852</b>	<b>8316</b>	<b>6571</b>
	TDZE	<b>1082</b>	<b>1078</b>	<b>1077</b>
	Arprt Elev	<b>1082</b>		

AL-111 (USAF)

LAUGHLIN AFB (KDLF)

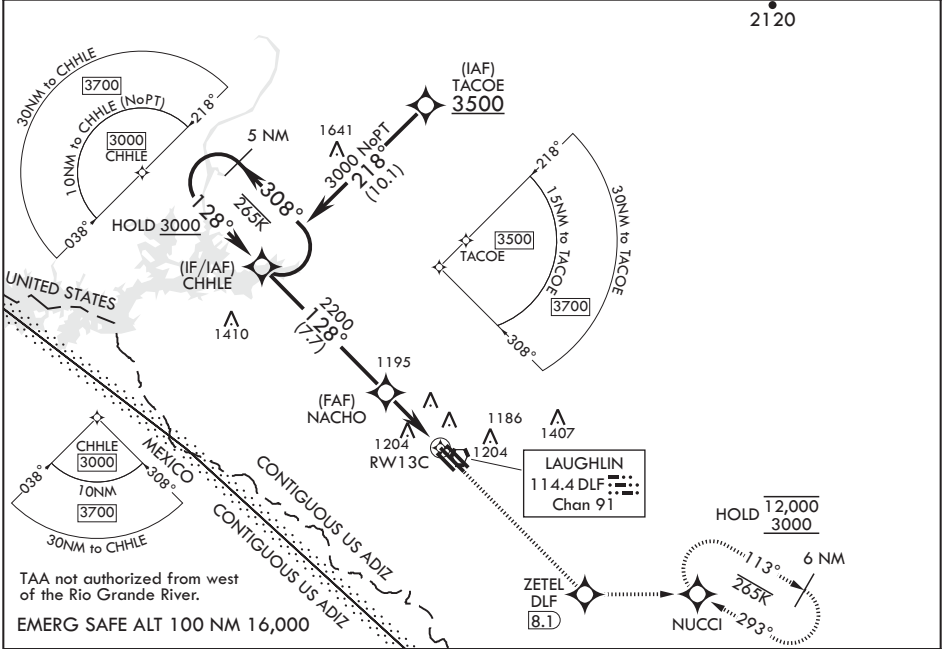
RNP APCH - GPS



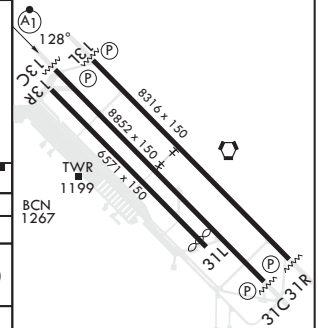
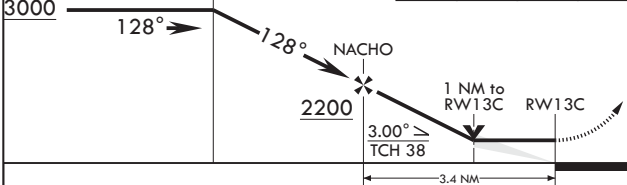
MISSED APPROACH: Climb to 3000 direct ZETEL, then track 083° to NUCCI and hold.

**⚠** \* When ALS inop, increase CAT AB RVR to 55 and vis to 1 mile, CAT CDE vis to 1 1/4 miles.  
 \*\* Circling SW of Rwy 13R-31L not authorized.

ATIS ★ <b>114.4 269.9</b>	DEL RIO APP CON <b>119.6 259.1</b>	TOWER ★ <b>125.2 307.375</b>	GND CON <b>275.8</b>	CLNC DEL <b>120.5 335.8</b>
------------------------------	---------------------------------------	---------------------------------	-------------------------	--------------------------------



5 NM Holding Pattern CHHLE 3000 128° 308°	3000	ZETEL	tr 083°	NUCCI	ELEV 1082	TDZE 13C 1082 TDZE 13L 1078 TDZE 13R 1077
---	------	-------	---------	-------	-----------	---



CATEGORY	A	B	C	D	E
LNAV MDA*	1440/24 358 (400-½)		1440/30 358 (400-¾)		
SIDESTEP 13L	1440-1 362 (400-1)		1440-1½ 362 (400-1½)	1440-2 362 (400-2)	
SIDESTEP 13R	1480-1 403 (400-1)		1480-1½ 403 (400-1½)	1480-2 403 (400-2)	
<b>Ⓢ</b> CIRCLING**	1500-1 418 (500-1) 1540-1 458 (500-1)		1700-1¾ 618 (700-1¾)	1700-2 618 (700-2)	1740-2¼ 658 (700-2¼)

Rwy 31L Idg 6282'  
 MIRL Rwy 13R-31L  
 HIRL Rws 13C-31C, 13L-31R

# RNAV (GPS) RWY 13C

SC-3, 11 JUL 2024 to 08 AUG 2024

SC-3, 11 JUL 2024 to 08 AUG 2024