

RNAV (GPS) RWY 31C

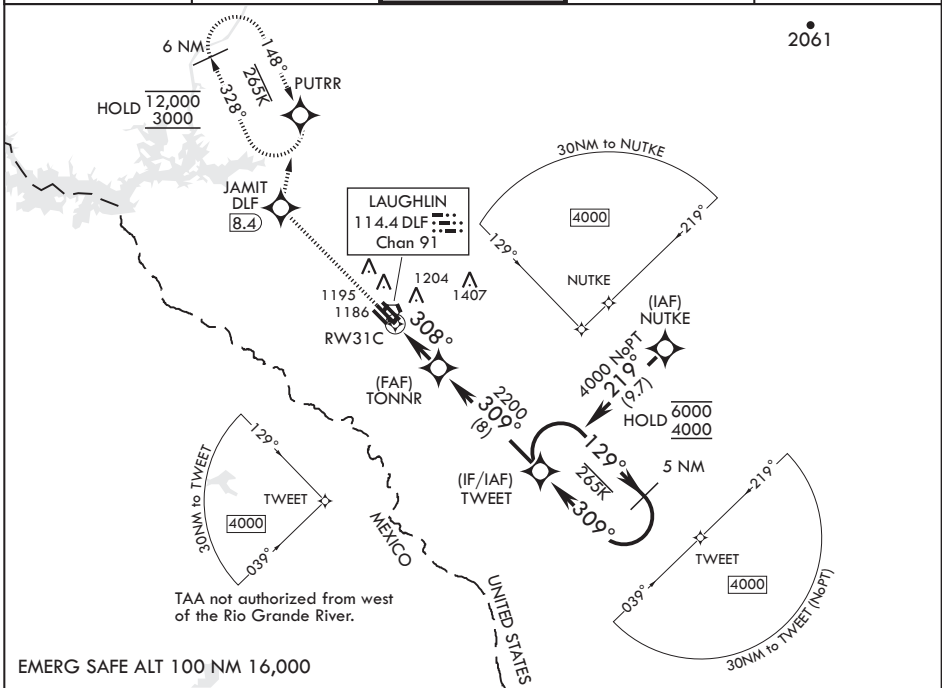
APCH CRS 308°	Rwy Idg 8852 6282 8316	31C	31L	31R
	TDZE 1079 1080 1078			
	Arprt Elev 1082			

AL-111 (USAF)

LAUGHLIN AFB (KDLF)

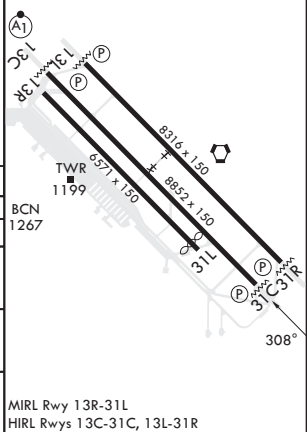
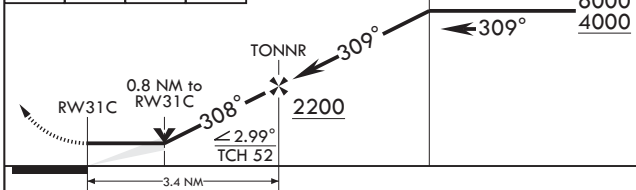
RNP APCH - GPS	MISSED APPROACH: Climb to 3000 direct JAMIT, then track 005° to PUTRR and hold.
<p>▼ * Circling not authorized SW of Rwy 13R-31L.</p>	

ATIS* 114.4 269.9	DEL RIO APP CON 119.6 259.1	TOWER* 125.2 307.375	GND CON 275.8	CLNC DEL 120.5 335.8
-----------------------------	---------------------------------------	--------------------------------	-------------------------	--------------------------------



EMERG SAFE ALT 100 NM 16,000

3000	JAMIT	tr 005°	PUTRR	ELEV 1082	TDZE 31C 1079
				Rwy 31L Idg 6282'	TDZE 31L 1080
					TDZE 31R 1078



CATEGORY	A	B	C	D	E
LNAV MDA	1380-1 301 (300-1)		1380-7/8 301 (300-7/8)		
SIDESTEP 31R	1380-1 302 (300-1)		1380-1 1/2 302 (300-1 1/2)	1380-2 302 (300-2)	
SIDESTEP 31L	1420-1 340 (400-1)		1420-1 1/2 340 (400-1 1/2)	1420-2 340 (400-2)	
C CIRCLING*	1500-1 418 (500-1)	1540-1 458 (500-1)	1700-1 1/4 618 (700-1 1/4)	1700-2 618 (700-2)	1740-2 1/4 658 (700-2 1/4)

RNAV (GPS) RWY 31C

SC-3, 11 JUL 2024 to 08 AUG 2024