

DEL RIO, TEXAS

VOR/DME RWY 31C

VORTAC DLF 114.4 Chan 91	APCH CRS 322°	Rwy Idg 8852 TDZE 1079 Arprt Elev 1082
--	-------------------------	---

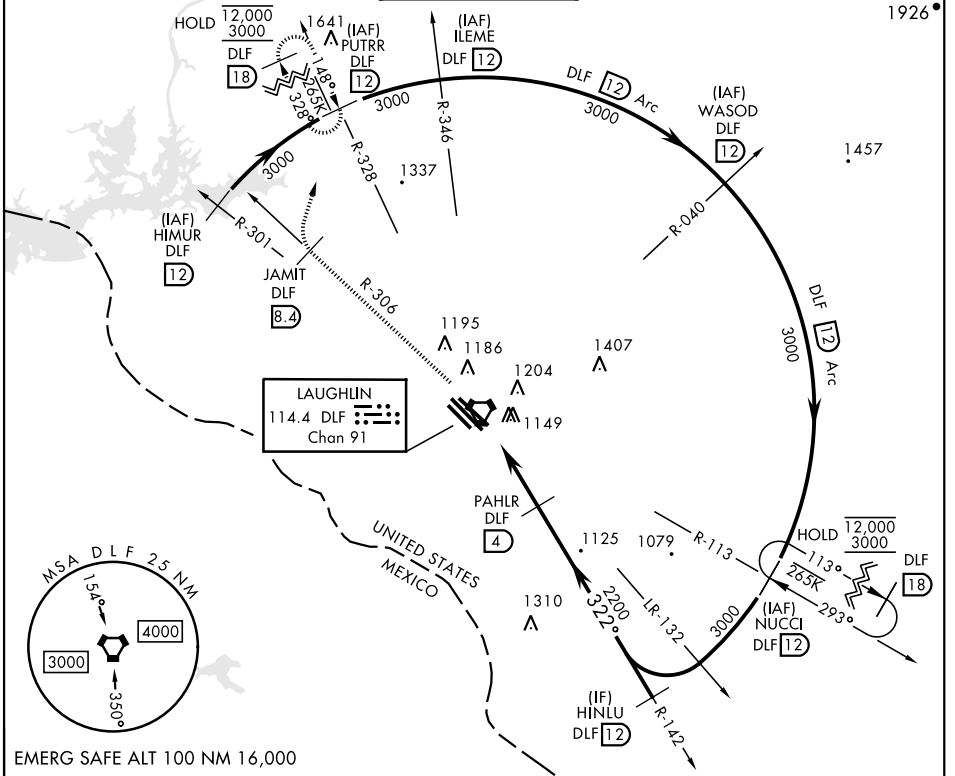
AL-111 [USAF]

LAUGHLIN AFB (KDLF)

⚠ *Circling not authorized in sector SW of Rwy 13R-31L.

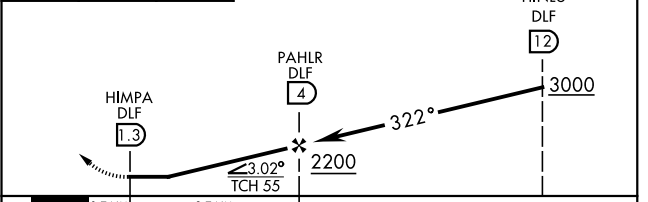
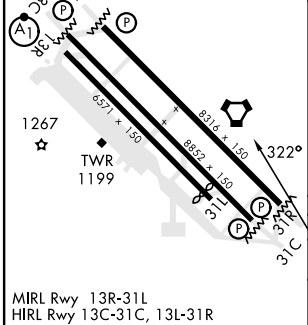
MISSED APPROACH: Climb to 3000 on DLF VORTAC R-306 to 8.4 DME (JAMIT), then turn right to intercept DLF R-328 to 12 DME (PUTRR), and hold.

ATIS ★ 114.4 269.9	DEL RIO APP CON 119.6 259.1	TOWER ★ 125.2 307.375	GND CON 275.8	CLNC DEL 120.5 335.8
------------------------------	---------------------------------------	---------------------------------	-------------------------	--------------------------------



EMERG SAFE ALT 100 NM 16,000

ELEV 1082	TDZE 1079 Rwy 31L Idg 6282'	3000	JAMIT R-306 DLF 8.4	PUTRR R-328 DLF 12
-----------	--------------------------------	------	---------------------	--------------------



CATEGORY	A	B	C	D	E
S-31C	1420-1		341	(400-1)	
C CIRCLING*	1500-1 418 (500-1)	1540-1 458 (500-1)	1700-1½ 618(700-1¾)	1700-2 618 (700-2)	1740-2¼ 658(700-2¼)

DEL RIO, TEXAS
Amdt 4 20APR23

29°22'N-100°47'W

LAUGHLIN AFB (KDLF)

VOR/DME RWY 31C

SC-3, 11 JUL 2024 to 08 AUG 2024

SC-3, 11 JUL 2024 to 08 AUG 2024