

APP CRS <b>355°</b>	Rwy Idg TDZE Apt Elev	<b>5494</b> <b>197</b> <b>202</b>
------------------------	-----------------------------	---

# RNAV (GPS) RWY 36

BEAUREGARD RGNL (DRI)

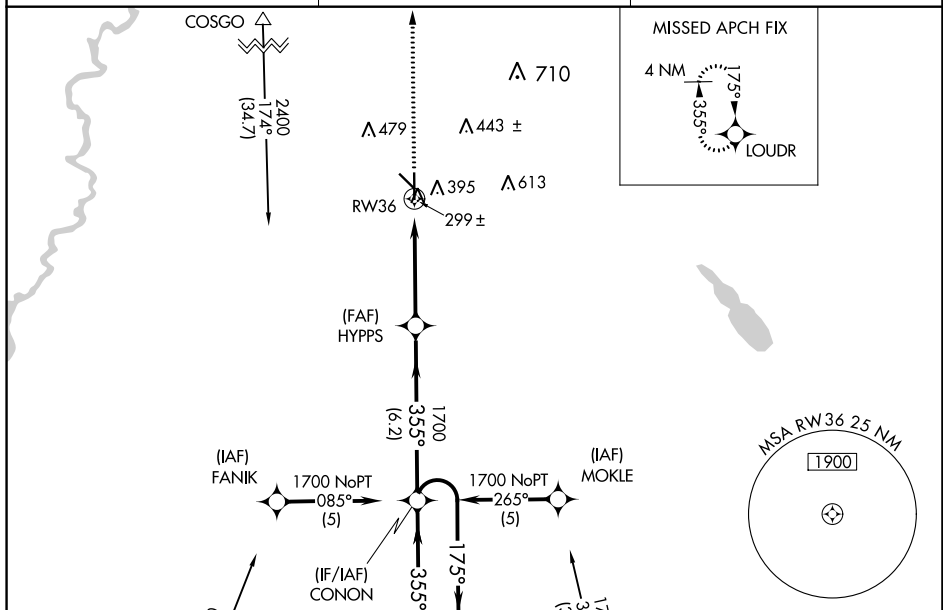
**⚠** Inoperative table does not apply. For uncompensated Baro-VNAV systems, LNAV/VNAV NA below -15°C (5°F) or above 48°C (118°F). DME/DME RNP-0.3 NA. Visibility reduction by helicopters NA. When local altimeter setting not received, use Fort Polk altimeter setting and increase LNAV/LNAV DA to 622 feet and visibility all Cats ¼ SM; increase all MDAs 60 feet and visibility LNAV Cats C/D and Circling Cats C/D ¼ SM.

ODALS

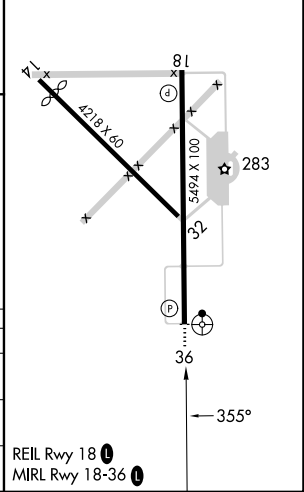
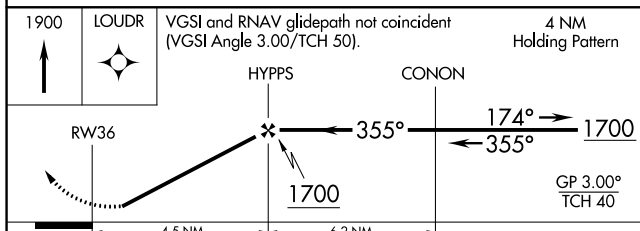


MISSED APPROACH:  
Climb to 1900 direct LOUDR and hold.

AWOS-3PT <b>118.225</b>	POLK APP CON <b>123.7 261.3</b>	UNICOM <b>122.8 (CTAF)</b>
----------------------------	------------------------------------	-------------------------------



ELEV 202	TDZE 197
----------	----------



CATEGORY	A	B	C	D
LNAV/VNAV DA	569-1¼		372 (400-1¼)	
LNAV MDA	660-1	463 (500-1)	660-1¼ 463 (500-1¼)	660-1½ 463 (500-1½)
CIRCLING	720-1	518 (600-1)	780-1½ 578 (600-1½)	1000-2½ 798 (800-2½)

SC-4, 11 JUL 2024 to 08 AUG 2024

SC-4, 11 JUL 2024 to 08 AUG 2024