

APP CRS	Rwy Idg	<b>4347</b>
<b>032°</b>	TDZE	<b>1972</b>
	Apt Elev	<b>1987</b>

# RNAV (GPS) RWY 5

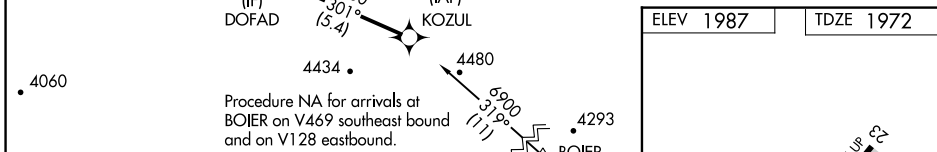
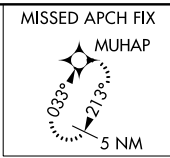
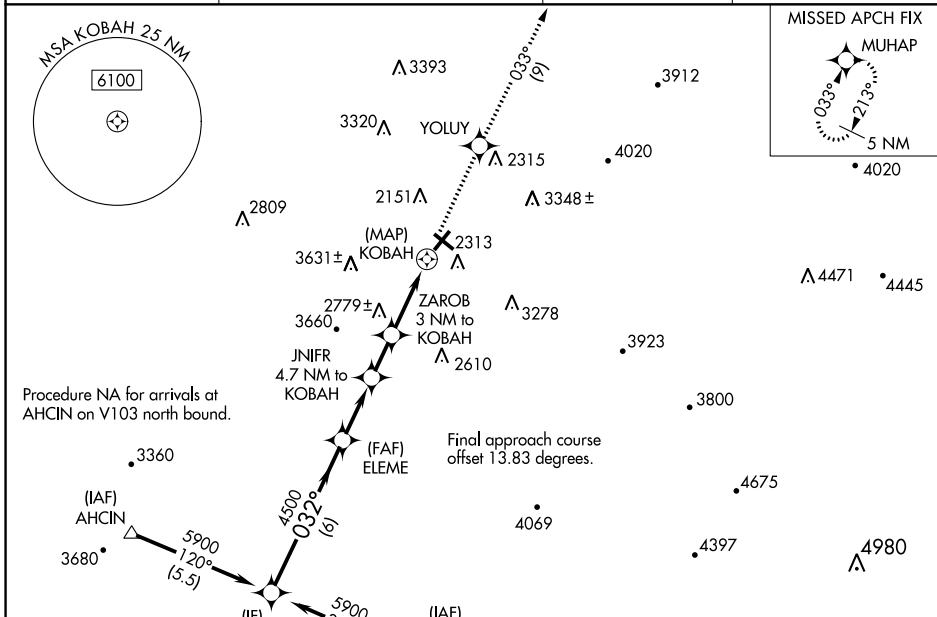
ELKINS/RANDOLPH COUNTY (JENNINGS RANDOLPH FLD) (EKN)

RNP APCH.

**⚠** Circling Rwy 14, 23, 32 NA at night. When local altimeter setting not received, use Buckhannon altimeter setting and increase all MDA 100 feet.  
**⚠** Straight-in minimums NA when using Buckhannon altimeter setting.  
**⚠** Rwy 5 helicopter visibility reduction below 3/4 SM NA.

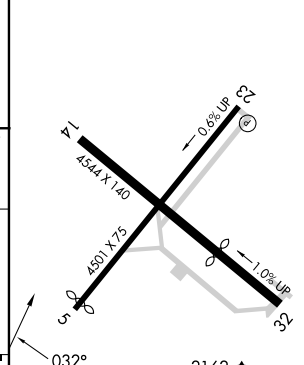
**MISSED APPROACH:** Climb to 5500 direct YOLUY and on track 033° to MUHAP and hold.

ASOS <b>119.275</b>	CLARKSBURG APP CON ★ <b>121.15 284.65</b>	CTAF <b>123.6</b>	<b>122.9 0</b>
------------------------	--	----------------------	----------------



* 3800 when using Buckhannon altimeter setting. ** 3460 when using Buckhannon altimeter setting.	5500	YOLUY	tr	MUHAP
DOFAD	↑	⬠	033°	⬠
5900	ELEME	JNIFR	ZAROB	KOBAH
032°	4.7 NM to KOBAH	3 NM to KOBAH	3.62°	TCH 50
4500	*3700	**3360		
6 NM	2.5 NM	1.7 NM	3 NM	0.5

ELEV 1987	TDZE 1972
-----------	-----------



CATEGORY	A	B	C	D
LNVA MDA	3040-1 1/4 1068 (1100-1 1/4)	3040-1 1/2 1068 (1100-1 1/2)	3040-3 1068 (1100-3)	NA
CIRCLING	3040-1 1/4 1053 (1100-1 1/4)	3140-1 1/2 1153 (1200-1 1/2)	3720-3 1733 (1800-3)	4020-3 2033 (2100-3)

REIL Rwy 23 0  
MIRL Rwy 5-23 0

# RNAV (GPS) RWY 5

NE-4, 11 JUL 2024 to 08 AUG 2024

NE-4, 11 JUL 2024 to 08 AUG 2024