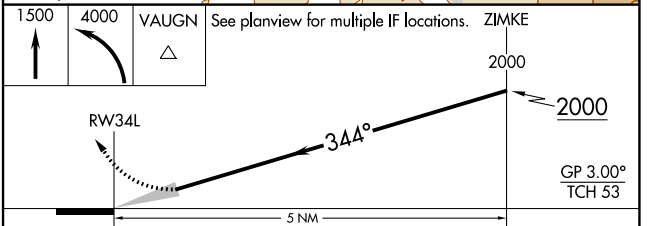
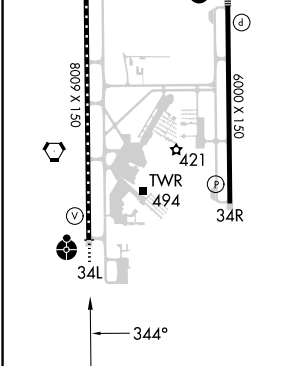
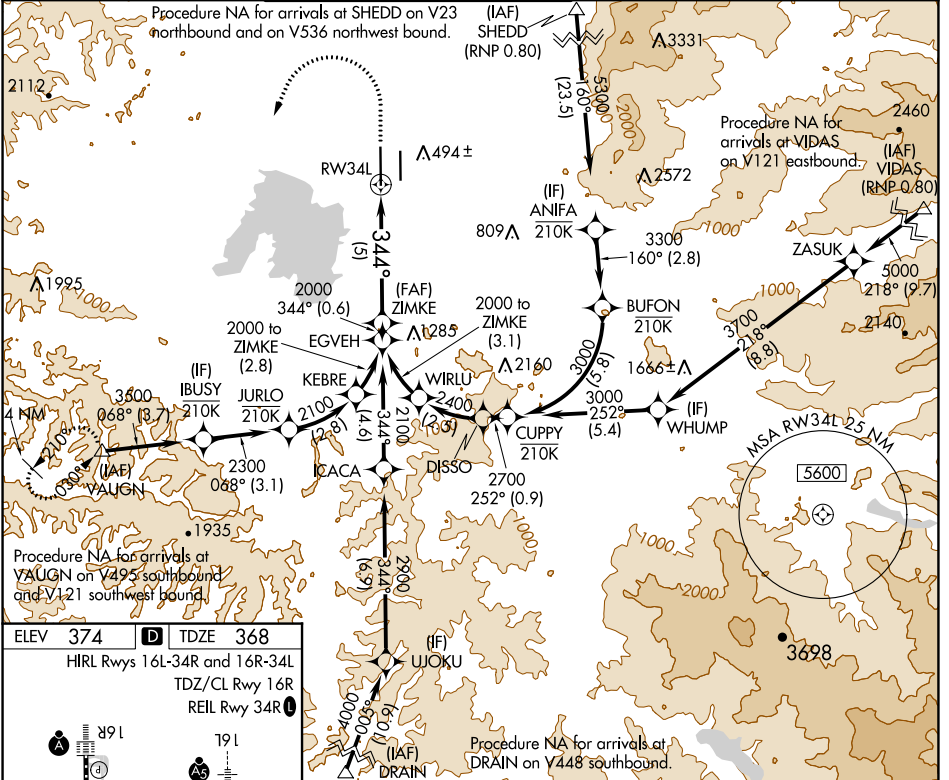


APP CRS	Rwy Idg	8009
344°	TDZE	368
	Apt Elev	374

RNAV (RNP) Z RWY 34L

MAHLON SWEET FLD (EUG)

RNP AR APCH - GPS.		ODALS	MISSED APPROACH: Climb to 1500, then climbing left turn to 4000 direct VAUGN and hold.		
<p>Simultaneous approach authorized. For uncompensated Baro-VNAV systems, procedure NA below -6°C or above 54°C. For inop ALS, increase RNP 0.20 all Cats visibility to RVR 5500; increase RNP 0.30 Cats A, B visibility to RVR 6000.</p>					
ATIS	CASCADE APP CON*	EUGENE TOWER*	GND CON	CLNC DEL	UNICOM
125.225	119.6 348.7	118.9 (CTAF) 0 371.9 (Rwy 16R/34L) 124.15 371.9 (Rwy 16L/34R)	121.7 269.5	121.7 269.5	122.95



CATEGORY	A	B	C	D
RNP 0.20 DA		720/45	352 (400-7%)	
RNP 0.30 DA		761/50	393 (400-1)	

AUTHORIZATION REQUIRED

NW-1, 11 JUL 2024 to 08 AUG 2024

NW-1, 11 JUL 2024 to 08 AUG 2024