

RNAV (GPS) RWY 15

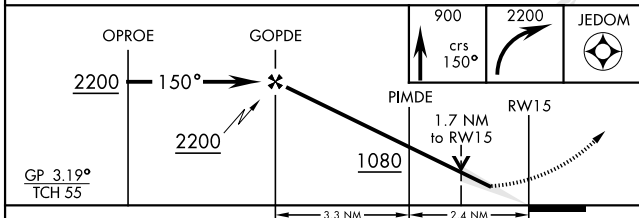
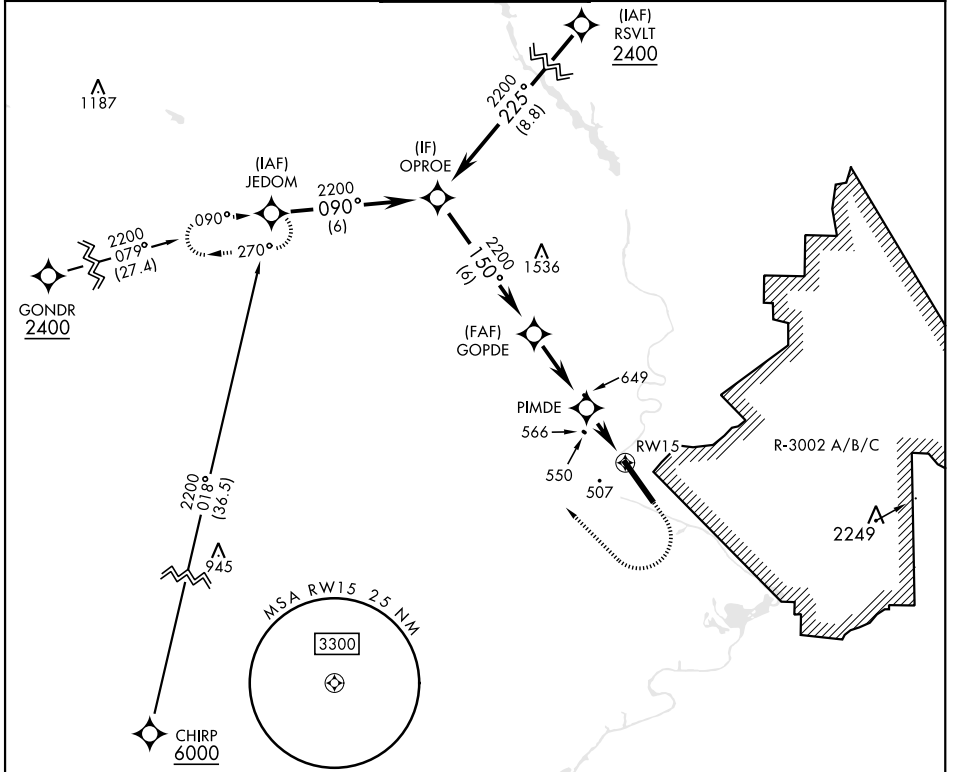
WAAS CH 41028 W15A	APCH CRS 150°	Rwy Idg 10,002 TDZE 226 Arpt Elev 227
--	-------------------------	--

[USA]

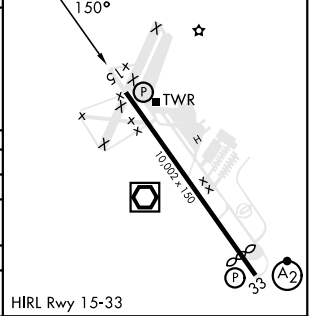
LAWSON AAF (KLSF)

RNP APCH-GPS	MISSED APPROACH: Climb to 900 then climbing right turn to 2200 direct JEDOM and hold.
<p>▼ *Circling not authorized NE of Rwy 15-33. NA when tower closed. For uncompensated Baro-VNAV systems, LNAV/VNAV below -15°C or above 54°C.</p>	

ATIS ★ 134.375	ATLANTA APP CON 125.5 323.1	TOWER 119.05 (CTAF) 269.525	GND CON 121.7 254.25	CLNC DEL 121.7 251.15
--------------------------	---------------------------------------	---------------------------------------	--------------------------------	---------------------------------



ELEV 227	TDZE 226
Rwy 33 Idg 9302'	



CATEGORY	A	B	C	D
LPV DA	494-7/8	267	(300-7/8)	
LNAV/VNAV DA	820-1 3/4	593	(600-1 3/4)	
LNAV MDA	820-1	593 (600-1)	820-1 3/4	593 (600-1 3/4)
CIRCLING	820-1	860-1	960-2	1080-2 3/4
	593 (600-1)	633 (700-1)	733 (800-2)	853 (900-2 3/4)

FORT MOORE, GEORGIA 32° 20'N-85° 00'W LAWSON AAF (KLSF)

Amdt 1 28DEC23

RNAV (GPS) RWY 15

SE-4, 11 JUL 2024 to 08 AUG 2024

SE-4, 11 JUL 2024 to 08 AUG 2024