

TACAN RWY 23

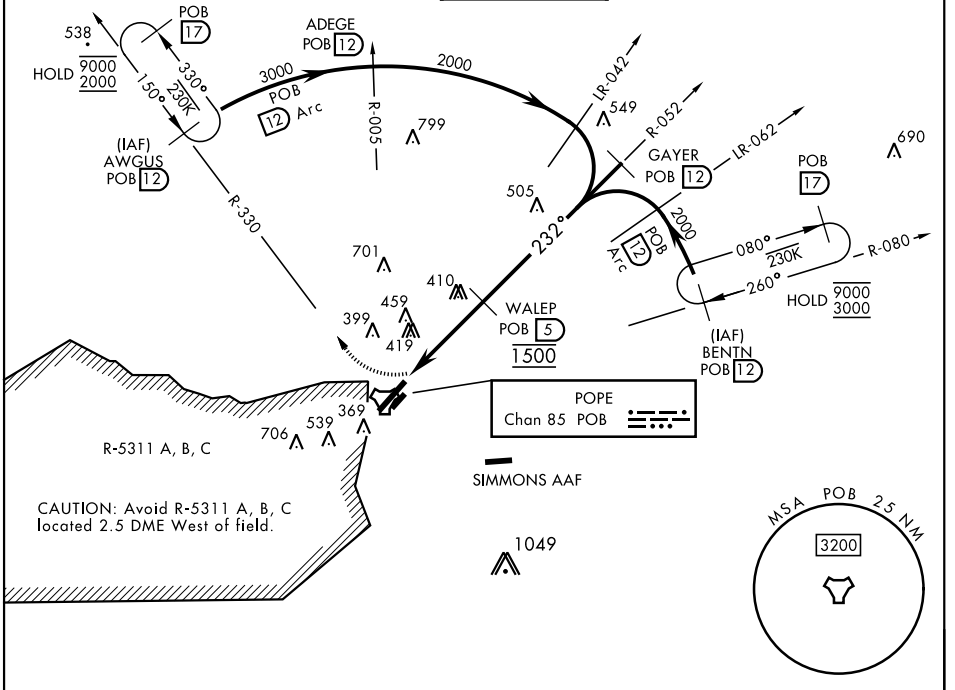
TACAN Chan 85	APCH CRS 232°	Rwy ldg TDZE Arprt Elev	7501 200 225
-------------------------	-------------------------	-------------------------------	---

[USAF]

POPE AAF (KPOB)

RADAR required	ALSF-1 	MISSED APPROACH: Climbing right turn to 2000 direct AWGUS and hold.
<p>▼ * When ALS inop, increase CAT AB RVR to 55 and vis to 1 mile; CAT CD vis to 1 3/8 miles.</p> <p>** Circling not authorized SE of Rwy 5-23.</p>		

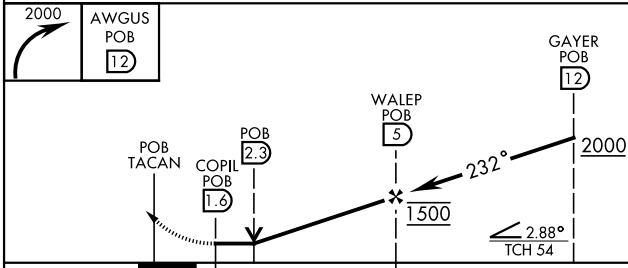
ATIS 132.3 353.725	FAYETTEVILLE APP CON 125.175 285.575 (271°-090°) 133.0 290.25 (091°-270°)	TOWER 135.025 291.1	GND CON 124.55 275.8	CLNC DEL 124.55 275.8
------------------------------	---	-------------------------------	--------------------------------	---------------------------------



SE-2, 11 JUL 2024 to 08 AUG 2024

SE-2, 11 JUL 2024 to 08 AUG 2024

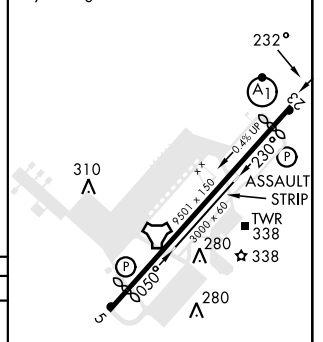
EMERG SAFE ALT 100 NM 5300



ELEV	225	TDZE	200
------	-----	------	-----

Rwy 05 ldg 7501'
Rwy 23 ldg 7501'

CATEGORY	A	B	C	D
S-23 *	760/24 560 (600-1/2)		760/60 560 (600-1 1/2)	
CIRCLING **	760-1 542 (600-1)		920-2 702 (800-2)	1060-2 3/4 842 (900-2 3/4)



HIRL Rwy 5-23
LURL Rwy 050°-230°
REL Rwy 5

TACAN RWY 23