

TACAN-A

TACAN POB Chan 85	APCH CRS 360°	Rwy ldg TDZE Arprt Elev	N/A N/A 225
-----------------------------	-------------------------	-------------------------------	--

[USAF]

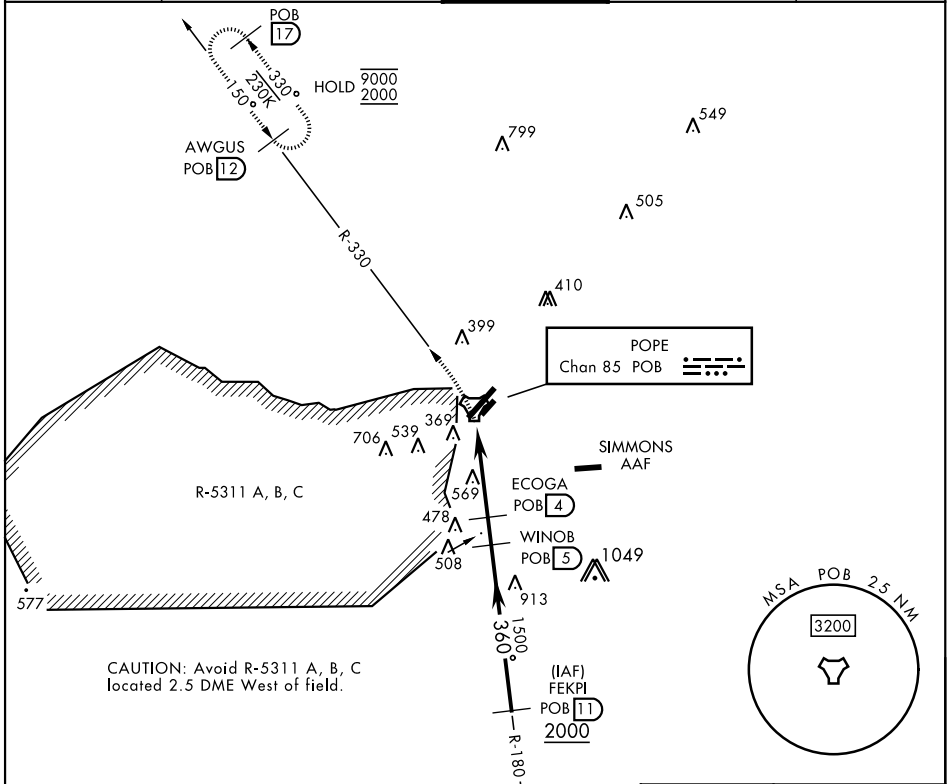
POPE AAF (KPOB)

RADAR required

▼ * Circling not authorized SE of Rwy 5-23.

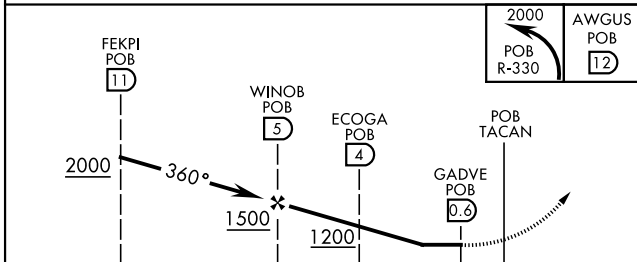
MISSED APPROACH: Climbing left turn to 2000 via POB R-330 to AWGUS and hold.

ATIS 132.3 353.725	FAYETTEVILLE APP CON 125.175 285.575 (271°-090°) 133.0 290.25 (091°-270°)	TOWER 135.025 291.1	GND CON 124.55 275.8	CLNC DEL 124.55 275.8
------------------------------	---	-------------------------------	--------------------------------	---------------------------------

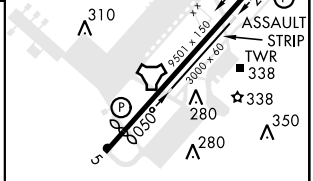


CAUTION: Avoid R-5311 A, B, C located 2.5 DME West of field.

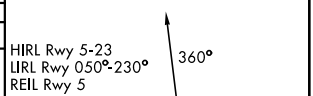
EMERG SAFE ALT 100 NM 5300



ELEV	225
Rwy 05 ldg	7501'
Rwy 23 ldg	7501'



CATEGORY	A	B	C	D
CIRCLING *	840-1	622 (700-1)	920-2 702 (800-2)	1060-2¾ 842 (900-2¾)



TACAN-A

SE-2, 11 JUL 2024 to 08 AUG 2024

SE-2, 11 JUL 2024 to 08 AUG 2024